

For Research Use Only

# ADAM17 Recombinant antibody, PBS Only (Capture)

Catalog Number:84292-3-PBS



## Basic Information

<b>Catalog Number:</b> 84292-3-PBS	<b>GenBank Accession Number:</b> BC136783	<b>Purification Method:</b> Protein A purification
<b>Size:</b> 100ug , Concentration: 1 mg/ml by Nanodrop;	<b>GeneID (NCBI):</b> 6868	<b>CloneNo.:</b> 241305E9
<b>Source:</b> Rabbit	<b>UNIPROT ID:</b> P78536	
<b>Isotype:</b> IgG	<b>Full Name:</b> ADAM metallopeptidase domain 17	
<b>Immunogen Catalog Number:</b> AG32418	<b>Calculated MW:</b> 824 aa, 93 kDa	

## Applications

**Tested Applications:**  
Cytometric bead array, Sandwich ELISA, Indirect ELISA, Sample test

**Species Specificity:**  
human

## Product Information

84292-3-PBS targets ADAM17 as part of a matched antibody pair:

MP01169-2: 84292-3-PBS capture and 84292-1-PBS detection (validated in Cytometric bead array)

MP01169-3: 84292-3-PBS capture and 84292-4-PBS detection (validated in Sandwich ELISA)

Unconjugated rabbit recombinant monoclonal antibody in PBS only (BSA and azide free) storage buffer at a concentration of 1 mg/mL, ready for conjugation. Created using Proteintech's proprietary in-house recombinant technology. Recombinant production enables unrivalled batch-to-batch consistency, easy scale-up, and future security of supply.

This conjugation ready format makes antibodies ideal for use in many applications including: ELISAs, multiplex assays requiring matched pairs, mass cytometry, and multiplex imaging applications. Antibody use should be optimized by the end user for each application and assay.

## Storage

**Storage:**  
Store at -80°C.  
**Storage Buffer:**  
PBS Only

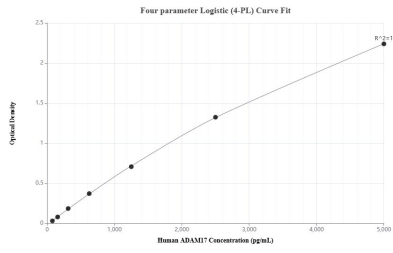
For technical support and original validation data for this product please contact:

T: 1 (888) 4PTGLAB (1-888-478-4522) (toll free in USA), or 1(312) 455-8498 (outside USA)

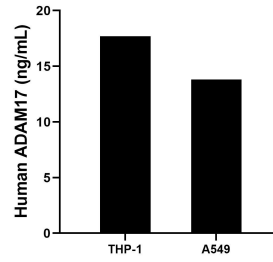
E: [proteintech@ptglab.com](mailto:proteintech@ptglab.com)  
W: [ptglab.com](http://ptglab.com)

**This product is exclusively available under Proteintech Group brand and is not available to purchase from any other manufacturer.**

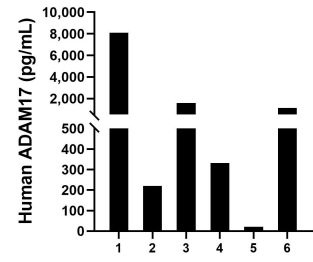
## Selected Validation Data



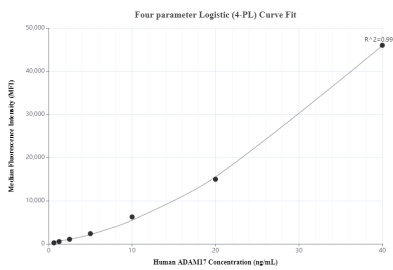
Sandwich ELISA standard curve of MP01169-3, Human ADAM17 Recombinant Matched Antibody Pair - PBS only. 84292-3-PBS was coated to a plate as the capture antibody and incubated with serial dilutions of standard Ag32418. 84292-4-PBS was HRP conjugated as the detection antibody. Range: 78.1-5000 pg/mL



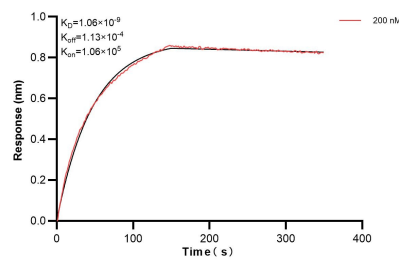
The mean ADAM17 concentration was determined to be 18.51 ng/mL in THP-1 cell extract based on a 4.4 mg/mL extract load and 13.76 ng/mL in A549 cell extract based on a 2.7 mg/mL extract load.



Serum of six individual healthy human donors was measured. The human ADAM17 concentration of detected samples was determined to be 1,898.9 pg/mL with a range of 21.5 - 8,096.2 ng/mL



Cytometric bead array standard curve of MP01169-2, ADAM17 Recombinant Matched Antibody Pair, PBS Only. Capture antibody: 84292-3-PBS. Detection antibody: 84292-1-PBS. Standard: Ag32418. Range: 0.625-40 ng/mL



Biolayer interferometry (BLI) kinetic assay of 84292-3-PBS against Human ADAM17 was performed. The affinity constant is 1.06 nM.