

For Research Use Only

MLPH Recombinant antibody

Catalog Number: 84282-1-RR



Basic Information

Catalog Number: 84282-1-RR	GenBank Accession Number: BC001653	Purification Method: Protein A purification
Size: 100ul , Concentration: 1000 µg/ml by Nanodrop;	GeneID (NCBI): 79083	CloneNo.: 241621G4
Source: Rabbit	UNIPROT ID: Q9BV36	Recommended Dilutions: WB 1:2000-1:10000 IHC 1:200-1:800
Isotype: IgG	Full Name: melanophilin	
Immunogen Catalog Number: AG32931	Calculated MW: 66 kDa	
	Observed MW: 66 kDa, 80 kDa	

Applications

Tested Applications:
WB, IHC, ELISA

Species Specificity:
human

Note-IHC: suggested antigen retrieval with TE buffer pH 9.0; (*) Alternatively, antigen retrieval may be performed with citrate buffer pH 6.0

Positive Controls:

WB : A549 cells, LNCaP cells, MCF-7 cells, PC-3 cells, HT-29 cells

IHC : human skin cancer tissue,

Background Information

Melanophilin (Mlph) is a member of the exophilin subfamily of Rab effector proteins. MLPH is a modular protein, forming a ternary complex with the small Ras-related GTPase Rab27A in its GTP-bound form and the motor protein myosin Va. It regulates retention of melanosomes at the peripheral actin cytoskeleton of melanocytes, a process essential for normal mammalian pigmentation. Defects in MLPH are a cause of Griscelli syndrome type 3 (GS3), which is characterized by a silver-gray hair color and abnormal pigment distribution in the hair shaft.

Storage

Storage:

Store at -20°C. Stable for one year after shipment.

Storage Buffer:

PBS with 0.02% sodium azide and 50% glycerol pH 7.3.

Aliquoting is unnecessary for -20°C storage

***** 20ul sizes contain 0.1% BSA**

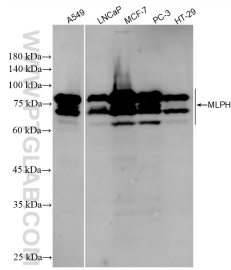
For technical support and original validation data for this product please contact:

T: 1 (888) 4PTGLAB (1-888-478-4522) (toll free in USA), or 1(312) 455-8498 (outside USA)

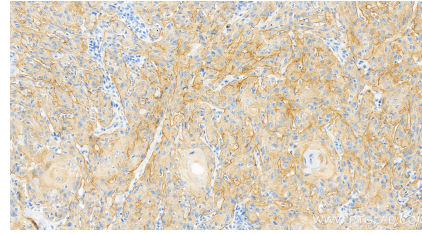
E: proteintech@ptglab.com
W: ptglab.com

This product is exclusively available under Proteintech Group brand and is not available to purchase from any other manufacturer.

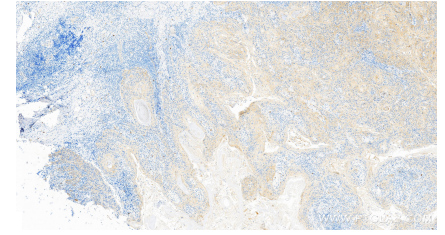
Selected Validation Data



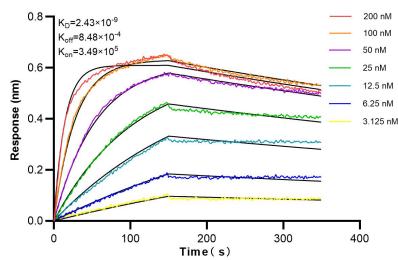
Various lysates were subjected to SDS PAGE followed by western blot with 84282-1-RR (MLPH antibody) at dilution of 1:5000 incubated at room temperature for 1.5 hours.



Immunohistochemical analysis of paraffin-embedded human skin cancer tissue slide using 84282-1-RR (MLPH antibody) at dilution of 1:400 (under 40x lens). Heat mediated antigen retrieval with Tris-EDTA buffer (pH 9.0).



Immunohistochemical analysis of paraffin-embedded human skin cancer tissue slide using 84282-1-RR (MLPH antibody) at dilution of 1:400 (under 10x lens). Heat mediated antigen retrieval with Tris-EDTA buffer (pH 9.0).



Bilayer interferometry (BLI) kinetic assays of 84282-1-RR against Human MLPH were performed. The affinity constant is 2.43 nM.