

For Research Use Only

# PFKM Recombinant antibody, PBS Only (Detector)

Catalog Number: 84281-5-PBS



## Basic Information

<b>Catalog Number:</b> 84281-5-PBS	<b>GenBank Accession Number:</b> BC021203	<b>Purification Method:</b> Protein A purification
<b>Size:</b> 100ug, Concentration: 1 mg/ml by Nanodrop;	<b>GeneID (NCBI):</b> 5213	<b>CloneNo.:</b> 241598B2
<b>Source:</b> Rabbit	<b>UNIPROT ID:</b> P08237	
<b>Isotype:</b> IgG	<b>Full Name:</b> phosphofructokinase, muscle	
<b>Immunogen Catalog Number:</b> AG30840	<b>Observed MW:</b> 75-85 kDa	

## Applications

**Tested Applications:**  
WB, IHC, IF/ICC, Cytometric bead array, Indirect ELISA

**Species Specificity:**  
human, mouse

## Product Information

84281-5-PBS targets PFKM as part of a matched antibody pair:

MP01204-3: 84281-4-PBS capture and 84281-5-PBS detection (validated in Cytometric bead array)

Unconjugated rabbit recombinant monoclonal antibody in PBS only (BSA and azide free) storage buffer at a concentration of 1 mg/mL, ready for conjugation. Created using Proteintech's proprietary in-house recombinant technology. Recombinant production enables unrivalled batch-to-batch consistency, easy scale-up, and future security of supply.

This conjugation ready format makes antibodies ideal for use in many applications including: ELISAs, multiplex assays requiring matched pairs, mass cytometry, and multiplex imaging applications. Antibody use should be optimized by the end user for each application and assay.

## Background Information

PFKM, also named as GSD7, PFK-1, PFK-M and PFKX, belongs to the phosphofructokinase family and two domains subfamily. PFKM catalyzes the reaction: ATP + D-fructose 6-phosphate = ADP + D-fructose 1,6-bisphosphate. It is a key regulatory enzyme in glycolysis. Defects in PFKM cause glycogen storage disease type 7 (GSD7). PFKM has three isoforms with molecular weights of 85, 82, and 93 kDa.

## Storage

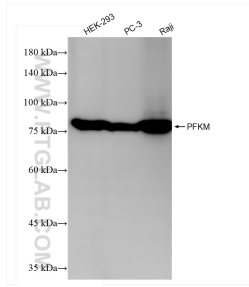
**Storage:**  
Store at -80°C.

**Storage Buffer:**  
PBS Only

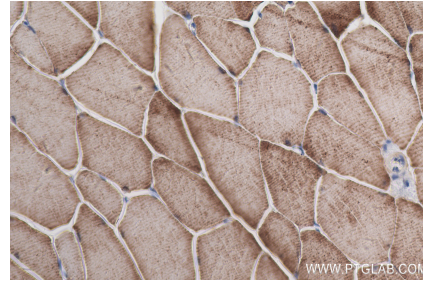
For technical support and original validation data for this product please contact:  
T: 1 (888) 4PTGLAB (1-888-478-4522) (toll free in USA), or 1(312) 455-8498 (outside USA)      E: proteintech@ptglab.com  
W: ptglab.com

**This product is exclusively available under Proteintech Group brand and is not available to purchase from any other manufacturer.**

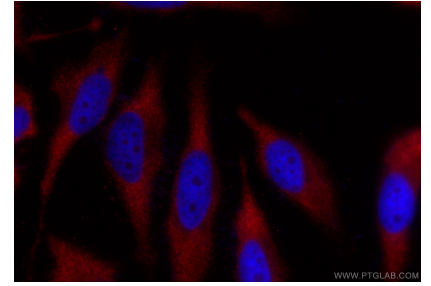
## Selected Validation Data



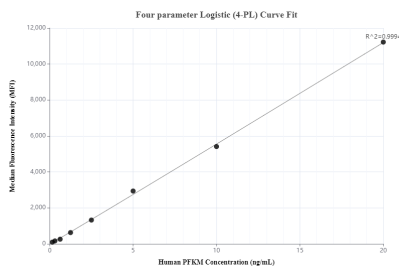
Various lysates were subjected to SDS PAGE followed by western blot with 84281-5-RR (PFKM antibody) at dilution of 1:10000 incubated at room temperature for 1.5 hours. This data was developed using the same antibody clone with 84281-5-PBS in a different storage buffer formulation.



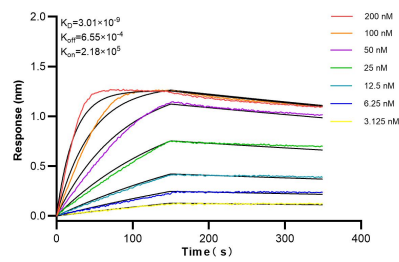
Immunohistochemical analysis of paraffin-embedded mouse skeletal muscle tissue slide using 84281-5-RR (PFKM antibody) at dilution of 1:600 (under 40x lens). Heat mediated antigen retrieval with Tris-EDTA buffer (pH 9.0). This data was developed using the same antibody clone with 84281-5-PBS in a different storage buffer formulation.



Immunofluorescent analysis of (-20°C Ethanol) fixed HeLa cells using PFKM antibody (84281-5-RR, Clone: 241598B2) at dilution of 1:500 and CoraLite®594-Conjugated Goat Anti-Rabbit IgG(H+L) (SA00013-4). This data was developed using the same antibody clone with 84281-5-PBS in a different storage buffer formulation.



Cytometric bead array standard curve of MP01204-3, PFKM Recombinant Matched Antibody Pair, PBS Only. Capture antibody: 84281-4-PBS. Detection antibody: 84281-5-PBS. Standard: Ag30840. Range: 0.156-20 ng/mL



Biolayer interferometry (BLI) kinetic assays of 84281-5-RR against Human PFKM were performed. The affinity constant is 3.01 nM.