

For Research Use Only

# FAT1 Recombinant antibody

Catalog Number: 84279-3-RR



## Basic Information

|   |   |   |
|---|---|---|
| <b>Catalog Number:</b><br>84279-3-RR                              | <b>GenBank Accession Number:</b><br>GeneID (NCBI):<br>2195          | <b>Purification Method:</b><br>Protein A purification |
| <b>Size:</b><br>100ul , Concentration: 1000 µg/ml by<br>Nanodrop; | <b>UNIPROT ID:</b><br>Q14517  | <b>CloneNo.:</b><br>241602F9                          |
| <b>Source:</b><br>Rabbit  | <b>Full Name:</b><br>FAT tumor suppressor homolog 1<br>(Drosophila) | <b>Recommended Dilutions:</b><br>WB 1:5000-1:50000    |
| <b>Isotype:</b><br>IgG  | <b>Observed MW:</b><br>506-600 kDa                                  |   |
| <b>Immunogen Catalog Number:</b><br>AG33957                       |   |   |

## Applications

|  |   |
|--|---|
| <b>Tested Applications:</b><br>WB, ELISA | <b>Positive Controls:</b><br>WB : HeLa cells, |
| <b>Species Specificity:</b><br>human     |   |

## Background Information

FAT1, also known as hFat1, belongs to a member of the cadherin superfamily, has been proposed to play roles in cerebral development, glomerular slit formation, and also to act as a tumor suppressor, but its mechanisms of action have not been elucidated. It is expected to be located in cell membrane and nucleus, which is expressed in many epithelial and some endothelial and smooth muscle cells. The calculated molecular weight of FAT1 is 506 kDa and there is glycosylation modification of the protein. To examine functions of the transmembrane and cytoplasmic domains, they were expressed in HEK-293 and HeLa cells as chimeric proteins in fusion with EGFP and extracellular domains derived from E-cadherin. Proteins comprising the transmembrane domain localized to the membrane fraction (PMID: 15922730, 26373379).

## Storage

**Storage:**  
Store at -20°C. Stable for one year after shipment.  
**Storage Buffer:**  
PBS with 0.02% sodium azide and 50% glycerol pH 7.3.  
Aliquoting is unnecessary for -20°C storage

\*\*\* 20ul sizes contain 0.1% BSA

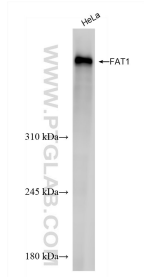
For technical support and original validation data for this product please contact:

T: 1 (888) 4PTGLAB (1-888-478-4522) (toll free  
in USA), or 1(312) 455-8498 (outside USA)

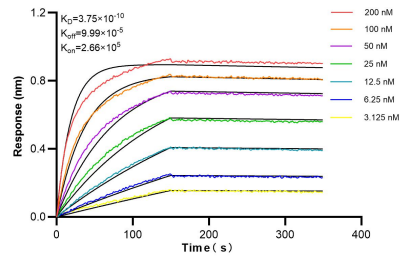
E: proteintech@ptglab.com  
W: ptglab.com

This product is exclusively available under Proteintech Group brand and is not available to purchase from any other manufacturer.

## Selected Validation Data



HeLa cells were subjected to SDS PAGE followed by western blot with 84279-3-RR (FAT1 antibody) at dilution of 1:20000 incubated at room temperature for 1.5 hours.



Biolayer interferometry (BLI) kinetic assays of 84279-3-RR against Human FAT1 were performed. The affinity constant is 0.375 nM.