

For Research Use Only

FAT1 Recombinant antibody, PBS Only (Detector)

Catalog Number: 84279-3-PBS



Basic Information

Catalog Number: 84279-3-PBS	GenBank Accession Number: GeneID (NCBI): 2195	Purification Method: Protein A purification
Size: 100ug , Concentration: 1 mg/ml by Nanodrop;	UNIPROT ID: Q14517	CloneNo.: 241602F9
Source: Rabbit	Full Name: FAT tumor suppressor homolog 1 (Drosophila)	
Isotype: IgG	Observed MW: 506-600 kDa	
Immunogen Catalog Number: AG33957		

Applications

Tested Applications:
WB, Cytometric bead array, Indirect ELISA

Species Specificity:
human

Product Information

84279-3-PBS targets FAT1 as part of a matched antibody pair:

MP01192-3: 84279-4-PBS capture and 84279-3-PBS detection (validated in Cytometric bead array)

Unconjugated rabbit recombinant monoclonal antibody in PBS only (BSA and azide free) storage buffer at a concentration of 1 mg/mL, ready for conjugation. Created using Proteintech's proprietary in-house recombinant technology. Recombinant production enables unrivalled batch-to-batch consistency, easy scale-up, and future security of supply.

This conjugation ready format makes antibodies ideal for use in many applications including: ELISAs, multiplex assays requiring matched pairs, mass cytometry, and multiplex imaging applications. Antibody use should be optimized by the end user for each application and assay.

Background Information

FAT1, also known as hFat1, belongs to a member of the cadherin superfamily, has been proposed to play roles in cerebral development, glomerular slit formation, and also to act as a tumor suppressor, but its mechanisms of action have not been elucidated. It is expected to be located in cell membrane and nucleus, which is expressed in many epithelial and some endothelial and smooth muscle cells. The calculated molecular weight of FAT1 is 506 kDa and there is glycosylation modification of the protein. To examine functions of the transmembrane and cytoplasmic domains, they were expressed in HEK-293 and HeLa cells as chimeric proteins in fusion with EGFP and extracellular domains derived from E-cadherin. Proteins comprising the transmembrane domain localized to the membrane fraction (PMID: 15922730, 26373379).

Storage

Storage:
Store at -80°C.
Storage Buffer:
PBS Only

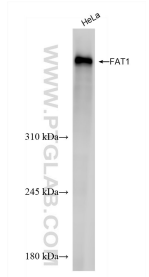
For technical support and original validation data for this product please contact:

T: 1 (888) 4PTGLAB (1-888-478-4522) (toll free in USA), or 1(312) 455-8498 (outside USA)

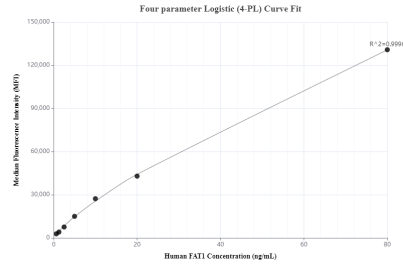
E: proteintech@ptglab.com
W: ptglab.com

This product is exclusively available under Proteintech Group brand and is not available to purchase from any other manufacturer.

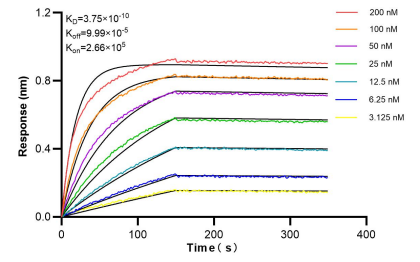
Selected Validation Data



HeLa cells were subjected to SDS PAGE followed by western blot with 84279-3-RR (FAT1 antibody) at dilution of 1:20000 incubated at room temperature for 1.5 hours. This data was developed using the same antibody clone with 84279-3-PBS in a different storage buffer formulation.



Cytometric bead array standard curve of MP01192-3, FAT1 Recombinant Matched Antibody Pair, PBS Only. Capture antibody: 84279-4-PBS. Detection antibody: 84279-3-PBS. Standard: Ag33957. Range: 0.625-80 ng/mL.



Bi-layer interferometry (BLI) kinetic assays of 84279-3-RR against Human FAT1 were performed. The affinity constant is 0.375 nM.