

For Research Use Only

CPS1 Recombinant antibody

Catalog Number: 84277-1-RR



Basic Information

Catalog Number: 84277-1-RR	GenBank Accession Number: BC140943	Purification Method: Protein A purification
Size: 100ul , Concentration: 250 µg/ml by Nanodrop;	GeneID (NCBI): 1373	CloneNo.: 241198F1
Source: Rabbit	UNIPROT ID: P31327	Recommended Dilutions: WB 1:500-1:2000 IHC 1:200-1:800 IF/ICC 1:200-1:800
Isotype: IgG	Full Name: carbamoyl-phosphate synthetase 1, mitochondrial	
	Calculated MW: 165 kDa	
	Observed MW: 140-165 kDa	

Applications

Tested Applications:
WB, IHC, IF/ICC, ELISA

Species Specificity:
human, mouse, rat

Note-IHC: suggested antigen retrieval with TE buffer pH 9.0; (*) Alternatively, antigen retrieval may be performed with citrate buffer pH 6.0

Positive Controls:

WB : HeLa cells, mouse liver tissue, rat liver tissue

IHC : mouse liver tissue,

IF/ICC : HepG2 cells,

Background Information

Carbamoyl phosphate synthetase 1 (CPS1) is the first rate-limiting enzyme in the urea cycle, converting ammonium into carbamoyl phosphate, and plays an intricate role in arginine metabolism and pyrimidine metabolism (PMID: 28376202). CPS1 expression is liver specific and suppressed in HCC cells and tumor tissues at the transcriptional level (PMID: 21281797). CPS1 gene comprises 38 exons that encode a polypeptide of 1500 amino acids and has a molecular weight of 165 kDa.

Storage

Storage:
Store at -20°C. Stable for one year after shipment.
Storage Buffer:
PBS with 0.02% sodium azide and 50% glycerol pH 7.3.
Aliquoting is unnecessary for -20°C storage

***** 20ul sizes contain 0.1% BSA**

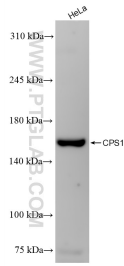
For technical support and original validation data for this product please contact:

T: 1 (888) 4PTGLAB (1-888-478-4522) (toll free in USA), or 1(312) 455-8498 (outside USA)

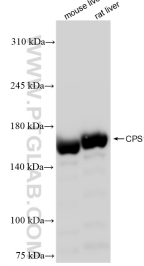
E: proteintech@ptglab.com
W: ptglab.com

This product is exclusively available under Proteintech Group brand and is not available to purchase from any other manufacturer.

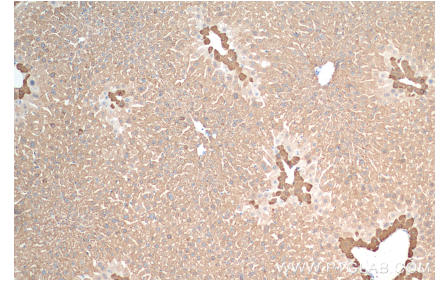
Selected Validation Data



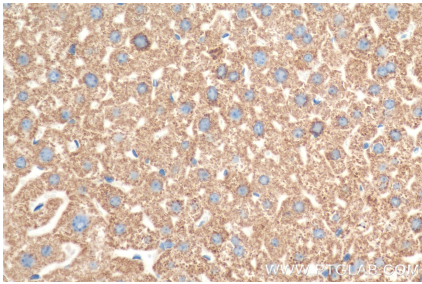
HeLa cells were subjected to SDS PAGE followed by western blot with 84277-1-RR (CPS1 antibody) at dilution of 1:1000 incubated at room temperature for 1.5 hours.



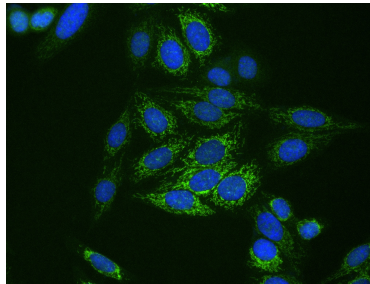
Various lysates were subjected to SDS PAGE followed by western blot with 84277-1-RR (CPS1 antibody) at dilution of 1:1000 incubated at room temperature for 1.5 hours.



Immunohistochemical analysis of paraffin-embedded mouse liver tissue slide using 84277-1-RR (CPS1 antibody) at dilution of 1:400 (under 10x lens). Heat mediated antigen retrieval with Tris-EDTA buffer (pH 9.0).



Immunohistochemical analysis of paraffin-embedded mouse liver tissue slide using 84277-1-RR (CPS1 antibody) at dilution of 1:400 (under 40x lens). Heat mediated antigen retrieval with Tris-EDTA buffer (pH 9.0).



Immunofluorescent analysis of (4% PFA) fixed HepG2 cells using CPS1 antibody (84277-1-RR, Clone: 241198F1) at dilution of 1:400 and CoraLite® 488-Conjugated Goat Anti-Rabbit IgG(H+L) (SA00013-2).