

For Research Use Only

# ZNF217 Recombinant antibody

Catalog Number: 84276-1-RR



## Basic Information

<b>Catalog Number:</b> 84276-1-RR	<b>GenBank Accession Number:</b> BC113427	<b>Purification Method:</b> Protein A purification
<b>Size:</b> 100ul , Concentration: 1000 µg/ml by Nanodrop;	<b>GeneID (NCBI):</b> 7764	<b>CloneNo.:</b> 241217E3
<b>Source:</b> Rabbit	<b>UNIPROT ID:</b> O75362	<b>Recommended Dilutions:</b> WB 1:1000-1:4000 IF/ICC 1:125-1:500
<b>Isotype:</b> IgG	<b>Full Name:</b> zinc finger protein 217	
<b>Immunogen Catalog Number:</b> AG19453	<b>Calculated MW:</b> 1048 aa, 115 kDa	
	<b>Observed MW:</b> ~ 130 kDa	

## Applications

<b>Tested Applications:</b> WB, IF/ICC, ELISA	<b>Positive Controls:</b> WB : HepG2 cells, LNCaP cells, Caco-2 cells, PC-3 cells
<b>Species Specificity:</b> human	<b>IF/ICC :</b> HepG2 cells,

## Background Information

Zinc finger protein 217 (ZNF217) is a member of the Krüppel-like factor transcription factor family. ZNF217 possesses a characteristic structure of zinc finger motifs and plays a crucial role in regulating the biological activities of cells. ZNF217 binds to DNA through its zinc fingers thereby targeting potential protein binding partners to specific sites in the genome. Recent findings have revealed that ZNF217 is strongly associated with multiple aspects of cancer progression, impacting patient prognosis. PMID: 38259608

## Storage

**Storage:**  
Store at -20°C. Stable for one year after shipment.  
**Storage Buffer:**  
PBS with 0.02% sodium azide and 50% glycerol pH 7.3.  
Aliquoting is unnecessary for -20°C storage

\*\*\* 20ul sizes contain 0.1% BSA

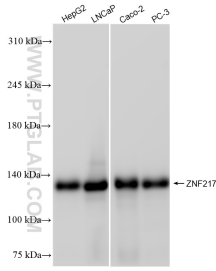
For technical support and original validation data for this product please contact:

T: 1 (888) 4PTGLAB (1-888-478-4522) (toll free in USA), or 1(312) 455-8498 (outside USA)

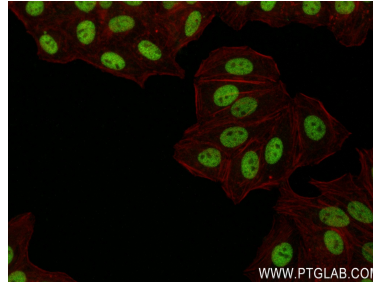
E: [proteintech@ptglab.com](mailto:proteintech@ptglab.com)  
W: [ptglab.com](http://ptglab.com)

This product is exclusively available under Proteintech Group brand and is not available to purchase from any other manufacturer.

## Selected Validation Data



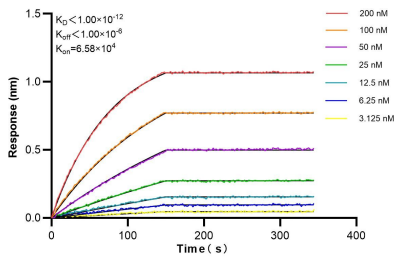
Various lysates were subjected to SDS PAGE followed by western blot with 84276-1-RR (ZNF217 antibody) at dilution of 1:2000 incubated at room temperature for 1.5 hours.



Immunofluorescent analysis of (4% PFA) fixed HepG2 cells using ZNF217 antibody (84276-1-RR, Clone: 241217E3) at dilution of 1:250 and CoraLite®488-Conjugated AffiniPure Goat Anti-Rabbit IgG(H+L) (SA00013-2), CL594-Phalloidin (red).



Immunofluorescent analysis of (4% PFA) fixed HepG2 cells using ZNF217 antibody (84276-1-RR, Clone: 241217E3) at dilution of 1:250 and CoraLite®488-Conjugated AffiniPure Goat Anti-Rabbit IgG(H+L) (SA00013-2), CL594-Phalloidin (red).



Bi-layer interferometry (BLI) kinetic assays of 84276-1-RR against Human ZNF217 were performed. The affinity constant is below 1 pM.