

For Research Use Only

# Rat IL-1 beta Recombinant antibody, PBS Only (Detector)

Catalog Number: 84274-1-PBS



## Basic Information

<b>Catalog Number:</b> 84274-1-PBS	<b>GenBank Accession Number:</b> NM_031512	<b>Purification Method:</b> Protein A purification
<b>Size:</b> 100ug , Concentration: 1 mg/ml by Nanodrop;	<b>GeneID (NCBI):</b> 24494	<b>CloneNo.:</b> 241001H8
<b>Source:</b> Rabbit	<b>UNIPROT ID:</b> Q63264	
<b>Isotype:</b> IgG	<b>Full Name:</b> interleukin 1 beta	
	<b>Calculated MW:</b> 31 kDa	
	<b>Observed MW:</b> 31 kDa	

## Applications

**Tested Applications:**  
WB, Cytometric bead array, Indirect ELISA

**Species Specificity:**  
rat

## Product Information

84274-1-PBS targets IL-1 beta as part of a matched antibody pair:

MP01210-3: 84274-2-PBS capture and 84274-1-PBS detection (validated in Cytometric bead array)

Unconjugated rabbit recombinant monoclonal antibody in PBS only (BSA and azide free) storage buffer at a concentration of 1 mg/mL, ready for conjugation. Created using Proteintech's proprietary in-house recombinant technology. Recombinant production enables unrivalled batch-to-batch consistency, easy scale-up, and future security of supply.

This conjugation ready format makes antibodies ideal for use in many applications including: ELISAs, multiplex assays requiring matched pairs, mass cytometry, and multiplex imaging applications. Antibody use should be optimized by the end user for each application and assay.

## Background Information

Interleukin-1, produced mainly by blood monocytes, mediates the panoply of host reactions collectively known as acute phase response. It is identical to endogenous pyrogen. The multiple biologic activities that define IL1 are properties of a 15- to 18-kD protein that is derived from a 30- to 35-kD precursor. Interleukin 1 $\beta$  (IL-1 $\beta$ ) is a member of the interleukin 1 cytokine family. It is a pro-inflammatory cytokine against infection, playing an important role in the pathogenesis of cancers. It signals through various adaptor proteins and kinases that lead to activation of numerous downstream targets.

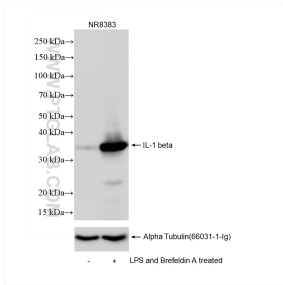
## Storage

**Storage:**  
Store at -80°C.  
**Storage Buffer:**  
PBS Only

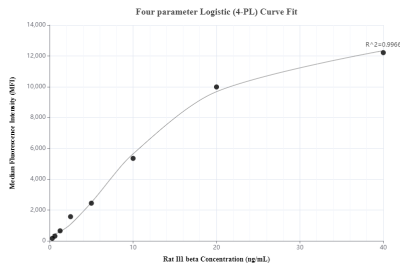
For technical support and original validation data for this product please contact:  
T: 1 (888) 4PTGLAB (1-888-478-4522) (toll free in USA), or 1(312) 455-8498 (outside USA)  
E: [proteintech@ptglab.com](mailto:proteintech@ptglab.com)  
W: [ptglab.com](http://ptglab.com)

This product is exclusively available under Proteintech Group brand and is not available to purchase from any other manufacturer.

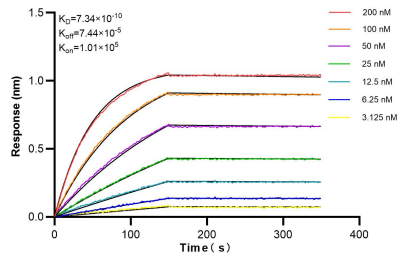
## Selected Validation Data



LPS and Brefeldin A treated NR8383 cells were subjected to SDS PAGE followed by western blot with 84274-1-RR (IL1 beta antibody) at dilution of 1:10000 incubated at room temperature for 1.5 hours. This data was developed using the same antibody clone with 84274-1-PBS in a different storage buffer formulation.



Cytometric bead array standard curve of MP01210-3, RAT IL-1 beta Recombinant Matched Antibody Pair, PBS Only. Capture antibody: 84274-2-PBS. Detection antibody: 84274-1-PBS. Standard: Eg31371. Range: 0.313-40 ng/mL.



Biolayer interferometry (BLI) kinetic assays of 84274-1-RR against Rat IL1 beta were performed. The affinity constant is 0.734 nM.