

For Research Use Only

CD72 Recombinant antibody, PBS Only (Detector)

Catalog Number: 84270-1-PBS



Basic Information

Catalog Number: 84270-1-PBS	GenBank Accession Number: BC030227	Purification Method: Protein A purification
Size: 100ug, Concentration: 1 mg/ml by Nanodrop;	GeneID (NCBI): 971	CloneNo.: 241300A6
Source: Rabbit	UNIPROT ID: P21854	
Isotype: IgG	Full Name: CD72 molecule	
	Calculated MW: 359 aa, 40 kDa	

Applications

Tested Applications:
Cytometric bead array, Sandwich ELISA, Indirect ELISA,
Sample test

Species Specificity:
human

Product Information

84270-1-PBS targets CD72 as part of a matched antibody pair:

MP01170-2: 84270-4-PBS capture and 84270-1-PBS detection (validated in Cytometric bead array, Sandwich ELISA)

Unconjugated rabbit recombinant monoclonal antibody in PBS only (BSA and azide free) storage buffer at a concentration of 1 mg/mL, ready for conjugation. Created using Proteintech's proprietary in-house recombinant technology. Recombinant production enables unrivalled batch-to-batch consistency, easy scale-up, and future security of supply.

This conjugation ready format makes antibodies ideal for use in many applications including: ELISAs, multiplex assays requiring matched pairs, mass cytometry, and multiplex imaging applications. Antibody use should be optimized by the end user for each application and assay.

Storage

Storage:
Store at -80°C.
Storage Buffer:
PBS Only

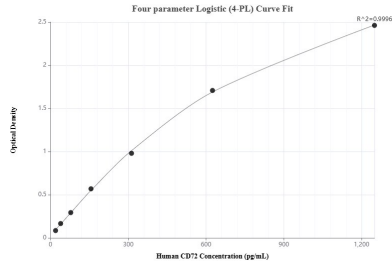
For technical support and original validation data for this product please contact:

T: 1 (888) 4PTGLAB (1-888-478-4522) (toll free
in USA), or 1(312) 455-8498 (outside USA)

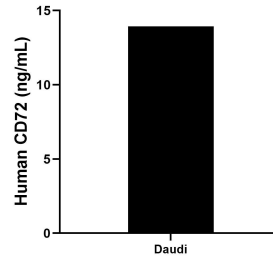
E: proteintech@ptglab.com
W: ptglab.com

This product is exclusively available under Proteintech Group brand and is not available to purchase from any other manufacturer.

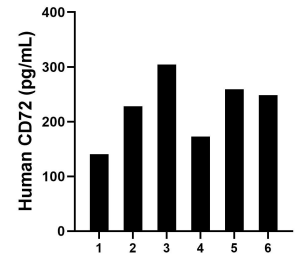
Selected Validation Data



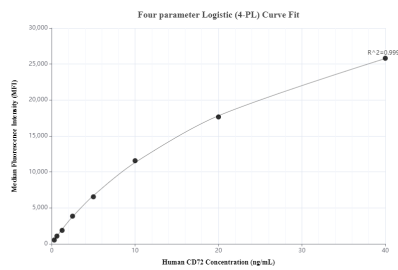
Sandwich ELISA standard curve of MP01170-2, Human CD72 Recombinant Matched Antibody Pair - PBS only. 84270-4-PBS was coated to a plate as the capture antibody and incubated with serial dilutions of standard RP02318. 84270-1-PBS was HRP conjugated as the detection antibody. Range: 19.5-1250 pg/mL



The mean CD72 concentration was determined to be 13.98 ng/mL in Daudi cell extract based on a 1.8 mg/mL extract load.



Serum of six individual healthy human donors was measured. The human CD72 concentration of detected samples was determined to be 225.64 pg/mL with a range of 140.7 - 304.5 pg/mL.



Cytometric bead array standard curve of MP01170-2, CD72 Recombinant Matched Antibody Pair, PBS Only. Capture antibody: 84270-4-PBS. Detection antibody: 84270-1-PBS. Standard: RP02318. Range: 0.313-40 ng/mL