

For Research Use Only

IL-1R2 Recombinant antibody, PBS Only (Capture/Detector)

Catalog Number: 84269-1-PBS



Basic Information

Catalog Number:

84269-1-PBS

Size:

100ug, Concentration: 1 mg/ml by
Nanodrop;

Source:

Rabbit

Isotype:

IgG

GenBank Accession Number:

BC039031

GeneID (NCBI):

7850

UNIPROT ID:

P27930

Full Name:

interleukin 1 receptor, type II

Calculated MW:

398 aa, 45 kDa

Purification Method:

Protein A purification

CloneNo.:

241530B4

Applications

Tested Applications:

Cytometric bead array, Sandwich ELISA, Indirect ELISA,
Sample test

Species Specificity:

human

Product Information

84269-1-PBS targets IL-1R2 as part of a matched antibody pair:

MP01178-2: 84269-4-PBS capture and 84269-1-PBS detection (validated in Cytometric bead array)

MP01178-3: 84269-1-PBS capture and 84269-3-PBS detection (validated in Cytometric bead array)

MP01178-4: 84269-1-PBS capture and 84269-4-PBS detection (validated in Sandwich ELISA)

Unconjugated rabbit recombinant monoclonal antibody in PBS only (BSA and azide free) storage buffer at a concentration of 1 mg/mL, ready for conjugation. Created using Proteintech's proprietary in-house recombinant technology. Recombinant production enables unrivalled batch-to-batch consistency, easy scale-up, and future security of supply.

This conjugation ready format makes antibodies ideal for use in many applications including: ELISAs, multiplex assays requiring matched pairs, mass cytometry, and multiplex imaging applications. Antibody use should be optimized by the end user for each application and assay.

Storage

Storage:

Store at -80°C.

Storage Buffer:

PBS Only

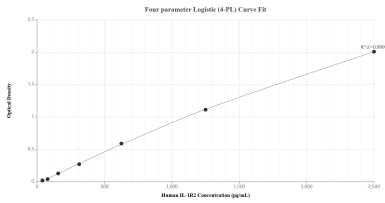
For technical support and original validation data for this product please contact:

T: 1 (888) 4PTGLAB (1-888-478-4522) (toll free
in USA), or 1(312) 455-8498 (outside USA)

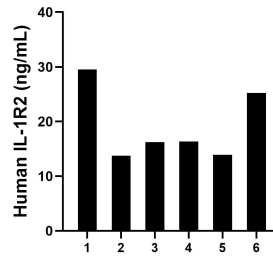
E: proteintech@ptglab.com
W: ptglab.com

This product is exclusively available under Proteintech Group brand and is not available to purchase from any other manufacturer.

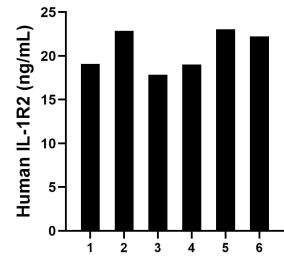
Selected Validation Data



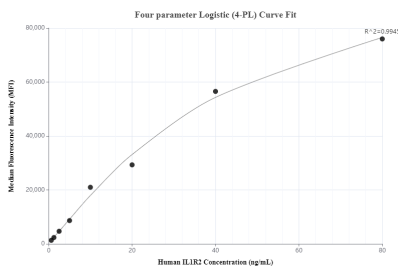
Sandwich ELISA standard curve of MP01178-4, Human IL-1R2 Recombinant Matched Antibody Pair - PBS only. 84269-1-PBS was coated to a plate as the capture antibody and incubated with serial dilutions of standard Eg0118. 84269-4-PBS was HRP conjugated as the detection antibody. Range: 39.1-2500 pg/mL



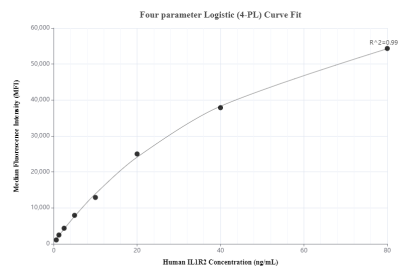
Plasma of six individual healthy human donors was measured. The IL-1R2 concentration of detected samples was determined to be 19.2 ng/mL with a range of 13.8-29.5 ng/mL.



Serum of six individual healthy human donors was measured. The IL-1R2 concentration of detected samples was determined to be 20.7 ng/mL with a range of 17.9-23.0 ng/mL.



Cytometric bead array standard curve of MP01178-2, IL-1R2 Recombinant Matched Antibody Pair, PBS Only. Capture antibody: 84269-4-PBS. Detection antibody: 84269-1-PBS. Standard: Eg0118. Range: 0.625-80 ng/mL



Cytometric bead array standard curve of MP01178-3, IL-1R2 Recombinant Matched Antibody Pair, PBS Only. Capture antibody: 84269-1-PBS. Detection antibody: 84269-3-PBS. Standard: Eg0118. Range: 0.625-80 ng/mL