

For Research Use Only

IVNS1ABP Recombinant antibody, PBS Only (Capture)

Catalog Number: 84268-2-PBS



Basic Information

Catalog Number: 84268-2-PBS	GenBank Accession Number: BC067739	Purification Method: Protein A purification
Size: 100ug , Concentration: 1 mg/ml by Nanodrop;	GeneID (NCBI): 10625	CloneNo.: 241587H4
Source: Rabbit	UNIPROT ID: Q9Y6Y0	
Isotype: IgG	Full Name: influenza virus NS1A binding protein	
Immunogen Catalog Number: AG6412	Calculated MW: 72 kDa	

Applications

Tested Applications:
Cytometric bead array, Sandwich ELISA, Indirect ELISA, Sample test

Species Specificity:
human

Product Information

84268-2-PBS targets IVNS1ABP as part of a matched antibody pair:

MP01182-2: 84268-2-PBS capture and 84268-1-PBS detection (validated in Cytometric bead array)

MP01182-3: 84268-2-PBS capture and 84268-3-PBS detection (validated in Cytometric bead array, Sandwich ELISA)

Unconjugated rabbit recombinant monoclonal antibody in PBS only (BSA and azide free) storage buffer at a concentration of 1 mg/mL, ready for conjugation. Created using Proteintech's proprietary in-house recombinant technology. Recombinant production enables unrivalled batch-to-batch consistency, easy scale-up, and future security of supply.

This conjugation ready format makes antibodies ideal for use in many applications including: ELISAs, multiplex assays requiring matched pairs, mass cytometry, and multiplex imaging applications. Antibody use should be optimized by the end user for each application and assay.

Storage

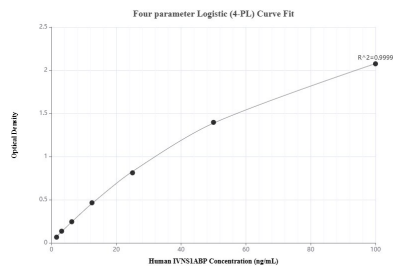
Storage:
Store at -80°C.

Storage Buffer:
PBS Only

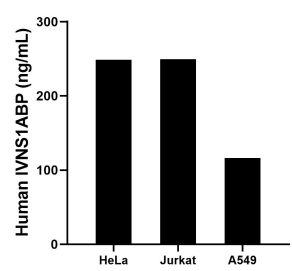
For technical support and original validation data for this product please contact:
T: 1 (888) 4PTGLAB (1-888-478-4522) (toll free in USA), or 1(312) 455-8498 (outside USA)
E: proteintech@ptglab.com
W: ptglab.com

This product is exclusively available under Proteintech Group brand and is not available to purchase from any other manufacturer.

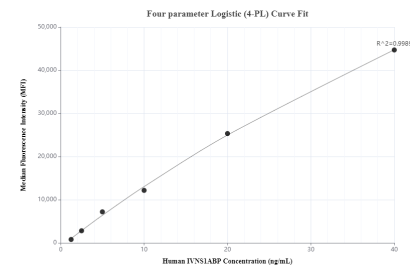
Selected Validation Data



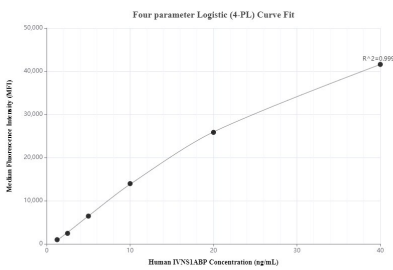
Sandwich ELISA standard curve of MP01182-3, Human IVNS1ABP Recombinant Matched Antibody Pair - PBS only. 84268-2-PBS was coated to a plate as the capture antibody and incubated with serial dilutions of standard Ag6412. 84268-3-PBS was HRP conjugated as the detection antibody. Range: 1.56-100 ng/mL



The mean IVNS1ABP concentration was determined to be 248.61 ng/mL in HeLa cell extract based on a 1.0 mg/mL extract load, 249.24 ng/mL in Jurkat cell extract based on a 1.5 mg/mL extract load and 116.37 ng/mL in A549 cell extract based on a 2.6 mg/mL extract load.



Cytometric bead array standard curve of MP01182-2, IVNS1ABP Recombinant Matched Antibody Pair, PBS Only. Capture antibody: 84268-2-PBS. Detection antibody: 84268-1-PBS. Standard: Ag6412. Range: 1.25-40 ng/mL



Cytometric bead array standard curve of MP01182-3, IVNS1ABP Recombinant Matched Antibody Pair, PBS Only. Capture antibody: 84268-2-PBS. Detection antibody: 84268-3-PBS. Standard: Ag6412. Range: 1.25-40 ng/mL