

For Research Use Only

# CD22 Recombinant antibody, PBS Only (Capture)

Catalog Number: 84265-4-PBS



## Basic Information

<b>Catalog Number:</b> 84265-4-PBS	<b>GenBank Accession Number:</b> BC109306	<b>Purification Method:</b> Protein A purification
<b>Size:</b> 100ug, Concentration: 1 mg/ml by Nanodrop;	<b>GeneID (NCBI):</b> 933	<b>CloneNo.:</b> 241314E9
<b>Source:</b> Rabbit	<b>UNIPROT ID:</b> P20273	
<b>Isotype:</b> IgG	<b>Full Name:</b> CD22 molecule	
	<b>Calculated MW:</b> 847 aa, 95 kDa	

## Applications

**Tested Applications:**  
Cytometric bead array, Sandwich ELISA, Indirect ELISA,  
Sample test

**Species Specificity:**  
human

## Product Information

84265-4-PBS targets CD22 as part of a matched antibody pair:  
MP01173-3: 84265-4-PBS capture and 84265-2-PBS detection (validated in Cytometric bead array, Sandwich ELISA)

Unconjugated rabbit recombinant monoclonal antibody in PBS only (BSA and azide free) storage buffer at a concentration of 1 mg/mL, ready for conjugation. Created using Proteintech's proprietary in-house recombinant technology. Recombinant production enables unrivalled batch-to-batch consistency, easy scale-up, and future security of supply.

This conjugation ready format makes antibodies ideal for use in many applications including: ELISAs, multiplex assays requiring matched pairs, mass cytometry, and multiplex imaging applications. Antibody use should be optimized by the end user for each application and assay.

## Storage

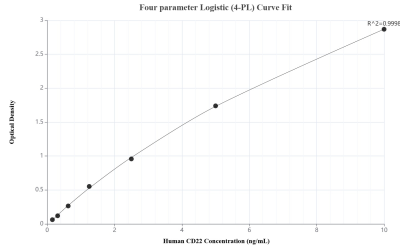
**Storage:**  
Store at -80°C.

**Storage Buffer:**  
PBS Only

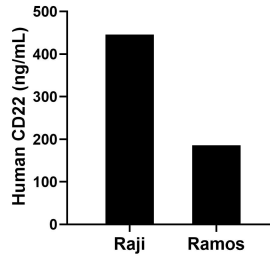
For technical support and original validation data for this product please contact:  
T: 1 (888) 4PTGLAB (1-888-478-4522) (toll free in USA), or 1(312) 455-8498 (outside USA)      E: [proteintech@ptglab.com](mailto:proteintech@ptglab.com)  
W: [ptglab.com](http://ptglab.com)

**This product is exclusively available under Proteintech Group brand and is not available to purchase from any other manufacturer.**

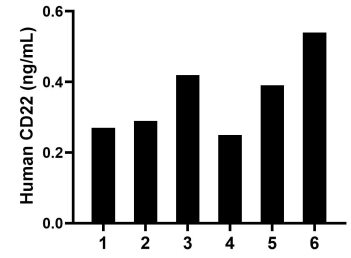
## Selected Validation Data



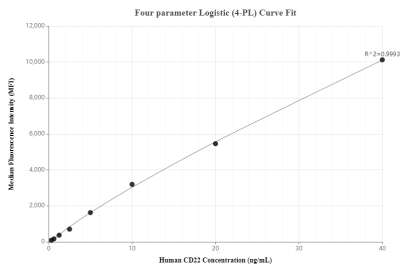
Sandwich ELISA standard curve of MP01173-3, Human CD22 Recombinant Matched Antibody Pair - PBS only. 84265-4-PBS was coated to a plate as the capture antibody and incubated with serial dilutions of standard RP02324, 84265-2-PBS was HRP conjugated as the detection antibody. Range: 0.156-10 ng/mL



The mean CD22 concentration was determined to be 445.39 ng/mL in Raji cell extract based on a 3.00 mg/mL extract load and 185.59 ng/mL in Ramos cell extract based on a 1.40 mg/mL extract load.



Serum of six individual healthy human donors was measured. The CD22 concentration of detected samples was determined to be 0.36 ng/mL with a range of 0.25-0.54 ng/mL



Cytometric bead array standard curve of MP01173-3, CD22 Recombinant Matched Antibody Pair, PBS Only. Capture antibody: 84265-4-PBS. Detection antibody: 84265-2-PBS. Standard: RP02324. Range: 0.313-40 ng/mL