

For Research Use Only

CD22 Recombinant antibody, PBS Only (Capture/Detector)

Catalog Number: 84265-2-PBS



Basic Information

Catalog Number: 84265-2-PBS	GenBank Accession Number: BC109306	Purification Method: Protein A purification
Size: 100ug, Concentration: 1 mg/ml by Nanodrop;	GeneID (NCBI): 933	CloneNo.: 241314G10
Source: Rabbit	UNIPROT ID: P20273	
Isotype: IgG	Full Name: CD22 molecule	
	Calculated MW: 847 aa, 95 kDa	
	Observed MW: 130-140 kDa	

Applications

Tested Applications:
WB, Cytometric bead array, Sandwich ELISA, Indirect ELISA, Sample test

Species Specificity:
human

Product Information

84265-2-PBS targets CD22 as part of a matched antibody pair:

MP01173-1: 84265-2-PBS capture and 84265-3-PBS detection (validated in Cytometric bead array)

MP01173-3: 84265-4-PBS capture and 84265-2-PBS detection (validated in Cytometric bead array, Sandwich ELISA)

Unconjugated rabbit recombinant monoclonal antibody in PBS only (BSA and azide free) storage buffer at a concentration of 1 mg/mL, ready for conjugation. Created using Proteintech's proprietary in-house recombinant technology. Recombinant production enables unrivalled batch-to-batch consistency, easy scale-up, and future security of supply.

This conjugation ready format makes antibodies ideal for use in many applications including: ELISAs, multiplex assays requiring matched pairs, mass cytometry, and multiplex imaging applications. Antibody use should be optimized by the end user for each application and assay.

Background Information

CD22, also known as Siglec-2 (sialic acid binding Ig-like lectin 2) or BL-CAM (B-lymphocyte cell adhesion molecule), is a 130-140 kDa, B-cell restricted, type I transmembrane glycoprotein belonging to the immunoglobulin gene superfamily. The expression of CD22 is developmentally regulated. It is expressed at low levels in the cytoplasm of pro-B and pre-B cells and present on the cell surface only at mature stages of B-cell differentiation. Cell surface expression is lost during terminal differentiation into plasma cell and after B-cell activation. CD22 is an inhibitory receptor for B-cell receptor (BCR) signalling, preferentially binds to alpha-2,6-linked sialic acid and mediates B-cell B-cell interactions. It plays a crucial role in activation and differentiation of the B-cell.

Storage

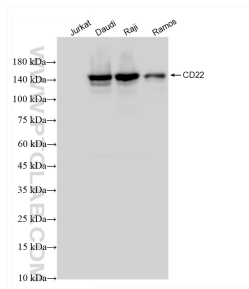
Storage:
Store at -80°C.

Storage Buffer:
PBS Only

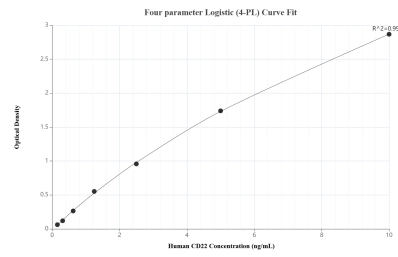
For technical support and original validation data for this product please contact:
T: 1 (888) 4PTGLAB (1-888-478-4522) (toll free in USA), or 1(312) 455-8498 (outside USA)
E: proteintech@ptglab.com
W: ptglab.com

This product is exclusively available under Proteintech Group brand and is not available to purchase from any other manufacturer.

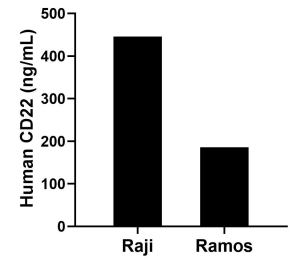
Selected Validation Data



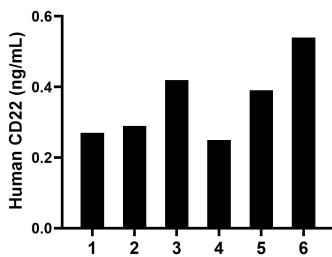
Various lysates were subjected to SDS PAGE followed by western blot with 84265-2-RR (CD22 antibody) at dilution of 1:10000 incubated at room temperature for 1.5 hours. This data was developed using the same antibody clone with 84265-2-PBS in a different storage buffer formulation.



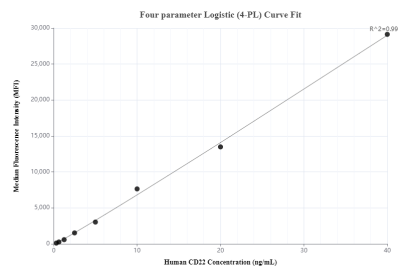
Sandwich ELISA standard curve of MP01173-3, Human CD22 Recombinant Matched Antibody Pair - PBS only. 84265-4-PBS was coated to a plate as the capture antibody and incubated with serial dilutions of standard RP02324. 84265-2-PBS was HRP conjugated as the detection antibody. Range: 0.156-10 ng/mL



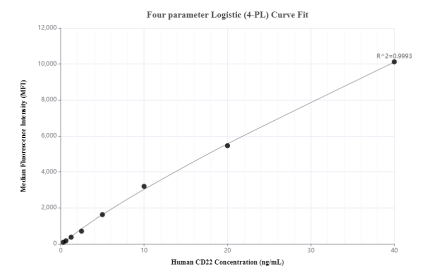
The mean CD22 concentration was determined to be 445.39 ng/mL in Raji cell extract based on a 3.00 mg/mL extract load and 185.59 ng/mL in Ramos cell extract based on a 1.40 mg/mL extract load.



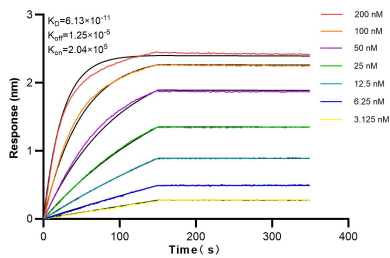
Serum of six individual healthy human donors was measured. The CD22 concentration of detected samples was determined to be 0.36 ng/mL with a range of 0.25-0.54 ng/mL



Cytometric bead array standard curve of MP01173-1, CD22 Recombinant Matched Antibody Pair, PBS Only. Capture antibody: 84265-2-PBS. Detection antibody: 84265-3-PBS. Standard: RP02324. Range: 0.313-40 ng/mL



Cytometric bead array standard curve of MP01173-3, CD22 Recombinant Matched Antibody Pair, PBS Only. Capture antibody: 84265-4-PBS. Detection antibody: 84265-2-PBS. Standard: RP02324. Range: 0.313-40 ng/mL



Biolayer interferometry (BLI) kinetic assays of 84265-2-RR against Human CD22 were performed. The affinity constant is 61.3 pM.