

For Research Use Only

# GBP2 Recombinant antibody, PBS Only

Catalog Number: 84264-6-PBS



## Basic Information

<b>Catalog Number:</b> 84264-6-PBS	<b>GenBank Accession Number:</b> BC022272	<b>Purification Method:</b> Protein A purification
<b>Size:</b> 100ug, Concentration: 1 mg/ml by Nanodrop;	<b>GeneID (NCBI):</b> 2634	<b>CloneNo.:</b> 241580C12
<b>Source:</b> Rabbit	<b>UNIPROT ID:</b> P32456	
<b>Isotype:</b> IgG	<b>Full Name:</b> guanylate binding protein 2, interferon-inducible	
<b>Immunogen Catalog Number:</b> AG2425	<b>Calculated MW:</b> 591 aa, 67 kDa	
	<b>Observed MW:</b> 67 kDa	

## Applications

**Tested Applications:**  
WB, IF/ICC, FC (Intra), Indirect ELISA

**Species Specificity:**  
human

## Background Information

GBP2 is a member of the GTPase family and is crucial to host immunity against pathogens. GBP2 is also used as a marker of interferon (IFN) responsiveness because it is one of the most highly expressed genes after IFN- $\gamma$  stimulation. Increased GBP2 expression is also associated with a better prognosis in breast cancer and may have a role in T-cell defense against breast cancer. Interestingly, GBP2 expression in NIH/3T3 fibroblasts inhibited Rac activation and matrix metalloproteinase-9 expression, suggesting a possible role for GBP2 in regulating cancer metastasis. The molecular weight of GBP2 is 67 kDa. (PMID: 29072687, 35383115)

## Storage

**Storage:**  
Store at -80°C.

**Storage Buffer:**  
PBS Only

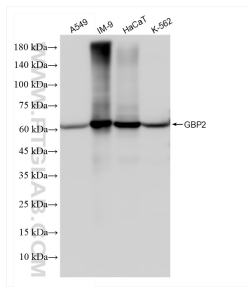
For technical support and original validation data for this product please contact:

T: 1 (888) 4PTGLAB (1-888-478-4522) (toll free in USA), or 1(312) 455-8498 (outside USA)

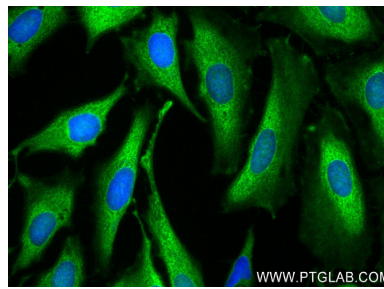
E: [proteintech@ptglab.com](mailto:proteintech@ptglab.com)  
W: [ptglab.com](http://ptglab.com)

**This product is exclusively available under Proteintech Group brand and is not available to purchase from any other manufacturer.**

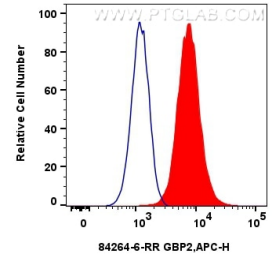
## Selected Validation Data



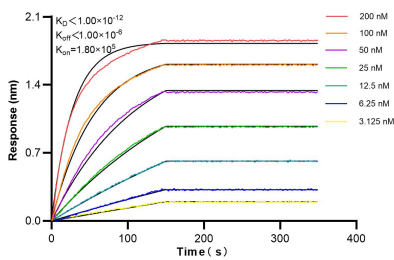
Various lysates were subjected to SDS PAGE followed by western blot with 84264-6-RR (GBP2 antibody) at dilution of 1:10000 incubated at room temperature for 1.5 hours. This data was developed using the same antibody clone with 84264-6-PBS in a different storage buffer formulation.



Immunofluorescent analysis of (-20°C Ethanol) fixed HeLa cells using GBP2 antibody (84264-6-RR, Clone: 241580C12.) at dilution of 1:250 and CoraLite®488-Conjugated Goat Anti-Rabbit IgG(H+L) (SA00013-2). This data was developed using the same antibody clone with 84264-6-PBS in a different storage buffer formulation.



1x10<sup>6</sup> A549 cells were intracellularly stained with 0.2 ug GBP2 Recombinant antibody (84264-6-RR, Clone:241580C12) and Multi-rAb CoraLite® Plus 647-Goat Anti-Rabbit Recombinant Secondary Antibody (H+L) (RGAR005)(red), or 0.2 ug Rabbit IgG Isotype Control Recombinant Antibody (98136-1-RR, Clone: 240953C9) (blue). Cells were fixed with 4% PFA and permeabilized with Flow Cytometry Perm Buffer (PF00011-C). This data was developed using the same



Biolayer interferometry (BLI) kinetic assays of 84264-6-RR against Human GBP2 were performed. The affinity constant is below 1 pM.