

For Research Use Only

GBP2 Recombinant antibody, PBS Only (Capture/Detector)

Catalog Number: 84264-3-PBS



Basic Information

Catalog Number: 84264-3-PBS	GenBank Accession Number: BC022272	Purification Method: Protein A purification
Size: 100ug, Concentration: 1 mg/ml by Nanodrop;	GeneID (NCBI): 2634	CloneNo.: 241580D5
Source: Rabbit	UNIPROT ID: P32456	
Isotype: IgG	Full Name: guanylate binding protein 2, interferon-inducible	
Immunogen Catalog Number: AG2425	Calculated MW: 591 aa, 67 kDa	

Applications

Tested Applications:
Cytometric bead array, Sandwich ELISA, Indirect ELISA, Sample test

Species Specificity:
human

Product Information

84264-3-PBS targets GBP2 as part of a matched antibody pair:

MP01177-2: 84264-4-PBS capture and 84264-3-PBS detection (validated in Cytometric bead array)

MP01177-3: 84264-1-PBS capture and 84264-3-PBS detection (validated in Cytometric bead array)

MP01177-4: 84264-3-PBS capture and 84264-7-PBS detection (validated in Sandwich ELISA)

Unconjugated rabbit recombinant monoclonal antibody in PBS only (BSA and azide free) storage buffer at a concentration of 1 mg/mL, ready for conjugation. Created using Proteintech's proprietary in-house recombinant technology. Recombinant production enables unrivalled batch-to-batch consistency, easy scale-up, and future security of supply.

This conjugation ready format makes antibodies ideal for use in many applications including: ELISAs, multiplex assays requiring matched pairs, mass cytometry, and multiplex imaging applications. Antibody use should be optimized by the end user for each application and assay.

Storage

Storage:
Store at -80°C.

Storage Buffer:
PBS Only

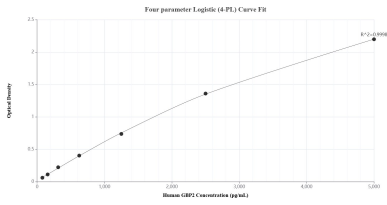
For technical support and original validation data for this product please contact:

T: 1 (888) 4PTGLAB (1-888-478-4522) (toll free in USA), or 1(312) 455-8498 (outside USA)

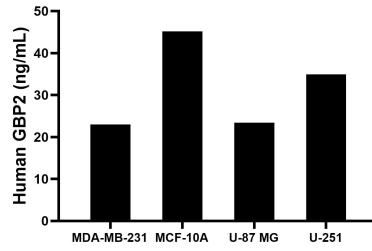
E: proteintech@ptglab.com
W: ptglab.com

This product is exclusively available under Proteintech Group brand and is not available to purchase from any other manufacturer.

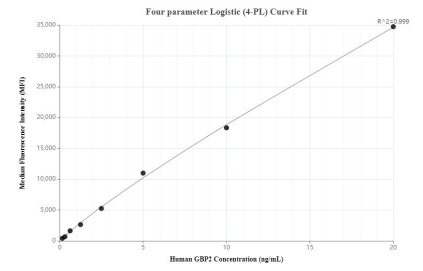
Selected Validation Data



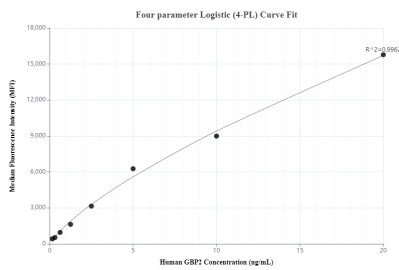
Sandwich ELISA standard curve of MP01177-4, Human GBP2 Recombinant Matched Antibody Pair - PBS only. 84264-3-PBS was coated to a plate as the capture antibody and incubated with serial dilutions of standard Ag2425. 84264-7-PBS was HRP conjugated as the detection antibody. Range: 78.1-5000 pg/mL



The mean GBP2 concentration was determined to be 23.0 ng/mL in MDA-MB-231 cell extract based on a 1.9 mg/mL extract load, 45.1 ng/mL in MCF-10A cell extract based on a 1.3 mg/mL extract load, 23.4 ng/mL in U-87 MG cell extract based on a 2.0 mg/mL extract load and 34.9 ng/mL in U-251 cell extract based on a 1.2 mg/mL extract load.



Cytometric bead array standard curve of MP01177-2, GBP2 Recombinant Matched Antibody Pair, PBS Only. Capture antibody: 84264-4-PBS. Detection antibody: 84264-3-PBS. Standard: Ag2425. Range: 0.156-20 ng/mL



Cytometric bead array standard curve of MP01177-3, GBP2 Recombinant Matched Antibody Pair, PBS Only. Capture antibody: 84264-1-PBS. Detection antibody: 84264-3-PBS. Standard: Ag2425. Range: 0.156-20 ng/mL