

For Research Use Only

C7 Recombinant antibody, PBS Only (Detector)

Catalog Number: 84263-5-PBS



Basic Information

Catalog Number: 84263-5-PBS	GenBank Accession Number: NML_000587.4	Purification Method: Protein A purification
Size: 100ug, Concentration: 1 mg/ml by Nanodrop;	GeneID (NCBI): 730	CloneNo.: 241551D6
Source: Rabbit	UNIPROT ID: P10643	
Isotype: IgG	Full Name: complement component 7	
	Calculated MW: 94kDa	
	Observed MW: 105 kDa	

Applications

Tested Applications:
WB, Cytometric bead array, Indirect ELISA

Species Specificity:
human

Product Information

84263-5-PBS targets C7 as part of a matched antibody pair:

MP01179-1: 84263-1-PBS capture and 84263-5-PBS detection (validated in Cytometric bead array)

Unconjugated rabbit recombinant monoclonal antibody in PBS only (BSA and azide free) storage buffer at a concentration of 1 mg/mL, ready for conjugation. Created using Proteintech's proprietary in-house recombinant technology. Recombinant production enables unrivalled batch-to-batch consistency, easy scale-up, and future security of supply.

This conjugation ready format makes antibodies ideal for use in many applications including: ELISAs, multiplex assays requiring matched pairs, mass cytometry, and multiplex imaging applications. Antibody use should be optimized by the end user for each application and assay.

Background Information

C7, a single-chain plasma glycoprotein, is a component of the complement system. It is also a constituent of the membrane attack complex (MAC), which plays a key role in the innate and adaptive immune response by forming pores in the plasma membrane of target cells. C7 serves as a membrane anchor. People with C7 deficiency are prone to bacterial infection.

Storage

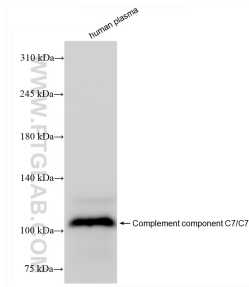
Storage:
Store at -80°C.

Storage Buffer:
PBS Only

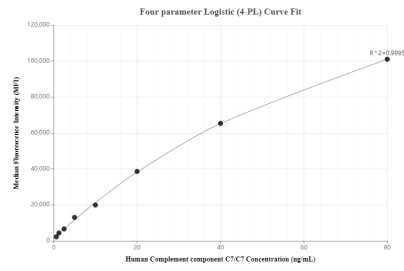
For technical support and original validation data for this product please contact:
T: 1 (888) 4PTGLAB (1-888-478-4522) (toll free in USA), or 1(312) 455-8498 (outside USA) E: proteintech@ptglab.com
W: ptglab.com

This product is exclusively available under Proteintech Group brand and is not available to purchase from any other manufacturer.

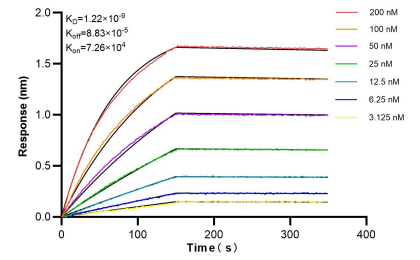
Selected Validation Data



human plasma were subjected to SDS PAGE followed by western blot with 84263-5-RR (C7 antibody) at dilution of 1:10000 incubated at room temperature for 1.5 hours. This data was developed using the same antibody clone with 84263-5-PBS in a different storage buffer formulation.



Cytometric bead array standard curve of MP01179-1, C7 Recombinant Matched Antibody Pair, PBS Only. Capture antibody: 84263-1-PBS. Detection antibody: 84263-5-PBS. Standard: Eg1202. Range: 0.625-80 ng/mL.



Bi-layer interferometry (BLI) kinetic assays of 84263-5-RR against Human C7 were performed. The affinity constant is 1.22 nM.