

For Research Use Only

ASUN Recombinant antibody, PBS Only (Capture)

Catalog Number: 84252-4-PBS



Basic Information

Catalog Number: 84252-4-PBS	GenBank Accession Number: BC003081	Purification Method: Protein A purification
Size: 100ug, Concentration: 1 mg/ml by Nanodrop;	GeneID (NCBI): 55726	CloneNo.: 241586E9
Source: Rabbit	UNIPROT ID: Q9NVM9	
Isotype: IgG	Full Name: chromosome 12 open reading frame 11	
Immunogen Catalog Number: AG13727	Calculated MW: 706 aa, 80 kDa	
	Observed MW: 70-80 kDa	

Applications

Tested Applications:
WB, IF/ICC, Cytometric bead array, Indirect ELISA

Species Specificity:
human

Product Information

84252-4-PBS targets ASUN as part of a matched antibody pair:

MP01142-1: 84252-4-PBS capture and 84252-3-PBS detection (validated in Cytometric bead array)

Unconjugated rabbit recombinant monoclonal antibody in PBS only (BSA and azide free) storage buffer at a concentration of 1 mg/mL, ready for conjugation. Created using Proteintech's proprietary in-house recombinant technology. Recombinant production enables unrivalled batch-to-batch consistency, easy scale-up, and future security of supply.

This conjugation ready format makes antibodies ideal for use in many applications including: ELISAs, multiplex assays requiring matched pairs, mass cytometry, and multiplex imaging applications. Antibody use should be optimized by the end user for each application and assay.

Background Information

Asunder (ASUN) is a conserved protein that has been reported as a critical regulator of dynein localization during *Drosophila* spermatogenesis (PMID: 19357193). Mammalian and *Drosophila* ASUN proteins revealed that they are 43% identical and 64% similar. Human ASUN (also known as GCT1 or C12ORF11) promotes dynein recruitment and centrosomal tethering to the nucleus at mitotic entry (PMID: 23097494).

Storage

Storage:
Store at -80°C.

Storage Buffer:
PBS Only

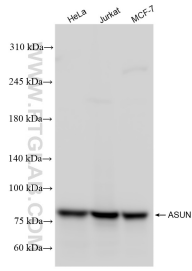
For technical support and original validation data for this product please contact:

T: 1 (888) 4PTGLAB (1-888-478-4522) (toll free in USA), or 1(312) 455-8498 (outside USA)

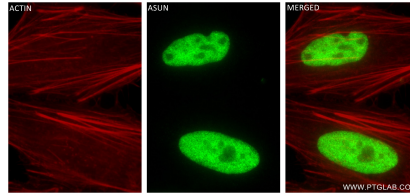
E: proteintech@ptglab.com
W: ptglab.com

This product is exclusively available under Proteintech Group brand and is not available to purchase from any other manufacturer.

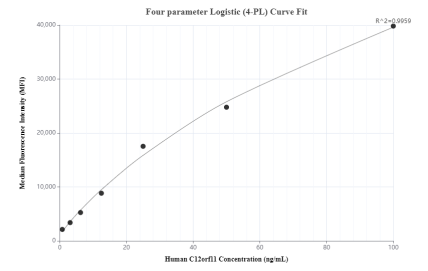
Selected Validation Data



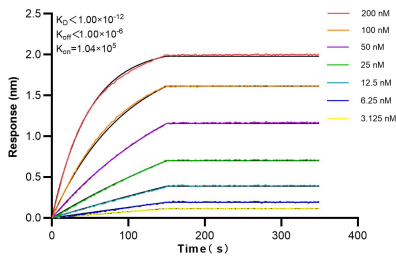
Various lysates were subjected to SDS PAGE followed by western blot with 84252-4-RR (C12orf11 antibody) at dilution of 1:10000 incubated at room temperature for 1.5 hours. This data was developed using the same antibody clone with 84252-4-PBS in a different storage buffer formulation.



Immunofluorescent analysis of (4% PFA) fixed HeLa cells using ASUN antibody (84252-4-RR, Clone: 241586E9) at dilution of 1:400 and CoraLite® 488-Conjugated Goat Anti-Rabbit IgG(H+L) (SA00013-2), CL594-Phalloidin (red). This data was developed using the same antibody clone with 84252-4-PBS in a different storage buffer formulation.



Cytometric bead array standard curve of MP01142-1, ASUN Recombinant Matched Antibody Pair, PBS Only. Capture antibody: 84252-4-PBS. Detection antibody: 84252-3-PBS. Standard: Ag13727. Range: 0.781-100 ng/mL.



Biolayer interferometry (BLI) kinetic assays of 84252-4-RR against Human ASUN were performed. The affinity constant is below 1 pM.