

For Research Use Only

# IFN-gamma Recombinant antibody, PBS Only (Capture)

Catalog Number: 84246-3-PBS



## Basic Information

<b>Catalog Number:</b> 84246-3-PBS	<b>GenBank Accession Number:</b> BC070256	<b>Purification Method:</b> Protein A purification
<b>Size:</b> 100ug , Concentration: 1 mg/ml by Nanodrop;	<b>GeneID (NCBI):</b> 3458	<b>CloneNo.:</b> 241390F9
<b>Source:</b> Rabbit	<b>ENSEMBL Gene ID:</b> ENSG00000111537	
<b>Isotype:</b> IgG	<b>UNIPROT ID:</b> P01579	
	<b>Full Name:</b> IFN gamma	
	<b>Calculated MW:</b> 166 aa, 19 kDa	

## Applications

**Tested Applications:**  
Cytometric bead array, Sandwich ELISA, Indirect ELISA, Sample test

**Species Specificity:**  
human

## Product Information

84246-3-PBS targets IFN-gamma as part of a matched antibody pair:

MP01131-1: 84246-3-PBS capture and 84246-2-PBS detection (validated in Cytometric bead array, Sandwich ELISA)

Unconjugated rabbit recombinant monoclonal antibody in PBS only (BSA and azide free) storage buffer at a concentration of 1 mg/mL, ready for conjugation. Created using Proteintech's proprietary in-house recombinant technology. Recombinant production enables unrivalled batch-to-batch consistency, easy scale-up, and future security of supply.

This conjugation ready format makes antibodies ideal for use in many applications including: ELISAs, multiplex assays requiring matched pairs, mass cytometry, and multiplex imaging applications. Antibody use should be optimized by the end user for each application and assay.

## Storage

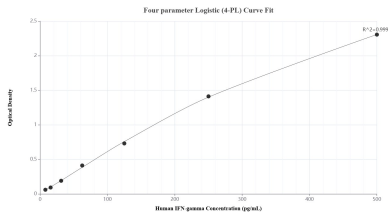
**Storage:**  
Store at -80°C.

**Storage Buffer:**  
PBS Only

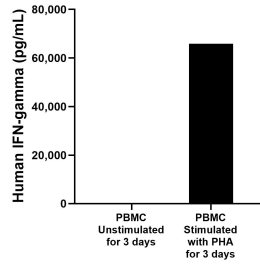
For technical support and original validation data for this product please contact:  
T: 1 (888) 4PTGLAB (1-888-478-4522) (toll free in USA), or 1(312) 455-8498 (outside USA)      E: [proteintech@ptglab.com](mailto:proteintech@ptglab.com)      W: [ptglab.com](http://ptglab.com)

**This product is exclusively available under Proteintech Group brand and is not available to purchase from any other manufacturer.**

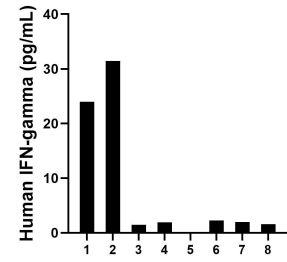
## Selected Validation Data



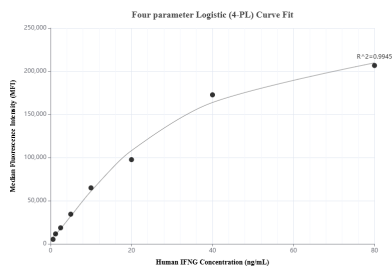
Sandwich ELISA standard curve of MP01131-1, Human IFN-gamma Recombinant Matched Antibody Pair - PBS only. 84246-3-PBS was coated to a plate as the capture antibody and incubated with serial dilutions of standard Eg0004. 84246-2-PBS was HRP conjugated as the detection antibody. Range: 7.80-500 pg/mL.



Human peripheral blood mononuclear cells (PBMC) were cultured unstimulated or stimulated with 10  $\mu$ g/mL PHA for 3 days. For the PBMC supernatant cultured for 3 days, the mean IFN-gamma concentration was determined to be 6.1 pg/mL in unstimulated PBMC supernatant, 65860.8 pg/mL in PHA stimulated PBMC supernatant.



Serum of eight individual healthy human donors was measured. Six measured less than the lowest human IFN-gamma standard, 7.8 pg/mL. Two samples read 24.0 pg/mL and 31.4 pg/mL.



Cytometric bead array standard curve of MP01131-1, IFN-gamma Recombinant Matched Antibody Pair, PBS Only. Capture antibody: 84246-3-PBS. Detection antibody: 84246-2-PBS. Standard: Eg0004. Range: 0.625-80 ng/mL.