

For Research Use Only

IFN-gamma Recombinant antibody, PBS Only (Detector)

Catalog Number: 84246-2-PBS



Basic Information

Catalog Number: 84246-2-PBS	GenBank Accession Number: BC070256	Purification Method: Protein A purification
Size: 100ug, Concentration: 1 mg/ml by Nanodrop;	GeneID (NCBI): 3458	CloneNo.: 241390B1
Source: Rabbit	ENSEMBL Gene ID: ENSG00000111537	
Isotype: IgG	UNIPROT ID: P01579	
	Full Name: IFN gamma	
	Calculated MW: 166 aa, 19 kDa	

Applications

Tested Applications:
Cytometric bead array, Sandwich ELISA, Indirect ELISA, Sample test

Species Specificity:
human

Product Information

84246-2-PBS targets IFN-gamma as part of a matched antibody pair:

MP01131-1: 84246-3-PBS capture and 84246-2-PBS detection (validated in Cytometric bead array, Sandwich ELISA)

MP01131-2: 84246-1-PBS capture and 84246-2-PBS detection (validated in Cytometric bead array)

Unconjugated rabbit recombinant monoclonal antibody in PBS only (BSA and azide free) storage buffer at a concentration of 1 mg/mL, ready for conjugation. Created using Proteintech's proprietary in-house recombinant technology. Recombinant production enables unrivalled batch-to-batch consistency, easy scale-up, and future security of supply.

This conjugation ready format makes antibodies ideal for use in many applications including: ELISAs, multiplex assays requiring matched pairs, mass cytometry, and multiplex imaging applications. Antibody use should be optimized by the end user for each application and assay.

Storage

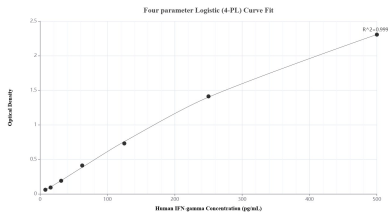
Storage:
Store at -80°C.

Storage Buffer:
PBS Only

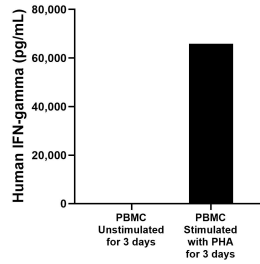
For technical support and original validation data for this product please contact:
T: 1 (888) 4PTGLAB (1-888-478-4522) (toll free in USA), or 1(312) 455-8498 (outside USA) E: proteintech@ptglab.com
W: ptglab.com

This product is exclusively available under Proteintech Group brand and is not available to purchase from any other manufacturer.

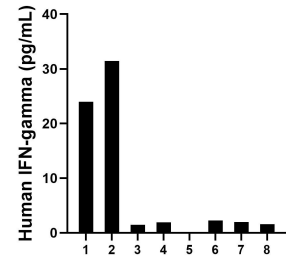
Selected Validation Data



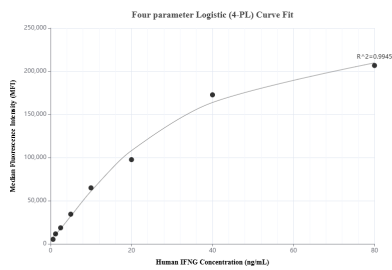
Sandwich ELISA standard curve of MP01131-1, Human IFN-gamma Recombinant Matched Antibody Pair - PBS only. 84246-3-PBS was coated to a plate as the capture antibody and incubated with serial dilutions of standard Eg0004. 84246-2-PBS was HRP conjugated as the detection antibody. Range: 7.80-500 pg/mL.



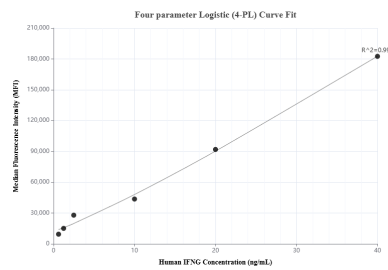
Human peripheral blood mononuclear cells (PBMC) were cultured unstimulated or stimulated with 10 µg/mL PHA for 3 days. For the PBMC supernatant cultured for 3 days, the mean IFN-gamma concentration was determined to be 6.1 pg/mL in unstimulated PBMC supernatant, 65860.8 pg/mL in PHA stimulated PBMC supernatant.



Serum of eight individual healthy human donors was measured. Six measured less than the lowest human IFN-gamma standard, 7.8 pg/mL. Two samples read 24.0 pg/mL and 31.4 pg/mL.



Cytometric bead array standard curve of MP01131-1, IFN-gamma/IFN-gamma Recombinant Matched Antibody Pair, PBS Only. Capture antibody: 84246-3-PBS. Detection antibody: 84246-2-PBS. Standard: Eg0004. Range: 0.625-80 ng/mL.



Cytometric bead array standard curve of MP01131-2, IFN-gamma/IFN-gamma Recombinant Matched Antibody Pair, PBS Only. Capture antibody: 84246-1-PBS. Detection antibody: 84246-2-PBS. Standard: Eg0004. Range: 0.625-40 ng/mL.