

For Research Use Only

CD84 Recombinant antibody, PBS Only (Detector)

Catalog Number: 84245-2-PBS



Basic Information

Catalog Number: 84245-2-PBS	GenBank Accession Number: BC020063	Purification Method: Protein A purification
Size: 100ug, Concentration: 1 mg/ml by Nanodrop;	GeneID (NCBI): 8832	CloneNo.: 241342F3
Source: Rabbit	UNIPROT ID: Q9UIB8	
Isotype: IgG	Full Name: CD84 molecule	
	Calculated MW: 345 aa, 39 kDa	
	Observed MW: 70 kDa	

Applications

Tested Applications:
WB, IF/ICC, Cytometric bead array, Indirect ELISA

Species Specificity:
human

Product Information

84245-2-PBS targets CD84 as part of a matched antibody pair:

MP01112-1: 98108-1-PBS capture and 84245-2-PBS detection (validated in Cytometric bead array)

MP01112-3: 84245-3-PBS capture and 84245-2-PBS detection (validated in Cytometric bead array)

Unconjugated rabbit recombinant monoclonal antibody in PBS only (BSA and azide free) storage buffer at a concentration of 1 mg/mL, ready for conjugation. Created using Proteintech's proprietary in-house recombinant technology. Recombinant production enables unrivalled batch-to-batch consistency, easy scale-up, and future security of supply.

This conjugation ready format makes antibodies ideal for use in many applications including: ELISAs, multiplex assays requiring matched pairs, mass cytometry, and multiplex imaging applications. Antibody use should be optimized by the end user for each application and assay.

Background Information

CD84, also known as SLAMF5, is a member of the CD2 subfamily of the immunoglobulin receptor superfamily (PMID: 9310491). CD84 is a single-chain type-I glycoprotein composed of two extracellular Ig-like domains, a hydrophobic transmembrane region, and a cytoplasmic domain. It is broadly expressed on almost all leukocyte subsets. CD84 functions as a homophilic adhesion molecule, whose signaling can activate or inhibit leukocyte function depending on the cell type and its stage of activation or differentiation (PMID: 30522694).

Storage

Storage:
Store at -80°C.

Storage Buffer:
PBS Only

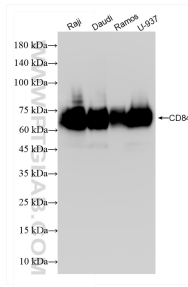
For technical support and original validation data for this product please contact:

T: 1 (888) 4PTGLAB (1-888-478-4522) (toll free in USA), or 1(312) 455-8498 (outside USA)

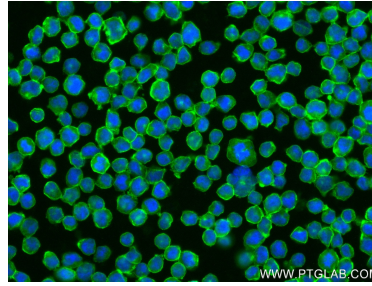
E: proteintech@ptglab.com
W: ptglab.com

This product is exclusively available under Proteintech Group brand and is not available to purchase from any other manufacturer.

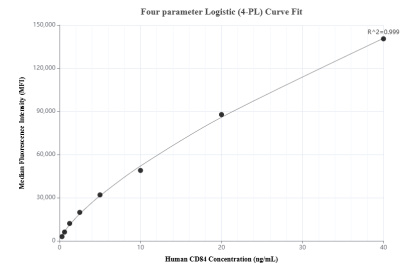
Selected Validation Data



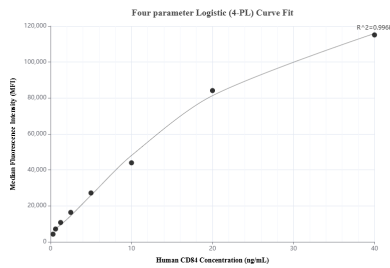
Various lysates were subjected to SDS PAGE followed by western blot with 84245-2-RR (CD84 antibody) at dilution of 1:4000 incubated at room temperature for 1.5 hours. This data was developed using the same antibody clone with 84245-2-PBS in a different storage buffer formulation.



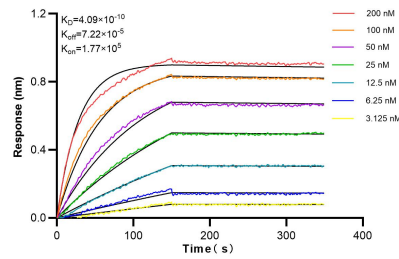
Immunofluorescent analysis of (4% PFA) fixed Raji cells using CD84 antibody (84245-2-RR, Clone: 241342F3) at dilution of 1:400 and CoraLite® 488-Conjugated Goat Anti-Rabbit IgG(H+L) (SA00013-2). This data was developed using the same antibody clone with 84245-2-PBS in a different storage buffer formulation.



Cytometric bead array standard curve of MP0112-1, CD84 Recombinant Matched Antibody Pair, PBS Only. Capture antibody: 98108-1-PBS. Detection antibody: 84245-2-PBS. Standard: RP02347. Range: 0.313-40 ng/mL



Cytometric bead array standard curve of MP0112-3, CD84 Recombinant Matched Antibody Pair, PBS Only. Capture antibody: 84245-3-PBS. Detection antibody: 84245-2-PBS. Standard: RP02347. Range: 0.313-40 ng/mL



Biolayer interferometry (BLI) kinetic assays of 84245-2-RR against Human CD84 were performed. The affinity constant is 0.409 nM.