

For Research Use Only

CD30/TNFRSF8 Recombinant antibody, PBS Only (Capture)

Catalog Number: 84241-2-PBS



Basic Information

Catalog Number:

84241-2-PBS

Size:

100ug, Concentration: 1 mg/ml by
Nanodrop;

Source:

Rabbit

Isotype:

IgG

GenBank Accession Number:

NM_001243

GeneID (NCBI):

943

UNIPROT ID:

P28908

Full Name:

tumor necrosis factor receptor
superfamily, member 8

Calculated MW:

64 kDa

Observed MW:

120 kDa

Purification Method:

Protein A purification

CloneNo.:

241330G11

Applications

Tested Applications:

WB, Cytometric bead array, Sandwich ELISA, Indirect
ELISA, Sample test

Species Specificity:

human

Product Information

84241-2-PBS targets CD30/TNFRSF8 as part of a matched antibody pair.

MP01137-1: 84241-2-PBS capture and 84241-4-PBS detection (validated in Cytometric bead array, Sandwich ELISA)

MP01137-2: 84241-2-PBS capture and 84241-3-PBS detection (validated in Cytometric bead array)

MP01137-3: 84241-2-PBS capture and 84241-1-PBS detection (validated in Cytometric bead array)

Unconjugated rabbit recombinant monoclonal antibody in PBS only (BSA and azide free) storage buffer at a concentration of 1 mg/mL, ready for conjugation. Created using Proteintech's proprietary in-house recombinant technology. Recombinant production enables unrivalled batch-to-batch consistency, easy scale-up, and future security of supply.

This conjugation ready format makes antibodies ideal for use in many applications including: ELISAs, multiplex assays requiring matched pairs, mass cytometry, and multiplex imaging applications. Antibody use should be optimized by the end user for each application and assay.

Background Information

CD30, also known as TNFRSF8 or Ki-1, is a transmembrane glycoprotein belonging to the tumor necrosis factor receptor superfamily. It is composed of an extracellular domain with six cysteine-rich repeats, a transmembrane segment, and an intracellular domain (PMID: 1310894). CD30 is expressed on a small subset of activated T and B lymphocytes, and a variety of lymphoid neoplasms, with the highest expression in classical Hodgkin's lymphoma and anaplastic large cell lymphoma (PMID: 9826579; 28885612). The CD30 ligand (CD30L or CD153) is a type II transmembrane glycoprotein of the tumor necrosis factor ligand superfamily (PMID: 8701986). Signal transduction of CD30/CD30L utilizes signal transducers, TNFR-associated factors (TRAF1, 2, 3 and 5) (PMID: 9826579).

Storage

Storage:

Store at -80°C.

Storage Buffer:

PBS Only

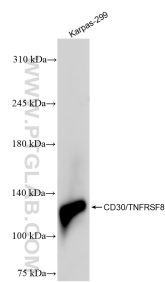
For technical support and original validation data for this product please contact:

T: 1 (888) 4PTGLAB (1-888-478-4522) (toll free
in USA), or 1(312) 455-8498 (outside USA)

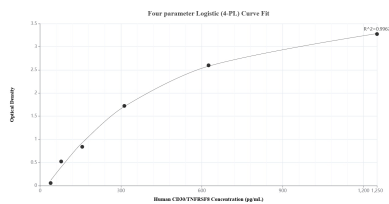
E: proteintech@ptglab.com
W: ptglab.com

This product is exclusively available under Proteintech Group brand and is not available to purchase from any other manufacturer.

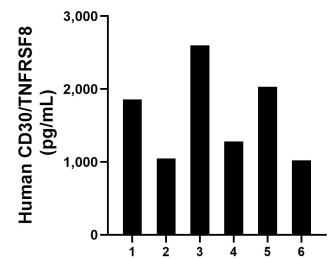
Selected Validation Data



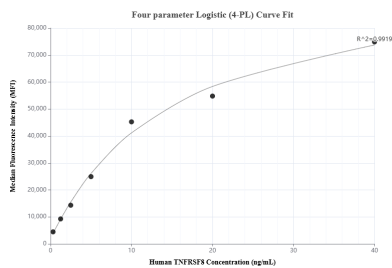
Karpas-299 cells were subjected to SDS PAGE followed by western blot with 84241-2-RR (CD30/TNFRSF8 antibody) at dilution of 1:10000 incubated at room temperature for 1.5 hours. This data was developed using the same antibody clone with 84241-2-PBS in a different storage buffer formulation.



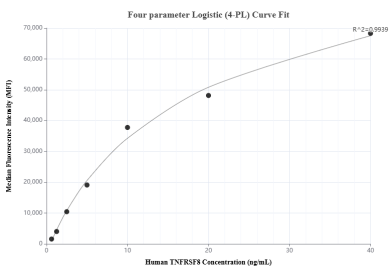
Sandwich ELISA standard curve of MP01137-1, Human CD30/TNFRSF8 Recombinant Matched Antibody Pair - PBS only. 84241-2-PBS was coated to a plate as the capture antibody and incubated with serial dilutions of standard RP02334. 84241-4-PBS was HRP conjugated as the detection antibody. Range: 39.1-1250 pg/mL.



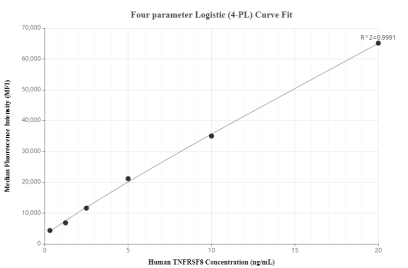
Serum of six individual healthy human donors was measured. The CD30/TNFRSF8 concentration of detected samples was determined to be 1,639.1 pg/mL with a range of 1,021.2-2,597.7 pg/mL.



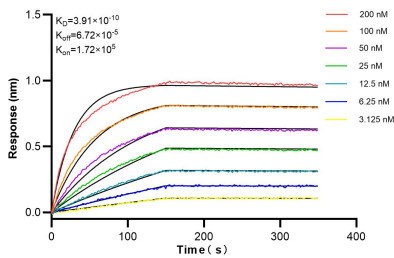
Cytometric bead array standard curve of MP01137-1, TNFRSF8/CD30 Recombinant Matched Antibody Pair, PBS Only. Capture antibody: 84241-2-PBS. Detection antibody: 84241-4-PBS. Standard: RP02334. Range: 0.313-40 ng/mL.



Cytometric bead array standard curve of MP01137-2, TNFRSF8/CD30 Recombinant Matched Antibody Pair, PBS Only. Capture antibody: 84241-2-PBS. Detection antibody: 84241-3-PBS. Standard: RP02334. Range: 0.625-40 ng/mL.



Cytometric bead array standard curve of MP01137-3, TNFRSF8/CD30 Recombinant Matched Antibody Pair, PBS Only. Capture antibody: 84241-2-PBS. Detection antibody: 84241-1-PBS. Standard: RP02334. Range: 0.313-20 ng/mL.



Bi-layer interferometry (BLI) kinetic assays of 84241-2-RR against Human CD30/TNFRSF8 were performed. The affinity constant is 0.391 nM.