

For Research Use Only

CD8B Recombinant antibody, PBS Only (Detector)

Catalog Number: 84240-1-PBS



Basic Information

Catalog Number: 84240-1-PBS	GenBank Accession Number: BC100913	Purification Method: Protein A purification
Size: 100ug, Concentration: 1 mg/ml by Nanodrop;	GeneID (NCBI): 926	CloneNo.: 241326C9
Source: Rabbit	UNIPROT ID: P10966	
Isotype: IgG	Full Name: CD8b molecule	
	Calculated MW: 243 aa, 27 kDa	

Applications

Tested Applications:
Cytometric bead array, Sandwich ELISA, Indirect ELISA,
Sample test

Species Specificity:
human

Product Information

84240-1-PBS targets CD8B as part of a matched antibody pair:

MP01133-1: 84240-3-PBS capture and 84240-1-PBS detection (validated in Cytometric bead array, Sandwich ELISA)

MP01133-2: 84240-2-PBS capture and 84240-1-PBS detection (validated in Cytometric bead array)

Unconjugated rabbit recombinant monoclonal antibody in PBS only (BSA and azide free) storage buffer at a concentration of 1 mg/mL, ready for conjugation. Created using Proteintech's proprietary in-house recombinant technology. Recombinant production enables unrivalled batch-to-batch consistency, easy scale-up, and future security of supply.

This conjugation ready format makes antibodies ideal for use in many applications including: ELISAs, multiplex assays requiring matched pairs, mass cytometry, and multiplex imaging applications. Antibody use should be optimized by the end user for each application and assay.

Storage

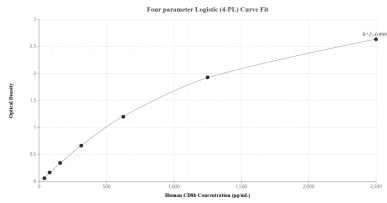
Storage:
Store at -80°C.

Storage Buffer:
PBS Only

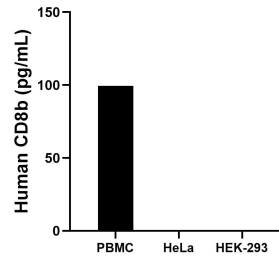
For technical support and original validation data for this product please contact:
T: 1 (888) 4PTGLAB (1-888-478-4522) (toll free in USA), or 1(312) 455-8498 (outside USA) E: proteintech@ptglab.com
W: ptglab.com

This product is exclusively available under Proteintech Group brand and is not available to purchase from any other manufacturer.

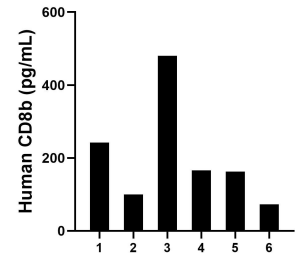
Selected Validation Data



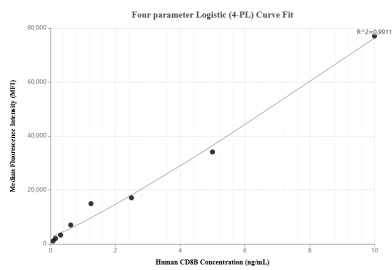
Sandwich ELISA standard curve of MP01133-1, Human CD8b Recombinant Matched Antibody Pair - PBS only. 84240-3-PBS was coated to a plate as the capture antibody and incubated with serial dilutions of standard RPO2351. 84240-1-PBS was HRP conjugated as the detection antibody. Range: 39.1-2500 pg/mL



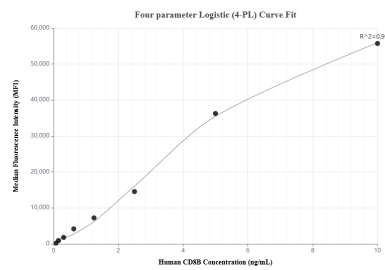
Human peripheral blood mononuclear cells (PBMCs), with HeLa and HEK-293 as negative controls, were cultured for 5 days. The mean concentration of CD8b was measured 99.4 pg/mL in the PBMC supernatant, undetectable in HeLa and HEK-293 supernatants.



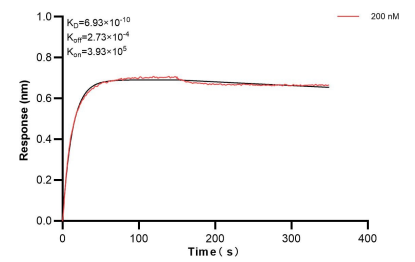
Serum of six individual healthy human donors was measured. The CD8b concentration of detected samples was determined to be 204 pg/mL with a range of 73-480 pg/mL.



Cytometric bead array standard curve of MP01133-1, CD8b Recombinant Matched Antibody Pair, PBS Only. Capture antibody: 84240-3-PBS. Detection antibody: 84240-1-PBS. Standard: RPO2351. Range: 0.078-10 ng/mL



Cytometric bead array standard curve of MP01133-2, CD8b Recombinant Matched Antibody Pair, PBS Only. Capture antibody: 84240-2-PBS. Detection antibody: 84240-1-PBS. Standard: RPO2351. Range: 0.078-10 ng/mL



Bi-layer interferometry (BLI) kinetic assay of 84240-1-PBS against Human CD8b was performed. The affinity constant is 0.693 nM.