

For Research Use Only

# GCGR Recombinant antibody

Catalog Number: 84237-5-RR



## Basic Information

Catalog Number:

84237-5-RR

Size:

100ul, Concentration: 1000 µg/ml by  
Nanodrop;

Source:

Rabbit

Isotype:

IgG

Immunogen Catalog Number:

AG24861

GenBank Accession Number:

BC104854

GeneID (NCBI):

2642

UNIPROT ID:

P47871

Full Name:

glucagon receptor

Calculated MW:

477 aa, 54 kDa

Observed MW:

62-68 kDa

Purification Method:

Protein A purification

CloneNo.:

241501C4

Recommended Dilutions:

WB 1:5000-1:50000

## Applications

Tested Applications:

WB, ELISA

Species Specificity:

human, mouse

Positive Controls:

WB : mouse heart tissue, mouse kidney tissue, mouse  
liver tissue

## Background Information

Glucagon receptor (GCGR) is a secretin-like (class B) family of G-protein coupled receptors (GPCRs). It plays an important role in elevating the glucose concentration in the blood and has thus become one of the promising therapeutic targets for treating type 2 diabetes mellitus (PMID: 26236379). GCGR is a 62-kDa glycoprotein that contains at least four N-linked oligosaccharide chains (PMID: 2174441; 15245877). Defects in the gene of GCGR cause non-insulin-dependent diabetes mellitus (NIDDM).

## Storage

Storage:

Store at -20°C. Stable for one year after shipment.

Storage Buffer:

PBS with 0.02% sodium azide and 50% glycerol pH 7.3.

Aliquoting is unnecessary for -20°C storage

\*\*\* 20ul sizes contain 0.1% BSA

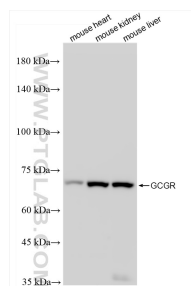
For technical support and original validation data for this product please contact:

T: 1 (888) 4PTGLAB (1-888-478-4522) (toll free  
in USA), or 1(312) 455-8498 (outside USA)

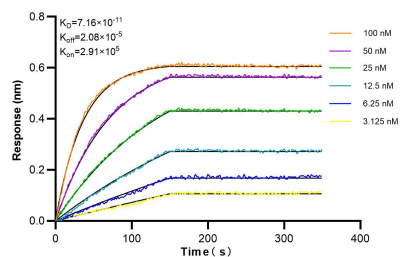
E: [proteintech@ptglab.com](mailto:proteintech@ptglab.com)  
W: [ptglab.com](http://ptglab.com)

This product is exclusively available under Proteintech Group brand and is not available to purchase from any other manufacturer.

## Selected Validation Data



Various lysates were subjected to SDS PAGE followed by western blot with 84237-5-RR (GCCR antibody) at dilution of 1:10000 incubated at room temperature for 1.5 hours.



Biolayer interferometry (BLI) kinetic assays of 84237-5-RR against Human GCCR were performed. The affinity constant is 71.6 pM.