

For Research Use Only

# IL2RB Recombinant antibody, PBS Only (Capture)

Catalog Number: 84229-4-PBS



## Basic Information

<b>Catalog Number:</b> 84229-4-PBS	<b>GenBank Accession Number:</b> BC025691	<b>Purification Method:</b> Protein A purification
<b>Size:</b> 100ug, Concentration: 1 mg/ml by Nanodrop;	<b>GeneID (NCBI):</b> 3560	<b>CloneNo.:</b> 241408G10
<b>Source:</b> Rabbit	<b>ENSEMBL Gene ID:</b> ENSG00000100385	
<b>Isotype:</b> IgG	<b>UNIPROT ID:</b> P14784	
<b>Immunogen Catalog Number:</b> AG3929	<b>Full Name:</b> interleukin 2 receptor, beta	
	<b>Calculated MW:</b> 551 aa, 61 kDa	

## Applications

**Tested Applications:**  
Sandwich ELISA, Indirect ELISA, Sample test

**Species Specificity:**  
human

## Product Information

84229-4-PBS targets IL2RB as part of a matched antibody pair:

MP01123-3: 84229-4-PBS capture and 84229-1-PBS detection (validated in Sandwich ELISA)

Unconjugated rabbit recombinant monoclonal antibody in PBS only (BSA and azide free) storage buffer at a concentration of 1 mg/mL, ready for conjugation. Created using Proteintech's proprietary in-house recombinant technology. Recombinant production enables unrivalled batch-to-batch consistency, easy scale-up, and future security of supply.

This conjugation ready format makes antibodies ideal for use in many applications including: ELISAs, multiplex assays requiring matched pairs, mass cytometry, and multiplex imaging applications. Antibody use should be optimized by the end user for each application and assay.

## Storage

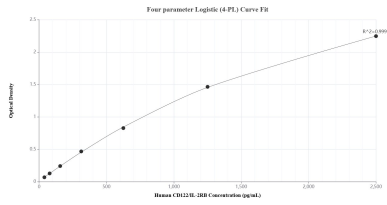
**Storage:**  
Store at -80°C.

**Storage Buffer:**  
PBS Only

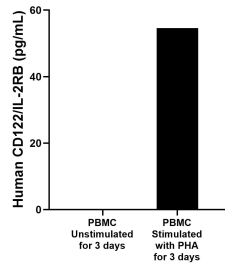
For technical support and original validation data for this product please contact:  
T: 1 (888) 4PTGLAB (1-888-478-4522) (toll free in USA), or 1(312) 455-8498 (outside USA)      E: proteintech@ptglab.com  
W: ptglab.com

This product is exclusively available under Proteintech Group brand and is not available to purchase from any other manufacturer.

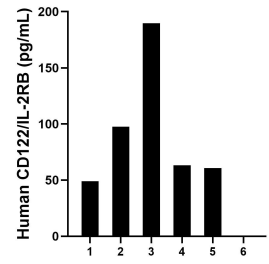
## Selected Validation Data



Sandwich ELISA standard curve of MP01123-3, Human CD122/IL-2RB Recombinant Matched Antibody Pair - PBS only. 84229-4-PBS was coated to a plate as the capture antibody and incubated with serial dilutions of standard Ag3929. 84229-1-PBS was HRP conjugated as the detection antibody. Range: 39.1-2500 pg/mL



Human peripheral blood mononuclear cells (PBMC) were cultured unstimulated or stimulated with 10 µg/mL PHA for 3 days. The mean CD122/IL-2RB concentration was not determined in unstimulated PBMC supernatant, 54.6 pg/mL in PHA stimulated PBMC supernatant.



Serum of six individual healthy human donors was measured. The CD122/IL-2RB concentration of detected samples was determined to be 92.1 pg/mL with a range of 49.0-189.6 pg/mL.