

For Research Use Only

ZC3H13 Recombinant antibody, PBS Only (Capture/Detector)

Catalog Number:84228-1-PBS



Basic Information

Catalog Number: 84228-1-PBS	GenBank Accession Number: NM_001076788	Purification Method: Protein A purification
Size: 100ug , Concentration: 1 mg/ml by Nanodrop;	GeneID (NCBI): 23091	CloneNo.: 241516A6
Source: Rabbit	UNIPROT ID: Q5T200	
Isotype: IgG	Full Name: zinc finger CCCH-type containing 13	
Immunogen Catalog Number: AG28909	Calculated MW: 197 kDa	

Applications

Tested Applications:
Cytometric bead array, Sandwich ELISA, Indirect ELISA, Sample test

Species Specificity:
human

Product Information

84228-1-PBS targets ZC3H13 as part of a matched antibody pair:

MP01121-1: 84228-3-PBS capture and 84228-1-PBS detection (validated in Cytometric bead array)

MP01121-3: 84228-1-PBS capture and 84228-2-PBS detection (validated in Sandwich ELISA)

Unconjugated rabbit recombinant monoclonal antibody in PBS only (BSA and azide free) storage buffer at a concentration of 1 mg/mL, ready for conjugation. Created using Proteintech's proprietary in-house recombinant technology. Recombinant production enables unrivalled batch-to-batch consistency, easy scale-up, and future security of supply.

This conjugation ready format makes antibodies ideal for use in many applications including: ELISAs, multiplex assays requiring matched pairs, mass cytometry, and multiplex imaging applications. Antibody use should be optimized by the end user for each application and assay.

Storage

Storage:
Store at -80°C.
Storage Buffer:
PBS Only

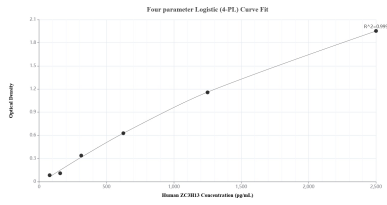
For technical support and original validation data for this product please contact:

T: 1 (888) 4PTGLAB (1-888-478-4522) (toll free in USA), or 1(312) 455-8498 (outside USA)

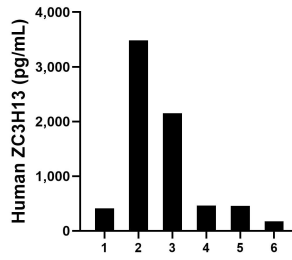
E: proteintech@ptglab.com
W: ptglab.com

This product is exclusively available under Proteintech Group brand and is not available to purchase from any other manufacturer.

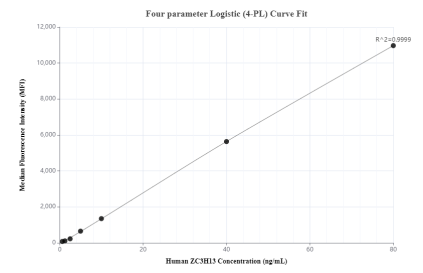
Selected Validation Data



Sandwich ELISA standard curve of MP01121-3, Human ZC3H13 Recombinant Matched Antibody Pair - PBS only. 84228-1-PBS was coated to a plate as the capture antibody and incubated with serial dilutions of standard Ag28909. 84228-2-PBS was HRP conjugated as the detection antibody. Range: 78.1-2500 pg/mL



Serum of six individual healthy human donors was measured. The ZC3H13 concentration of detected samples was determined to be 1,191.0 pg/mL with a range of 175.7-3,486.0 pg/mL.



Cytometric bead array standard curve of MP01121-1, ZC3H13 Recombinant Matched Antibody Pair, PBS Only. Capture antibody: 84228-3-PBS. Detection antibody: 84228-1-PBS. Standard: Ag28909. Range: 0.625-80 ng/mL