

For Research Use Only

TADA2L Recombinant antibody, PBS Only (Detector)

Catalog Number: 84227-2-PBS



Basic Information

Catalog Number: 84227-2-PBS	GenBank Accession Number: BC011753	Purification Method: Protein A purification
Size: 100ug, Concentration: 1 mg/ml by Nanodrop;	GeneID (NCBI): 6871	CloneNo.: 241508D8
Source: Rabbit	UNIPROT ID: O75478	
Isotype: IgG	Full Name: transcriptional adaptor 2 (ADA2 homolog, yeast)-like	
Immunogen Catalog Number: AG1817	Calculated MW: 51 aa, 5 kDa	
	Observed MW: 35-50 kDa	

Applications

Tested Applications:
WB, Cytometric bead array, Indirect ELISA

Species Specificity:
human

Product Information

84227-2-PBS targets TADA2L as part of a matched antibody pair:

MP01119-1: 84227-1-PBS capture and 84227-2-PBS detection (validated in Cytometric bead array)

Unconjugated rabbit recombinant monoclonal antibody in PBS only (BSA and azide free) storage buffer at a concentration of 1 mg/mL, ready for conjugation. Created using Proteintech's proprietary in-house recombinant technology. Recombinant production enables unrivalled batch-to-batch consistency, easy scale-up, and future security of supply.

This conjugation ready format makes antibodies ideal for use in many applications including: ELISAs, multiplex assays requiring matched pairs, mass cytometry, and multiplex imaging applications. Antibody use should be optimized by the end user for each application and assay.

Background Information

TADA2A is a subunit of the ADA2A-containing (ATAC) histone acetyltransferase complex, which with histone acetyltransferase activity on histones H3 and H4. It is required for the function of some acidic activation domains, which activate transcription from a distant site. It has a role in chromatin remodeling by binding at the linker region between neighbouring nucleosomes of dinucleosomes [PMID:19103755].

Storage

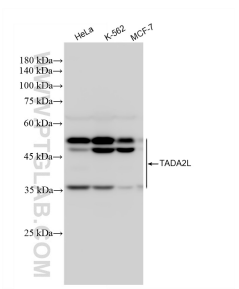
Storage:
Store at -80°C.

Storage Buffer:
PBS Only

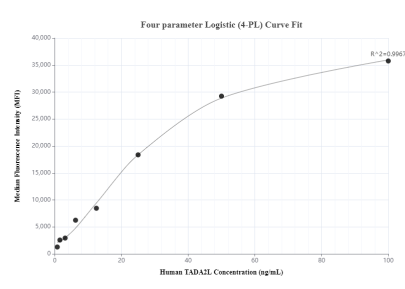
For technical support and original validation data for this product please contact:
T: 1 (888) 4PTGLAB (1-888-478-4522) (toll free in USA), or 1(312) 455-8498 (outside USA)
E: proteintech@ptglab.com
W: ptglab.com

This product is exclusively available under Proteintech Group brand and is not available to purchase from any other manufacturer.

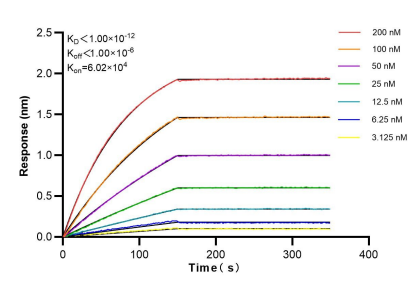
Selected Validation Data



Various lysates were subjected to SDS PAGE followed by western blot with 84227-2-RR (TADA2L antibody) at dilution of 1:10000 incubated at room temperature for 1.5 hours. This data was developed using the same antibody clone with 84227-2-PBS in a different storage buffer formulation.



Cytometric bead array standard curve of MP01119-1, TADA2L Recombinant Matched Antibody Pair, PBS Only. Capture antibody: 84227-1-PBS. Detection antibody: 84227-2-PBS. Standard:null. Range: null.



Biolayer interferometry (BLI) kinetic assays of 84227-2-RR against Human TADA2L were performed. The affinity constant is below 1 pM.