

For Research Use Only

CLPS Recombinant antibody

Catalog Number: 84224-2-RR



Basic Information

Catalog Number: 84224-2-RR	GenBank Accession Number: BC017897	Purification Method: Protein A purification
Size: 100ul , Concentration: 1000 µg/ml by Nanodrop;	GeneID (NCBI): 1208	CloneNo.: 241565H3
Source: Rabbit	UNIPROT ID: P04118	Recommended Dilutions: WB 1:5000-1:50000 IHC 1:4000-1:16000
Isotype: IgG	Full Name: colipase, pancreatic	
Immunogen Catalog Number: AG2321	Calculated MW: 12 kDa	
	Observed MW: 12 kDa	

Applications

Tested Applications:
WB, IHC, ELISA

Species Specificity:
human, mouse, rat

Note-IHC: suggested antigen retrieval with TE buffer pH 9.0; (*) Alternatively, antigen retrieval may be performed with citrate buffer pH 6.0

Positive Controls:

WB : rat pancreas tissue,

IHC : mouse pancreas tissue,

Background Information

Pancreatic colipase is a 12-kDa polypeptide cofactor for pancreatic lipase (EC 3.1.1.3), an enzyme essential for the absorption of dietary long-chain triglyceride fatty acids. Colipase is thought to anchor lipase noncovalently to the surface of lipid micelles, counteracting the destabilizing influence of intestinal bile salts.

Storage

Storage:

Store at -20°C. Stable for one year after shipment.

Storage Buffer:

PBS with 0.02% sodium azide and 50% glycerol pH 7.3.

Aliquoting is unnecessary for -20°C storage

*** 20ul sizes contain 0.1% BSA

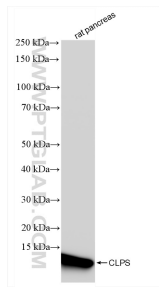
For technical support and original validation data for this product please contact:

T: 1 (888) 4PTGLAB (1-888-478-4522) (toll free in USA), or 1(312) 455-8498 (outside USA)

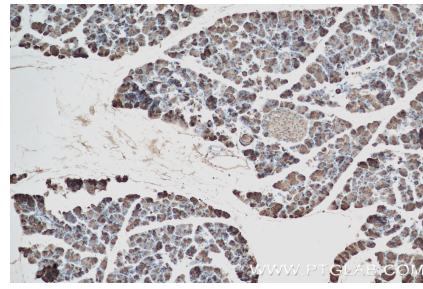
E: proteintech@ptglab.com
W: ptglab.com

This product is exclusively available under Proteintech Group brand and is not available to purchase from any other manufacturer.

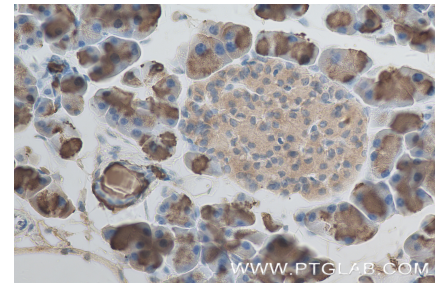
Selected Validation Data



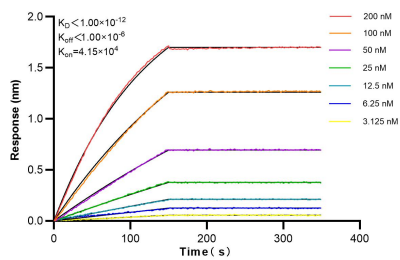
rat pancreas tissue were subjected to SDS PAGE followed by western blot with 84224-2-RR (CLPS antibody) at dilution of 1:10000 incubated at room temperature for 1.5 hours.



Immunohistochemical analysis of paraffin-embedded mouse pancreas tissue slide using 84224-2-RR (CLPS antibody) at dilution of 1:8000 (under 10x lens). Heat mediated antigen retrieval with Tris-EDTA buffer (pH 9.0).



Immunohistochemical analysis of paraffin-embedded mouse pancreas tissue slide using 84224-2-RR (CLPS antibody) at dilution of 1:8000 (under 40x lens). Heat mediated antigen retrieval with Tris-EDTA buffer (pH 9.0).



Biolayer interferometry (BLI) kinetic assays of 84224-2-RR against Human CLPS were performed. The affinity constant is below 1 pM.