

For Research Use Only

CLPS Recombinant antibody, PBS Only (Detector)

Catalog Number: 84224-2-PBS



Basic Information

Catalog Number: 84224-2-PBS	GenBank Accession Number: BC017897	Purification Method: Protein A purification
Size: 100ug, Concentration: 1 mg/ml by Nanodrop;	GeneID (NCBI): 1208	CloneNo.: 241565H3
Source: Rabbit	UNIPROT ID: P04118	
Isotype: IgG	Full Name: colipase, pancreatic	
Immunogen Catalog Number: AG2321	Calculated MW: 12 kDa	
	Observed MW: 12 kDa	

Applications

Tested Applications:
WB, IHC, Cytometric bead array, Indirect ELISA

Species Specificity:
human, mouse, rat

Product Information

84224-2-PBS targets CLPS as part of a matched antibody pair:

MP01160-1: 84224-1-PBS capture and 84224-2-PBS detection (validated in Cytometric bead array)

Unconjugated rabbit recombinant monoclonal antibody in PBS only (BSA and azide free) storage buffer at a concentration of 1 mg/mL, ready for conjugation. Created using Proteintech's proprietary in-house recombinant technology. Recombinant production enables unrivalled batch-to-batch consistency, easy scale-up, and future security of supply.

This conjugation ready format makes antibodies ideal for use in many applications including: ELISAs, multiplex assays requiring matched pairs, mass cytometry, and multiplex imaging applications. Antibody use should be optimized by the end user for each application and assay.

Background Information

Pancreatic colipase is a 12-kDa polypeptide cofactor for pancreatic lipase (EC 3.1.1.3), an enzyme essential for the absorption of dietary long-chain triglyceride fatty acids. Colipase is thought to anchor lipase noncovalently to the surface of lipid micelles, counteracting the destabilizing influence of intestinal bile salts.

Storage

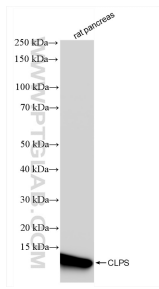
Storage:
Store at -80°C.

Storage Buffer:
PBS Only

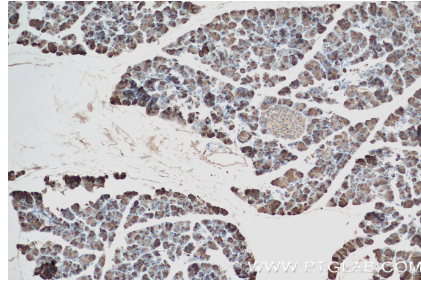
For technical support and original validation data for this product please contact:
T: 1 (888) 4PTGLAB (1-888-478-4522) (toll free in USA), or 1(312) 455-8498 (outside USA) E: proteintech@ptglab.com W: ptglab.com

This product is exclusively available under Proteintech Group brand and is not available to purchase from any other manufacturer.

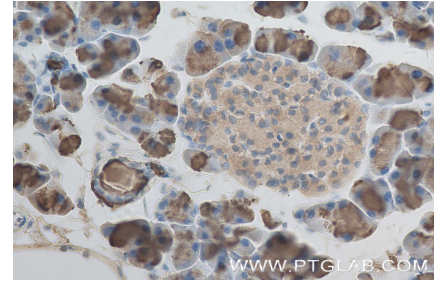
Selected Validation Data



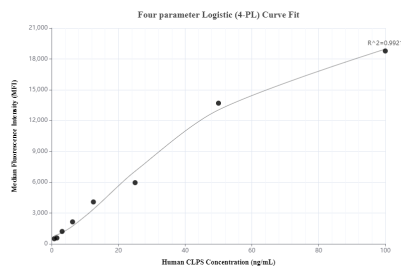
rat pancreas tissue were subjected to SDS PAGE followed by western blot with 84224-2-RR (CLPS antibody) at dilution of 1:10000 incubated at room temperature for 1.5 hours. This data was developed using the same antibody clone with 84224-2-PBS in a different storage buffer formulation.



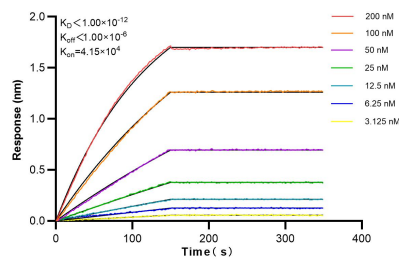
Immunohistochemical analysis of paraffin-embedded mouse pancreas tissue slide using 84224-2-RR (CLPS antibody) at dilution of 1:8000 (under 10x lens). Heat mediated antigen retrieval with Tris-EDTA buffer (pH 9.0). This data was developed using the same antibody clone with 84224-2-PBS in a different storage buffer formulation.



Immunohistochemical analysis of paraffin-embedded mouse pancreas tissue slide using 84224-2-RR (CLPS antibody) at dilution of 1:8000 (under 40x lens). Heat mediated antigen retrieval with Tris-EDTA buffer (pH 9.0). This data was developed using the same antibody clone with 84224-2-PBS in a different storage buffer formulation.



Cytometric bead array standard curve of MP01160-1, CLPS Recombinant Matched Antibody Pair, PBS Only. Capture antibody: 84224-1-PBS. Detection antibody: 84224-2-PBS. Standard: Ag2321. Range: 0.781-100 ng/mL.



Biolayer interferometry (BLI) kinetic assays of 84224-2-RR against Human CLPS were performed. The affinity constant is below 1 pM.