

For Research Use Only

NETO2 Recombinant antibody, PBS Only (Capture)

Catalog Number: 84222-2-PBS



Basic Information

Catalog Number: 84222-2-PBS	GenBank Accession Number: BC012381	Purification Method: Protein A purification
Size: 100ug, Concentration: 1 mg/ml by Nanodrop;	GeneID (NCBI): 81831	CloneNo.: 241451E10
Source: Rabbit	UNIPROT ID: Q8NC67	
Isotype: IgG	Full Name: neuropilin (NRP) and tolloid (TLL)-like 2	
Immunogen Catalog Number: AG2971	Calculated MW: 525 aa, 59 kDa	
	Observed MW: 59 kDa	

Applications

Tested Applications:
WB, Cytometric bead array, Indirect ELISA

Species Specificity:
human, mouse, rat

Product Information

84222-2-PBS targets NETO2 as part of a matched antibody pair.

MP01159-2: 84222-2-PBS capture and 84222-4-PBS detection (validated in Cytometric bead array)

Unconjugated rabbit recombinant monoclonal antibody in PBS only (BSA and azide free) storage buffer at a concentration of 1 mg/mL, ready for conjugation. Created using Proteintech's proprietary in-house recombinant technology. Recombinant production enables unrivalled batch-to-batch consistency, easy scale-up, and future security of supply.

This conjugation ready format makes antibodies ideal for use in many applications including: ELISAs, multiplex assays requiring matched pairs, mass cytometry, and multiplex imaging applications. Antibody use should be optimized by the end user for each application and assay.

Background Information

Neuropilin and tolloid-like 2 (NETO2), a member of the subfamily of CUB domain and LDLa-containing proteins, was identified as an auxiliary protein of neuronal kainate receptors (KARs) and played critical roles in regulating the functions of KARs. It was also able to bind to the active oligomeric form of K⁺-Cl⁻ cotransporter (KCC2) to enhance its recycling in hippocampal neurons. Recently, elevated mRNA levels of NETO2 were detected in several types of tumors.

Storage

Storage:
Store at -80°C.
Storage Buffer:
PBS Only

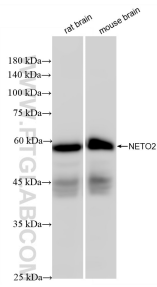
For technical support and original validation data for this product please contact:

T: 1 (888) 4PTGLAB (1-888-478-4522) (toll free
in USA), or 1(312) 455-8498 (outside USA)

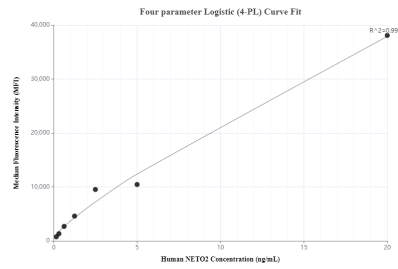
E: proteintech@ptglab.com
W: ptglab.com

This product is exclusively available under Proteintech Group brand and is not available to purchase from any other manufacturer.

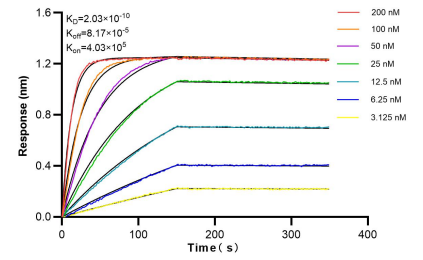
Selected Validation Data



Various lysates were subjected to SDS PAGE followed by western blot with 84222-2-RR (NETO2 antibody) at dilution of 1:5000 incubated at room temperature for 1.5 hours. This data was developed using the same antibody clone with 84222-2-PBS in a different storage buffer formulation.



Cytometric bead array standard curve of MP01159-2, NETO2 Recombinant Matched Antibody Pair, PBS Only. Capture antibody: 84222-2-PBS. Detection antibody: 84222-4-PBS. Standard: Ag2971. Range: 0.156-20 ng/mL.



Bi-layer interferometry (BLI) kinetic assays of 84222-2-RR against Human NETO2 were performed. The affinity constant is 0.203 nM.