

For Research Use Only

# KLHDC3 Recombinant antibody

Catalog Number: 84217-4-RR



## Basic Information

|  |  |   |
|--|--|---|
| <b>Catalog Number:</b><br>84217-4-RR                           | <b>GenBank Accession Number:</b><br>BC041793   | <b>Purification Method:</b><br>Protein A purification |
| <b>Size:</b><br>100ul , Concentration: 1000 µg/ml by Nanodrop; | <b>GeneID (NCBI):</b><br>116138                | <b>CloneNo.:</b><br>241475G5                          |
| <b>Source:</b><br>Rabbit                                       | <b>UNIPROT ID:</b><br>Q9BQ90                   | <b>Recommended Dilutions:</b><br>WB 1:5000-1:50000    |
| <b>Isotype:</b><br>IgG   | <b>Full Name:</b><br>kelch domain containing 3 |   |
| <b>Immunogen Catalog Number:</b><br>AG4879                     | <b>Calculated MW:</b><br>382 aa, 43 kDa        |   |
|  | <b>Observed MW:</b><br>43 kDa                  |   |

## Applications

**Tested Applications:**  
WB, FC (Intra), ELISA

**Species Specificity:**  
human, rat

### Positive Controls:

WB : NCI-H1299 cells, PC-3 cells, HepG2 cells, K-562 cells, HEK-293T cells, rat testis tissue

## Background Information

The Kelch domain-containing protein 3 (KLHDC3), also designated PEAS, contains 5 Kelch repeats and may be involved in meiotic recombination process. The gene encoding KLHDC3 maps to chromosome 6, which contains around 1,200 genes within 170 million base pairs of sequence. Deletion of a portion of the q arm of chromosome 6 is associated with early onset intestinal cancer suggesting the presence of a cancer susceptibility locus. Porphyria cutanea tarda, Parkinson's disease, Stickler syndrome, 21-hydroxylase deficiency and maple syrup urine disease are also associated with genes on chromosome 6. KLHDC3 protein is mainly expressed in cytoplasm, also found in meiotic chromatin.

## Storage

**Storage:**  
Store at -20°C. Stable for one year after shipment.

**Storage Buffer:**  
PBS with 0.02% sodium azide and 50% glycerol pH 7.3.

Aliquoting is unnecessary for -20°C storage

\*\*\* 20ul sizes contain 0.1% BSA

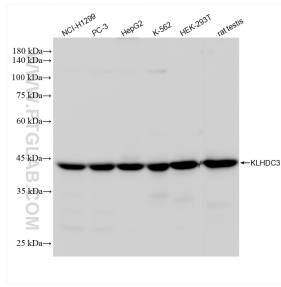
For technical support and original validation data for this product please contact:

T: 1 (888) 4PTGLAB (1-888-478-4522) (toll free in USA), or 1(312) 455-8498 (outside USA)

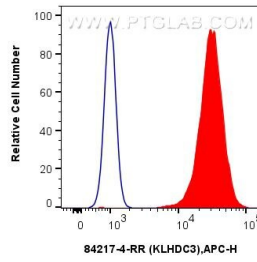
E: [proteintech@ptglab.com](mailto:proteintech@ptglab.com)  
W: [ptglab.com](http://ptglab.com)

This product is exclusively available under Proteintech Group brand and is not available to purchase from any other manufacturer.

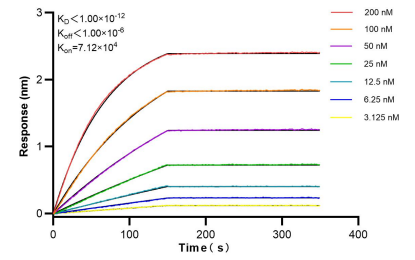
## Selected Validation Data



Various lysates were subjected to SDS PAGE followed by western blot with 84217-4-RR (KLHDC3 antibody) at dilution of 1:10000 incubated at room temperature for 1.5 hours.



1x10<sup>6</sup> PC-3 cells were intracellularly stained with 0.25 ug KLHDC3 Recombinant antibody (84217-4-RR, Clone:241475G5) and APC-Conjugated Goat Anti-Rabbit IgG(H+L)(red), or 0.25 ug Rabbit IgG Isotype Control Recombinant Antibody (98136-1-RR, Clone: 240953C9) (blue). Cells were fixed with 4% PFA and permeabilized with Flow Cytometry Perm Buffer (PF00011-C).



Biacore BLI kinetic assays of 84217-4-RR against Human KLHDC3 were performed. The affinity constant is below 1 pM.