

For Research Use Only

# KLHDC3 Recombinant antibody, PBS Only (Capture)

Catalog Number: 84217-4-PBS



## Basic Information

<b>Catalog Number:</b> 84217-4-PBS	<b>GenBank Accession Number:</b> BC041793	<b>Purification Method:</b> Protein A purification
<b>Size:</b> 100ug, Concentration: 1 mg/ml by Nanodrop;	<b>GeneID (NCBI):</b> 116138	<b>CloneNo.:</b> 241475G5
<b>Source:</b> Rabbit	<b>UNIPROT ID:</b> Q9BQ90	
<b>Isotype:</b> IgG	<b>Full Name:</b> kelch domain containing 3	
<b>Immunogen Catalog Number:</b> AG4879	<b>Calculated MW:</b> 382 aa, 43 kDa	
	<b>Observed MW:</b> 43 kDa	

## Applications

**Tested Applications:**  
WB, FC (Intra), Cytometric bead array, Indirect ELISA

**Species Specificity:**  
human, rat

## Product Information

84217-4-PBS targets KLHDC3 as part of a matched antibody pair:

MP01151-2: 84217-4-PBS capture and 84217-2-PBS detection (validated in Cytometric bead array)

MP01151-3: 84217-4-PBS capture and 84217-1-PBS detection (validated in Cytometric bead array)

Unconjugated rabbit recombinant monoclonal antibody in PBS only (BSA and azide free) storage buffer at a concentration of 1 mg/mL, ready for conjugation. Created using Proteintech's proprietary in-house recombinant technology. Recombinant production enables unrivalled batch-to-batch consistency, easy scale-up, and future security of supply.

This conjugation ready format makes antibodies ideal for use in many applications including: ELISAs, multiplex assays requiring matched pairs, mass cytometry, and multiplex imaging applications. Antibody use should be optimized by the end user for each application and assay.

## Background Information

The Kelch domain-containing protein 3 (KLHDC3), also designated PEAS, contains 5 Kelch repeats and may be involved in meiotic recombination process. The gene encoding KLHDC3 maps to chromosome 6, which contains around 1,200 genes within 170 million base pairs of sequence. Deletion of a portion of the q arm of chromosome 6 is associated with early onset intestinal cancer suggesting the presence of a cancer susceptibility locus. Porphyria cutanea tarda, Parkinson's disease, Stickler syndrome, 21-hydroxylase deficiency and maple syrup urine disease are also associated with genes on chromosome 6. KLHDC3 protein is mainly expressed in cytoplasm, also found in meiotic chromatin.

## Storage

**Storage:**  
Store at -80°C.  
**Storage Buffer:**  
PBS Only

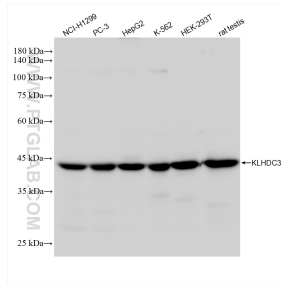
For technical support and original validation data for this product please contact:

T: 1 (888) 4PTGLAB (1-888-478-4522) (toll free in USA), or 1(312) 455-8498 (outside USA)

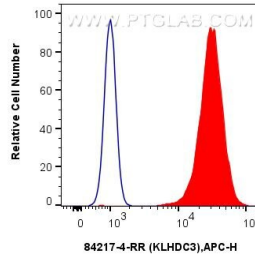
E: [proteintech@ptglab.com](mailto:proteintech@ptglab.com)  
W: [ptglab.com](http://ptglab.com)

**This product is exclusively available under Proteintech Group brand and is not available to purchase from any other manufacturer.**

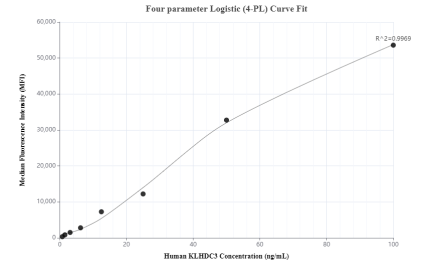
## Selected Validation Data



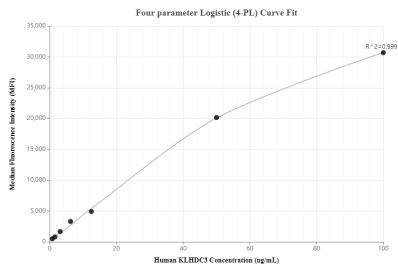
Various lysates were subjected to SDS PAGE followed by western blot with 84217-4-RR (KLHDC3 antibody) at dilution of 1:10000 incubated at room temperature for 1.5 hours. This data was developed using the same antibody clone with 84217-4-PBS in a different storage buffer formulation.



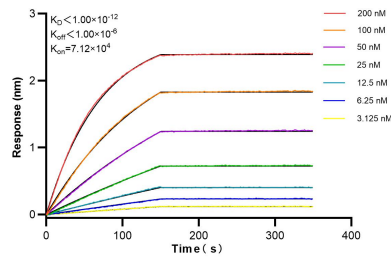
$1 \times 10^6$  PC-3 cells were intracellularly stained with 0.25 ug KLHDC3 Recombinant antibody (84217-4-RR, Clone:241475G5) and APC-Conjugated Goat Anti-Rabbit IgG(H+L)(red), or 0.25 ug Rabbit IgG Isotype Control Recombinant Antibody (98136-1-RR, Clone: 240953C9) (blue). Cells were fixed with 4% PFA and permeabilized with Flow Cytometry Perm Buffer (PF00011-C). This data was developed using the same antibody clone with 84217-4-PBS in a different storage buffer



Cytometric bead array standard curve of MP01151-2, KLHDC3 Recombinant Matched Antibody Pair, PBS Only. Capture antibody: 84217-4-PBS. Detection antibody: 84217-2-PBS. Standard: Ag4879. Range: 0.781-100 ng/mL



Cytometric bead array standard curve of MP01151-3, KLHDC3 Recombinant Matched Antibody Pair, PBS Only. Capture antibody: 84217-4-PBS. Detection antibody: 84217-1-PBS. Standard: Ag4879. Range: 0.781-100 ng/mL



Biolayer interferometry (BLI) kinetic assays of 84217-4-RR against Human KLHDC3 were performed. The affinity constant is below 1 pM.