

For Research Use Only

# CD3 Delta Recombinant antibody, PBS Only (Detector)

Catalog Number: 84214-4-PBS



## Basic Information

<b>Catalog Number:</b> 84214-4-PBS	<b>GenBank Accession Number:</b> BC070321	<b>Purification Method:</b> Protein A purification
<b>Size:</b> 100ug, Concentration: 1 mg/ml by Nanodrop;	<b>GeneID (NCBI):</b> 915	<b>CloneNo.:</b> 241523H2
<b>Source:</b> Rabbit	<b>UNIPROT ID:</b> P04234	
<b>Isotype:</b> IgG	<b>Full Name:</b> CD3d molecule, delta (CD3-TCR complex)	
<b>Immunogen Catalog Number:</b> EG2288	<b>Calculated MW:</b> 171 aa, 19 kDa	
	<b>Observed MW:</b> 20-25 kDa	

## Applications

**Tested Applications:**  
WB, IHC, IF-P, Cytometric bead array, Indirect ELISA

**Species Specificity:**  
human

## Product Information

84214-4-PBS targets CD3 Delta as part of a matched antibody pair:

MP01149-2: 84214-1-PBS capture and 84214-4-PBS detection (validated in Cytometric bead array)

Unconjugated rabbit recombinant monoclonal antibody in PBS only (BSA and azide free) storage buffer at a concentration of 1 mg/mL, ready for conjugation. Created using Proteintech's proprietary in-house recombinant technology. Recombinant production enables unrivalled batch-to-batch consistency, easy scale-up, and future security of supply.

This conjugation ready format makes antibodies ideal for use in many applications including: ELISAs, multiplex assays requiring matched pairs, mass cytometry, and multiplex imaging applications. Antibody use should be optimized by the end user for each application and assay.

## Background Information

CD3 is a complex of proteins that directly associates with the T cell receptor (TCR). The TCR/CD3 complex of T-lymphocytes consists of either a TCR alpha/beta or TCR gamma/delta heterodimer coexpressed at the cell surface with the invariant subunits of CD3 labeled gamma, delta, epsilon, zeta, and eta. The TCR recognizes antigens bound to major histocompatibility complex (MHC) molecules. TCR-mediated peptide-MHC recognition is transmitted to the CD3 complex, leading to the intracellular signal transduction. CD3 is considered to be a pan-T cell marker for detection of normal and neoplastic T cells. CD3 delta/CD3D is a single-pass type I membrane protein which consists of an extracellular domain of 84 amino acids, a transmembrane region, and a cytoplasmic domain of 45 amino acids. Defects in CD3 delta are a cause of severe combined immunodeficiency.

## Storage

**Storage:**  
Store at -80°C.

**Storage Buffer:**  
PBS Only

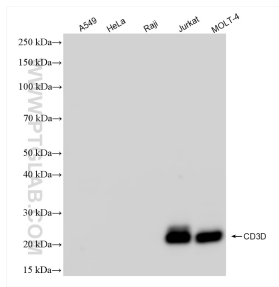
For technical support and original validation data for this product please contact:

T: 1 (888) 4PTGLAB (1-888-478-4522) (toll free in USA), or 1(312) 455-8498 (outside USA)

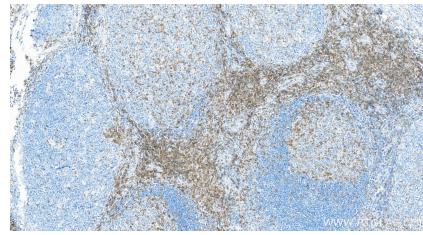
E: [proteintech@ptglab.com](mailto:proteintech@ptglab.com)  
W: [ptglab.com](http://ptglab.com)

**This product is exclusively available under Proteintech Group brand and is not available to purchase from any other manufacturer.**

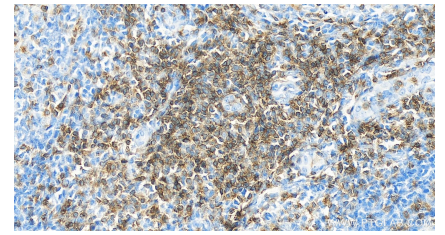
## Selected Validation Data



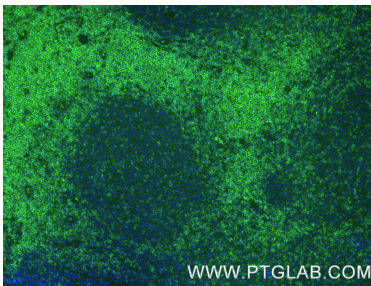
Various lysates were subjected to SDS PAGE followed by western blot with 84214-4-RR (CD3 Delta antibody) at dilution of 1:10000 incubated at room temperature for 1.5 hours. This data was developed using the same antibody clone with 84214-4-PBS in a different storage buffer formulation.



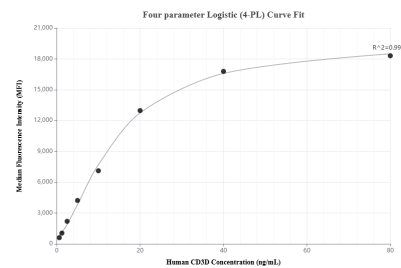
Immunohistochemical analysis of paraffin-embedded human tonsillitis tissue slide using 84214-4-RR (CD3 Delta antibody) at dilution of 1:1000 (under 10x lens). Heat mediated antigen retrieval with Tris-EDTA buffer (pH 9.0). This data was developed using the same antibody clone with 84214-4-PBS in a different storage buffer formulation.



Immunohistochemical analysis of paraffin-embedded human tonsillitis tissue slide using 84214-4-RR (CD3 Delta antibody) at dilution of 1:1000 (under 40x lens). Heat mediated antigen retrieval with Tris-EDTA buffer (pH 9.0). This data was developed using the same antibody clone with 84214-4-PBS in a different storage buffer formulation.



Immunofluorescent analysis of (4% PFA) fixed paraffin-embedded human tonsillitis tissue using CD3 Delta antibody (84214-4-RR, Clone: 241523H2) at dilution of 1:400 and CoraLite@488-Conjugated Goat Anti-Rabbit IgG(H+L) (SA00013-2). Heat mediated antigen retrieval with Tris-EDTA buffer (pH 9.0). This data was developed using the same antibody clone with 84214-4-PBS in a different storage buffer formulation.



Cytometric bead array standard curve of MP01149-2, CD3D Recombinant Matched Antibody Pair, PBS Only. Capture antibody: 84214-1-PBS. Detection antibody: 84214-4-PBS. Standard: Eg2288. Range: 0.625-80 ng/mL