

For Research Use Only

# METTL6 Recombinant antibody

Catalog Number:84209-5-RR



## Basic Information

<b>Catalog Number:</b> 84209-5-RR	<b>GenBank Accession Number:</b> BC022400	<b>Purification Method:</b> Protein A purification
<b>Size:</b> 100ul , Concentration: 1000 µg/ml by Nanodrop;	<b>GeneID (NCBI):</b> 131965	<b>CloneNo.:</b> 241482F9
<b>Source:</b> Rabbit	<b>UNIPROT ID:</b> Q8TCB7	<b>Recommended Dilutions:</b> IF/ICC 1:125-1:500
<b>Isotype:</b> IgG	<b>Full Name:</b> methyltransferase like 6	
<b>Immunogen Catalog Number:</b> AG9714	<b>Calculated MW:</b> 255 aa, 30 kDa	

## Applications

<b>Tested Applications:</b> IF/ICC, ELISA	<b>Positive Controls:</b> IF/ICC : HeLa cells,
<b>Species Specificity:</b> human	

## Background Information

Methyltransferase-like protein 6 (METTL6) belongs to the METL family. METTL6 is as a crucial regulator of tumor cell growth, and METTL6 is a bona fide transfer RNA (tRNA) methyltransferase, catalyzing the formation of 3-methylcytidine at C32 of specific serine tRNA isoacceptors (PMID:32923617). METTL6 is a member of the RNA methyltransferase family that has been identified in many cancers. The mRNA expression levels of METTL6 were significantly upregulated in HCC tumor tissues compared to that in adjacent nontumor tissues. CRISPR/Cas9mediated knockout of METTL6 in hepatocellular carcinoma cell lines remarkably inhibited colony formation, cell proliferation, cell migration, cell invasion and cell attachment ability (PMID:34913069).

## Storage

**Storage:**  
Store at -20°C. Stable for one year after shipment.  
**Storage Buffer:**  
PBS with 0.02% sodium azide and 50% glycerol pH 7.3.  
Aliquoting is unnecessary for -20°C storage

\*\*\* 20ul sizes contain 0.1% BSA

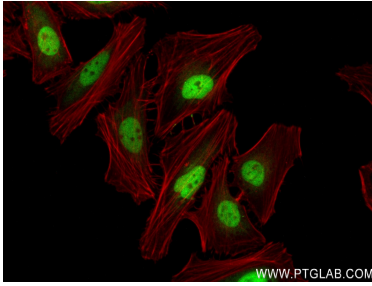
For technical support and original validation data for this product please contact:

T: 1 (888) 4PTGLAB (1-888-478-4522) (toll free  
in USA), or 1(312) 455-8498 (outside USA)

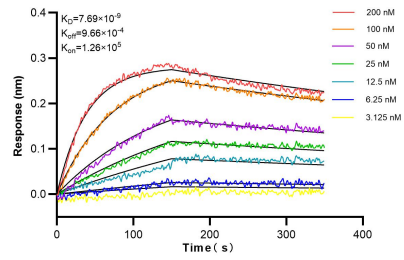
E: [proteintech@ptglab.com](mailto:proteintech@ptglab.com)  
W: [ptglab.com](http://ptglab.com)

This product is exclusively available under Proteintech Group brand and is not available to purchase from any other manufacturer.

## Selected Validation Data



Immunofluorescent analysis of (4% PFA) fixed HeLa cells using METTL6 antibody (84209-5-RR, Clone: 241482F9) at dilution of 1:250 and CoraLite®488-Conjugated Goat Anti-Rabbit IgG(H+L) (SA00013-2), CL594-Phalloidin (red).



Biolayer interferometry (BLI) kinetic assays of 84209-5-RR against Human METTL6 were performed. The affinity constant is 7.69 nM.