

For Research Use Only

FGFR2 Recombinant antibody, PBS Only (Capture/Detector)

Catalog Number: 84205-2-PBS



Basic Information

Catalog Number: 84205-2-PBS	GenBank Accession Number: NM_000141.4	Purification Method: Protein A purification
Size: 100ug, Concentration: 1 mg/ml by Nanodrop;	GeneID (NCBI): 2263	CloneNo.: 241383B5
Source: Rabbit	UNIPROT ID: P21802	
Isotype: IgG	Full Name: fibroblast growth factor receptor 2	
	Calculated MW: 92kd	

Applications

Tested Applications:
Cytometric bead array, Sandwich ELISA, Indirect ELISA,
Sample test

Species Specificity:
human

Product Information

84205-2-PBS targets FGFR2 as part of a matched antibody pair.

MP01128-2: 84205-1-PBS capture and 84205-2-PBS detection (validated in Cytometric bead array, Sandwich ELISA)

MP01128-3: 84205-2-PBS capture and 84205-4-PBS detection (validated in Cytometric bead array)

Unconjugated rabbit recombinant monoclonal antibody in PBS only (BSA and azide free) storage buffer at a concentration of 1 mg/mL, ready for conjugation. Created using Proteintech's proprietary in-house recombinant technology. Recombinant production enables unrivalled batch-to-batch consistency, easy scale-up, and future security of supply.

This conjugation ready format makes antibodies ideal for use in many applications including: ELISAs, multiplex assays requiring matched pairs, mass cytometry, and multiplex imaging applications. Antibody use should be optimized by the end user for each application and assay.

Storage

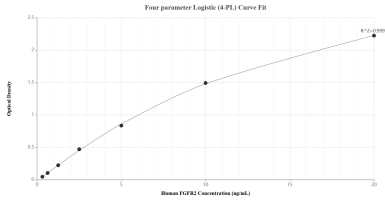
Storage:
Store at -80°C.

Storage Buffer:
PBS Only

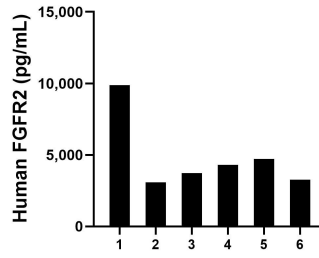
For technical support and original validation data for this product please contact:
T: 1 (888) 4PTGLAB (1-888-478-4522) (toll free in USA), or 1(312) 455-8498 (outside USA) E: proteintech@ptglab.com
W: ptglab.com

This product is exclusively available under Proteintech Group brand and is not available to purchase from any other manufacturer.

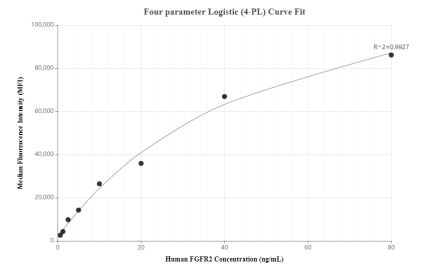
Selected Validation Data



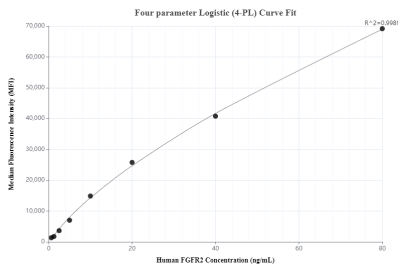
Sandwich ELISA standard curve of MP01128-2, Human FGFR2 Recombinant Matched Antibody Pair - PBS only. 84205-1-PBS was coated to a plate as the capture antibody and incubated with serial dilutions of standard Eg1265. 84205-2-PBS was HRP conjugated as the detection antibody. Range: 0.313-20 ng/mL



Serum of six individual healthy human donors was measured. The FGFR2 concentration of detected samples was determined to be 4,832.03 pg/mL with a range of 3,076.26-9,887.31 pg/mL



Cytometric bead array standard curve of MP01128-2, FGFR2 Recombinant Matched Antibody Pair, PBS Only. Capture antibody: 84205-1-PBS. Detection antibody: 84205-2-PBS. Standard: Eg1265. Range: 0.625-80 ng/mL



Cytometric bead array standard curve of MP01128-3, FGFR2 Recombinant Matched Antibody Pair, PBS Only. Capture antibody: 84205-2-PBS. Detection antibody: 84205-4-PBS. Standard: Eg1265. Range: 0.625-80 ng/mL