

For Research Use Only

MRPS18A Recombinant antibody

Catalog Number: 84201-1-RR

Featured Product



Basic Information

Catalog Number:

84201-1-RR

Size:

100ul, Concentration: 1000 µg/ml by Nanodrop;

Source:

Rabbit

Isotype:

IgG

Immunogen Catalog Number:

AG9011

GenBank Accession Number:

BC010364

GeneID (NCBI):

55168

UNIPROT ID:

Q9NVS2

Full Name:

mitochondrial ribosomal protein

S18A

Calculated MW:

196 aa, 22 kDa

Observed MW:

15 kDa

Purification Method:

Protein A purification

CloneNo.:

240850C3

Recommended Dilutions:

WB 1:5000-1:50000

Applications

Tested Applications:

WB, ELISA

Species Specificity:

human

Positive Controls:

WB : HepG2 cells, A549 cells, HeLa cells, L02 cells, MCF-7 cells

Background Information

MRPS18A (Mitochondrial Ribosomal Protein S18A) is a protein coding gene. It encodes a 28S subunit protein that belongs to the ribosomal protein S18P family. The increased expression of MRPS18A in cancer cells is explained by the increased energy metabolism of cancer cells and may pave the way for new diagnostic and therapeutic avenues to be explored (PMID: 28056857).

Storage

Storage:

Store at -20°C. Stable for one year after shipment.

Storage Buffer:

PBS with 0.02% sodium azide and 50% glycerol pH 7.3.

Aliquoting is unnecessary for -20°C storage

*** 20ul sizes contain 0.1% BSA

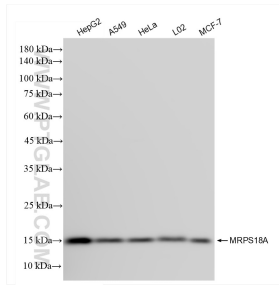
For technical support and original validation data for this product please contact:

T: 1 (888) 4PTGLAB (1-888-478-4522) (toll free in USA), or 1(312) 455-8498 (outside USA)

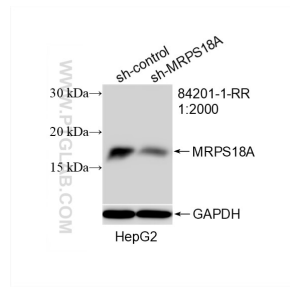
E: proteintech@ptglab.com
W: ptglab.com

This product is exclusively available under Proteintech Group brand and is not available to purchase from any other manufacturer.

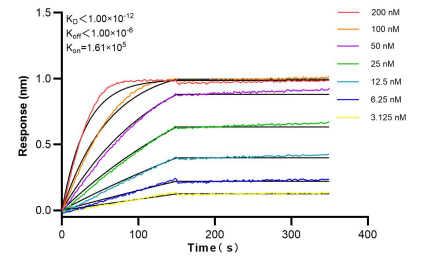
Selected Validation Data



Various lysates were subjected to SDS PAGE followed by western blot with 84201-1-RR (MRPS18A antibody) at dilution of 1:15000 incubated at room temperature for 1.5 hours.



WB result of MRPS18A antibody (84201-1-RR; 1:2000; incubated at room temperature for 1.5 hours) with sh-Control and sh-MRPS18A transfected HepG2 cells.



Bi-layer interferometry (BLI) kinetic assays of 84201-1-RR against Human MRPS18A were performed. The affinity constant is below 1 pM.