

For Research Use Only

# Geminin Recombinant antibody, PBS Only

Catalog Number: 84199-2-PBS



## Basic Information

<b>Catalog Number:</b> 84199-2-PBS	<b>GenBank Accession Number:</b> BC005185	<b>Purification Method:</b> Protein A purification
<b>Size:</b> 100ug, Concentration: 1 mg/ml by Nanodrop;	<b>GeneID (NCBI):</b> 51053	<b>CloneNo.:</b> 240835B5
<b>Source:</b> Rabbit	<b>UNIPROT ID:</b> O75496	
<b>Isotype:</b> IgG	<b>Full Name:</b> geminin, DNA replication inhibitor	
<b>Immunogen Catalog Number:</b> AG1076	<b>Calculated MW:</b> 24 kDa	
	<b>Observed MW:</b> 28-29 kDa	

## Applications

**Tested Applications:**  
WB, IHC, IF/ICC, Indirect ELISA

**Species Specificity:**  
human

## Background Information

GMNN, also designated geminin, contains 212 amino acids and has a destruction box sequence (RRTLKVIQP). GMNN participates in inhibiting DNA replication by preventing the incorporation of MCM complex into the pre-replication complex (pre-RC). It is degraded during the metaphase-anaphase transition of cell cycle's mitotic phase, which permits replication in the succeeding cell cycle. GMNN has a broad sedimentation profile ranging from about 25 kDa to 90 kDa, with a major peak at 30 kDa. Scanning of the signals shows that discrete peaks corresponding to the apparent mass of 42.5 kDa and 66 kDa are present. The dimer of geminin(50 kDa) can also be detected. (PMID: 15313623)

## Storage

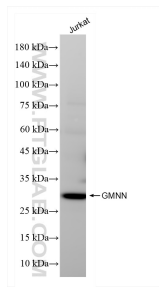
**Storage:**  
Store at -80°C.

**Storage Buffer:**  
PBS Only

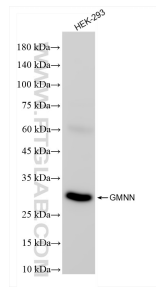
For technical support and original validation data for this product please contact:  
T: 1 (888) 4PTGLAB (1-888-478-4522) (toll free in USA), or 1(312) 455-8498 (outside USA)      E: proteintech@ptglab.com  
W: ptglab.com

This product is exclusively available under Proteintech Group brand and is not available to purchase from any other manufacturer.

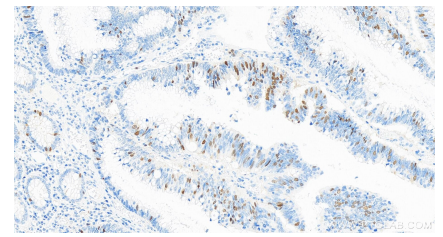
## Selected Validation Data



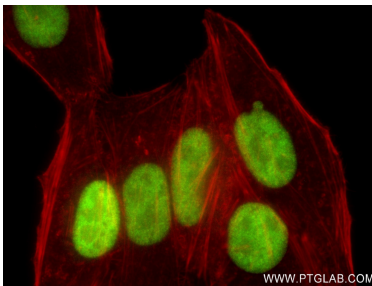
Jurkat cells were subjected to SDS PAGE followed by western blot with 84199-2-RR (GMNN antibody) at dilution of 1:1000 incubated at room temperature for 1.5 hours. This data was developed using the same antibody clone with 84199-2-PBS in a different storage buffer formulation.



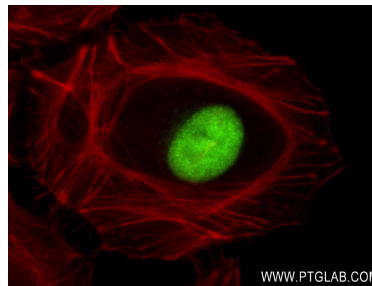
HEK-293 cells were subjected to SDS PAGE followed by western blot with 84199-2-RR (GMNN antibody) at dilution of 1:1000 incubated at room temperature for 1.5 hours. This data was developed using the same antibody clone with 84199-2-PBS in a different storage buffer formulation.



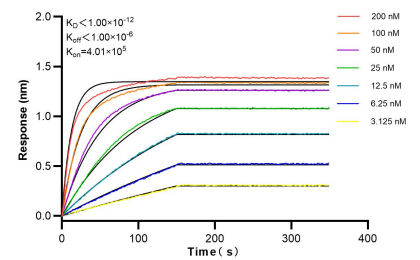
Immunohistochemical analysis of paraffin-embedded human colon cancer tissue slide using 84199-2-RR (Geminin antibody) at dilution of 1:500 (under 20x lens). Heat mediated antigen retrieval with Tris-EDTA buffer (pH 9.0). This data was developed using the same antibody clone with 84199-2-PBS in a different storage buffer formulation.



Immunofluorescent analysis of (4% PFA) fixed HepG2 cells using Geminin antibody (84199-2-RR, Clone: 240835B5) at dilution of 1:200 and CoraLite®488-Conjugated AffiniPure Goat Anti-Rabbit IgG(H+L) (SA00013-2), CL594-Phalloidin (red). This data was developed using the same antibody clone with 84199-2-PBS in a different storage buffer formulation.



Immunofluorescent analysis of (4% PFA) fixed HeLa cells using Geminin antibody (84199-2-RR, Clone: 240835B5) at dilution of 1:200 and CoraLite®488-Conjugated AffiniPure Goat Anti-Rabbit IgG(H+L) (SA00013-2), CL594-Phalloidin (red). This data was developed using the same antibody clone with 84199-2-PBS in a different storage buffer formulation.



Bi-layer interferometry (BLI) kinetic assays of 84199-2-RR against Human Geminin were performed. The affinity constant is below 1 pM.