

For Research Use Only

LDHA-Specific Recombinant antibody

Catalog Number: 84198-2-RR

Featured Product



Basic Information

Catalog Number:

84198-2-RR

Size:

100ul, Concentration: 1000 µg/ml by

Nanodrop;

Source:

Rabbit

Isotype:

IgG

GenBank Accession Number:

NM_005566

GeneID (NCBI):

3939

UNIPROT ID:

P00338

Full Name:

lactate dehydrogenase A

Calculated MW:

37 kDa

Observed MW:

35 kDa

Purification Method:

Protein A purification

CloneNo.:

240885A9

Recommended Dilutions:

WB 1:5000-1:50000

Applications

Tested Applications:

WB, FC (Intra), ELISA

Species Specificity:

human, mouse, rat

Positive Controls:

WB : HeLa cells, MDA-MB-231 cells, HEK-293 cells, Jurkat cells, NIH/3T3 cells, mouse skeletal muscle tissue, rat skeletal muscle tissue

Background Information

LDHA, also named as LDH-M and NY-REN-59, is an enzyme which catalyzes the inter-conversion of pyruvate and L-lactate with concomitant inter-conversion of NADH and NAD⁺. LDHA is found in most somatic tissues, though predominantly in muscle tissue and tumours, and belongs to the lactate dehydrogenase family. It has long been known that many human cancers have higher LDHA levels compared to normal tissues. It has also been shown that LDHA plays an important role in the development, invasion and metastasis of malignancies.

Storage

Storage:

Store at -20°C. Stable for one year after shipment.

Storage Buffer:

PBS with 0.02% sodium azide and 50% glycerol pH 7.3.

Aliquoting is unnecessary for -20°C storage

*** 20ul sizes contain 0.1% BSA

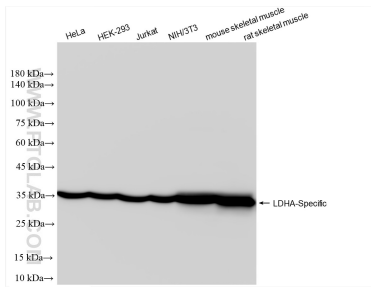
For technical support and original validation data for this product please contact:

T: 1 (888) 4PTGLAB (1-888-478-4522) (toll free in USA), or 1(312) 455-8498 (outside USA)

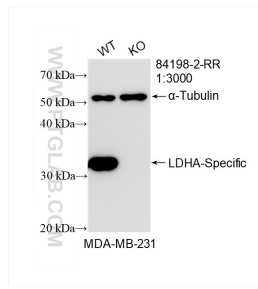
E: proteintech@ptglab.com
W: ptglab.com

This product is exclusively available under Proteintech Group brand and is not available to purchase from any other manufacturer.

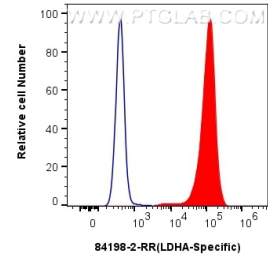
Selected Validation Data



Various lysates were subjected to SDS PAGE followed by western blot with 84198-2-RR (LDHA-Specific antibody) at dilution of 1:10000 incubated at room temperature for 1.5 hours.



WB result of LDHA-Specific antibody (84198-2-RR; 1:3000; room temperature for 1.5 hours) with wild-type and LDHA knockout MDA-MB-231 cells.



1x10⁶ HepG2 cells were intracellularly stained with 0.25 ug LDHA-Specific Recombinant antibody (84198-2-RR, Clone:240885A9) and APC-Conjugated AffiniPure Goat Anti-Rabbit IgG(H+L) (red), or 0.25 ug Isotype Control (blue). Cells were fixed with 4% PFA and permeabilized with Flow Cytometry Perm Buffer (PF00011-C).