

For Research Use Only

LDHA-Specific Recombinant antibody

Catalog Number: 84198-1-RR

Featured Product



Basic Information

Catalog Number: 84198-1-RR	GenBank Accession Number: NM_005566	Purification Method: Protein A purification
Size: 100ul , Concentration: 1000 µg/ml by Nanodrop;	GeneID (NCBI): 3939	CloneNo.: 240885F4
Source: Rabbit	UNIPROT ID: P00338	Recommended Dilutions: WB 1:500-1:2000 IF/ICC 1:125-1:500
Isotype: IgG	Full Name: lactate dehydrogenase A	
	Calculated MW: 37 kDa	

Applications

Tested Applications: WB, IF/ICC, ELISA	Positive Controls: WB : MDA-MB-231 cells, IF/ICC : HepG2 cells,
Species Specificity: human	

Background Information

LDHA, also named as LDH-M and NY-REN-59, is an enzyme which catalyzes the inter-conversion of pyruvate and L-lactate with concomitant inter-conversion of NADH and NAD⁺. LDHA is found in most somatic tissues, though predominantly in muscle tissue and tumours, and belongs to the lactate dehydrogenase family. It has long been known that many human cancers have higher LDHA levels compared to normal tissues. It has also been shown that LDHA plays an important role in the development, invasion and metastasis of malignancies.

Storage

Storage:
Store at -20°C. Stable for one year after shipment.
Storage Buffer:
PBS with 0.02% sodium azide and 50% glycerol pH 7.3.
Aliquoting is unnecessary for -20°C storage

*** 20ul sizes contain 0.1% BSA

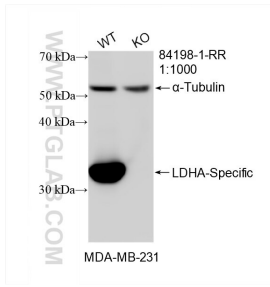
For technical support and original validation data for this product please contact:

T: 1 (888) 4PTGLAB (1-888-478-4522) (toll free in USA), or 1(312) 455-8498 (outside USA)

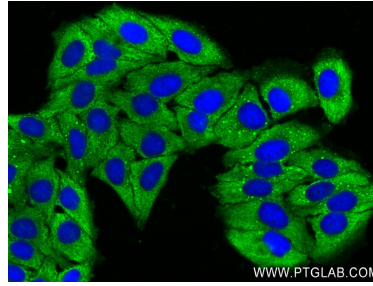
E: proteintech@ptglab.com
W: ptglab.com

This product is exclusively available under Proteintech Group brand and is not available to purchase from any other manufacturer.

Selected Validation Data



WB result of LDHA-Specific antibody (84198-1-RR; 1:1000; room temperature for 1.5 hours) with wild-type and LDHA knockout MDA-MB-231 cells.



Immunofluorescent analysis of (-20°C Ethanol) fixed HepG2 cells using LDHA-Specific antibody (84198-1-RR, Clone: 240885F4) at dilution of 1:250 and CoraLite®488-Conjugated AffiniPure Goat Anti-Rabbit IgG(H+L) (SA00013-2).