

For Research Use Only

LDHA-Specific Recombinant antibody, PBS Only

Catalog Number: 84198-1-PBS

Featured Product



Basic Information

Catalog Number:

84198-1-PBS

Size:

100ug, Concentration: 1 mg/ml by
Nanodrop;

Source:

Rabbit

Isotype:

IgG

GenBank Accession Number:

NM_005566

GeneID (NCBI):

3939

UNIPROT ID:

P00338

Full Name:

lactate dehydrogenase A

Calculated MW:

37 kDa

Purification Method:

Protein A purification

CloneNo.:

240885F4

Recommended Dilutions:

IF/ICC 1:125-1:500

Applications

Tested Applications:

WB, IF/ICC, Indirect ELISA

Species Specificity:

human

Positive Controls:

IF/ICC : HepG2 cells,

Background Information

LDHA, also named as LDH-M and NY-REN-59, is an enzyme which catalyzes the inter-conversion of pyruvate and L-lactate with concomitant inter-conversion of NADH and NAD⁺. LDHA is found in most somatic tissues, though predominantly in muscle tissue and tumours, and belongs to the lactate dehydrogenase family. It has long been known that many human cancers have higher LDHA levels compared to normal tissues. It has also been shown that LDHA plays an important role in the development, invasion and metastasis of malignancies.

Storage

Storage:

Store at -80°C.

Storage Buffer:

PBS Only

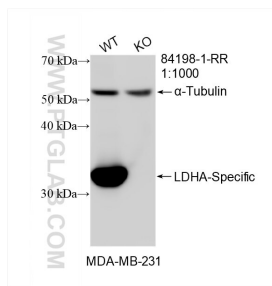
For technical support and original validation data for this product please contact:

T: 1 (888) 4PTGLAB (1-888-478-4522) (toll free
in USA), or 1(312) 455-8498 (outside USA)

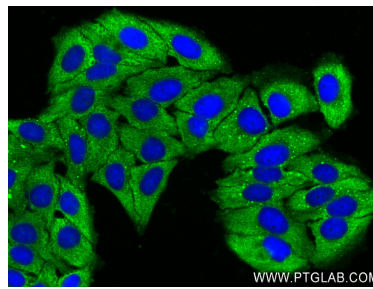
E: proteintech@ptglab.com
W: ptglab.com

This product is exclusively available under Proteintech Group brand and is not available to purchase from any other manufacturer.

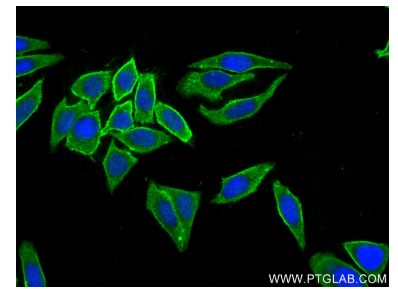
Selected Validation Data



WB result of LDHA-Specific antibody (84198-1-RR; 1:1000; room temperature for 1.5 hours) with wild-type and LDHA knockout MDA-MB-231 cells. This data was developed using the same antibody clone with 84198-1-PBS in a different storage buffer formulation.



Immunofluorescent analysis of (-20°C Ethanol) fixed HepG2 cells using LDHA-Specific antibody (84198-1-RR, Clone: 240885F4) at dilution of 1:250 and CoraLite@488-Conjugated AffiniPure Goat Anti-Rabbit IgG(H+L) (SA00013-2). This data was developed using the same antibody clone with 84198-1-PBS in a different storage buffer formulation.



Immunofluorescent analysis of (-20°C Ethanol) fixed HepG2 cells using LDHA-Specific antibody (84198-1-PBS, Clone: 240885F4) at dilution of 1:250 and CoraLite@488-Conjugated Goat Anti-Rabbit IgG(H+L) (SA00013-2).