

For Research Use Only

# TMEM106B Recombinant antibody

Catalog Number: 84196-1-RR



## Basic Information

<b>Catalog Number:</b> 84196-1-RR	<b>GenBank Accession Number:</b> BC033901	<b>Purification Method:</b> Protein A purification
<b>Size:</b> 100ul , Concentration: 1000 µg/ml by Nanodrop;	<b>GeneID (NCBI):</b> 54664	<b>CloneNo.:</b> 241185F1
<b>Source:</b> Rabbit	<b>UNIPROT ID:</b> Q9NUM4	<b>Recommended Dilutions:</b> WB 1:5000-1:50000
<b>Isotype:</b> IgG	<b>Full Name:</b> transmembrane protein 106B	
	<b>Calculated MW:</b> 31 kDa	
	<b>Observed MW:</b> 75 kDa	

## Applications

<b>Tested Applications:</b> WB, ELISA	<b>Positive Controls:</b> WB : HeLa cells, HEK-293 cells, A549 cells, K-562 cells
<b>Species Specificity:</b> human	

## Background Information

TMEM106B is a genetic risk factor for frontotemporal lobar degeneration with TDP-43 inclusions (FTLD-TDP). Amyotrophic lateral sclerosis (ALS), like FTLD-TDP, is characterized by pathological TDP-43 inclusions. TMEM106B expression in the brain may be linked to mechanisms of disease in FTLD-TDP and risk alleles confer genetic susceptibility by increasing gene expression. TMEM106B can be showed as 31-55 kDa and 70-90 kDa (Glycosylated or Dimer) form in western blot test. (PMID: 27543298, 22895706, PMID: 23136129).

## Storage

**Storage:**  
Store at -20°C. Stable for one year after shipment.  
**Storage Buffer:**  
PBS with 0.02% sodium azide and 50% glycerol pH 7.3.  
Aliquoting is unnecessary for -20°C storage

\*\*\* 20ul sizes contain 0.1% BSA

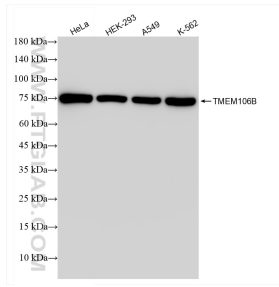
For technical support and original validation data for this product please contact:

T: 1 (888) 4PTGLAB (1-888-478-4522) (toll free in USA), or 1(312) 455-8498 (outside USA)

E: proteintech@ptglab.com  
W: ptglab.com

This product is exclusively available under Proteintech Group brand and is not available to purchase from any other manufacturer.

## Selected Validation Data



Various lysates were subjected to SDS PAGE followed by western blot with 84196-1-RR (TMEM106B antibody) at dilution of 1:10000 incubated at room temperature for 1.5 hours.