

For Research Use Only

ATAD1 Recombinant antibody

Catalog Number:84194-6-RR



Basic Information

Catalog Number: 84194-6-RR	GenBank Accession Number: BC010868	Purification Method: Protein A purification
Size: 100ul , Concentration: 1000 µg/ml by Nanodrop;	GeneID (NCBI): 84896	CloneNo.: 241449D12
Source: Rabbit	UNIPROT ID: Q8NBU5	Recommended Dilutions: WB 1:5000-1:50000 IF/ICC 1:250-1:1000
Isotype: IgG	Full Name: ATPase family, AAA domain containing 1	
Immunogen Catalog Number: AG10343	Calculated MW: 361 aa, 41 kDa	
	Observed MW: 32-37 kDa	

Applications

Tested Applications:
WB, IF/ICC, FC (Intra), ELISA

Species Specificity:
human, mouse, rat

Positive Controls:

WB : LNCaP cells, A549 cells, Jurkat cells, HeLa cells, HepG2 cells, mouse brain tissue, rat brain tissue

IF/ICC : HeLa cells,

Background Information

The mitochondrial AAA (ATPase Associated with diverse cellular Activities) protein ATAD1 (in humans; Msp1 in yeast) removes mislocalized membrane proteins, as well as stuck import substrates from the mitochondrial outer membrane, facilitating their re-insertion into their cognate organelles and maintaining mitochondria's protein import capacity.

Storage

Storage:
Store at -20°C. Stable for one year after shipment.

Storage Buffer:
PBS with 0.02% sodium azide and 50% glycerol pH 7.3.

Aliquoting is unnecessary for -20°C storage

*** 20ul sizes contain 0.1% BSA

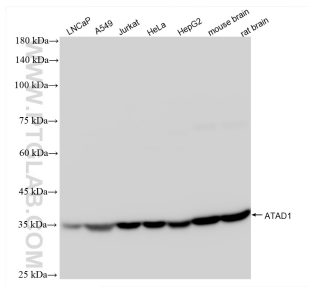
For technical support and original validation data for this product please contact:

T: 1 (888) 4PTGLAB (1-888-478-4522) (toll free in USA), or 1(312) 455-8498 (outside USA)

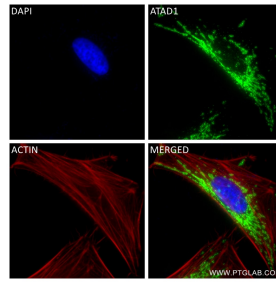
E: proteintech@ptglab.com
W: ptglab.com

This product is exclusively available under Proteintech Group brand and is not available to purchase from any other manufacturer.

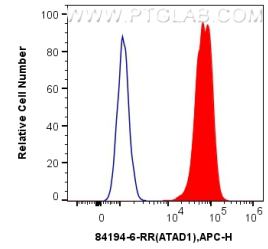
Selected Validation Data



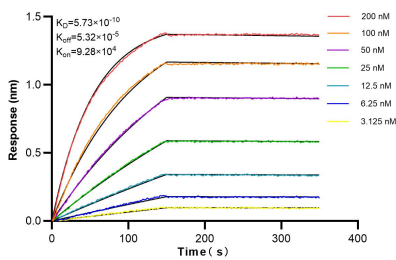
Various lysates were subjected to SDS PAGE followed by western blot with 84194-6-RR (ATAD1 antibody) at dilution of 1:10000 incubated at room temperature for 1.5 hours.



Immunofluorescent analysis of (4% PFA) fixed HeLa cells using ATAD1 antibody (84194-6-RR, Clone: 241449D12) at dilution of 1:500 and CoraLite®488-Conjugated Goat Anti-Rabbit IgG(H+L) (SA00013-2), CL594-Phalloidin (red).



1x10⁶ A431 cells were intracellularly stained with 0.25 ug ATAD1 Recombinant antibody (84194-6-RR, Clone:241449D12) and APC-Conjugated Goat Anti-Rabbit IgG(H+L)(red), or 0.25 ug Isotype Control (blue). Cells were fixed with 4% PFA and permeabilized with Flow Cytometry Perm Buffer (PF00011-C).



Biolayer interferometry (BLI) kinetic assays of 84194-6-RR against Human ATAD1 were performed. The affinity constant is 0.573 nM.