

For Research Use Only

ATAD1 Recombinant antibody, PBS Only

Catalog Number: 84194-6-PBS



Basic Information

Catalog Number: 84194-6-PBS	GenBank Accession Number: BC010868	Purification Method: Protein A purification
Size: 100ug , Concentration: 1 mg/ml by Nanodrop;	GeneID (NCBI): 84896	CloneNo.: 241449D12
Source: Rabbit	UNIPROT ID: Q8NBU5	
Isotype: IgG	Full Name: ATPase family, AAA domain containing 1	
Immunogen Catalog Number: AG10343	Calculated MW: 361 aa, 41 kDa	
	Observed MW: 32-37 kDa	

Applications

Tested Applications:
WB, IF/ICC, FC (Intra), Indirect ELISA

Species Specificity:
human, mouse, rat

Background Information

The mitochondrial AAA (ATPase Associated with diverse cellular Activities) protein ATAD1 (in humans; Msp1 in yeast) removes mislocalized membrane proteins, as well as stuck import substrates from the mitochondrial outer membrane, facilitating their re-insertion into their cognate organelles and maintaining mitochondria's protein import capacity.

Storage

Storage:
Store at -80°C.
Storage Buffer:
PBS Only

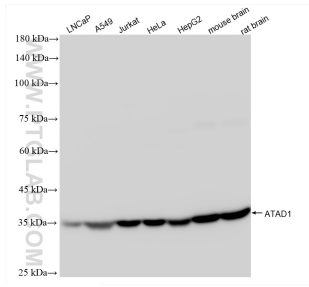
For technical support and original validation data for this product please contact:

T: 1 (888) 4PTGLAB (1-888-478-4522) (toll free in USA), or 1(312) 455-8498 (outside USA)

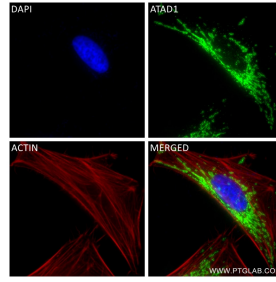
E: proteintech@ptglab.com
W: ptglab.com

This product is exclusively available under Proteintech Group brand and is not available to purchase from any other manufacturer.

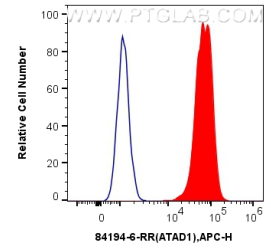
Selected Validation Data



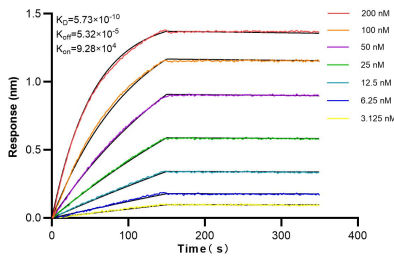
Various lysates were subjected to SDS PAGE followed by western blot with 84194-6-RR (ATAD1 antibody) at dilution of 1:10000 incubated at room temperature for 1.5 hours. This data was developed using the same antibody clone with 84194-6-PBS in a different storage buffer formulation.



Immunofluorescent analysis of (4% PFA) fixed HeLa cells using ATAD1 antibody (84194-6-RR, Clone: 241449D12) at dilution of 1:500 and CoraLite®488-Conjugated Goat Anti-Rabbit IgG(H+L) (SA00013-2), CL594-Phalloidin (red). This data was developed using the same antibody clone with 84194-6-PBS in a different storage buffer formulation.



1x10⁶ A431 cells were intracellularly stained with 0.25 ug ATAD1 Recombinant antibody (84194-6-RR, Clone:241449D12) and APC-Conjugated Goat Anti-Rabbit IgG(H+L)(red), or 0.25 ug Isotype Control (blue). Cells were fixed with 4% PFA and permeabilized with Flow Cytometry Perm Buffer (PF00011-C). This data was developed using the same antibody clone with 84194-6-PBS in a different storage buffer formulation.



Biolayer interferometry (BLI) kinetic assays of 84194-6-RR against Human ATAD1 were performed. The affinity constant is 0.573 nM.