

For Research Use Only

# LIMPII Recombinant antibody, PBS Only (Capture)

Catalog Number: 84193-4-PBS

Featured Product



## Basic Information

**Catalog Number:**

84193-4-PBS

**Size:**

100ug, Concentration: 1 mg/ml by Nanodrop;

**Source:**

Rabbit

**Isotype:**

IgG

**Immunogen Catalog Number:**

AG25908

**GenBank Accession Number:**

BC021892

**GeneID (NCBI):**

950

**UNIPROT ID:**

Q14108

**Full Name:**

scavenger receptor class B, member 2

**Calculated MW:**

478 aa, 54 kDa

**Observed MW:**

75 kDa

**Purification Method:**

Protein A purification

**CloneNo.:**

241468F9

## Applications

**Tested Applications:**

WB, Sandwich ELISA, Indirect ELISA, Sample test

**Species Specificity:**

human

## Product Information

84193-4-PBS targets LIMPII as part of a matched antibody pair:

MP01086-4: 84193-4-PBS capture and 84193-3-PBS detection (validated in Sandwich ELISA)

Unconjugated rabbit recombinant monoclonal antibody in PBS only (BSA and azide free) storage buffer at a concentration of 1 mg/mL, ready for conjugation. Created using Proteintech's proprietary in-house recombinant technology. Recombinant production enables unrivalled batch-to-batch consistency, easy scale-up, and future security of supply.

This conjugation ready format makes antibodies ideal for use in many applications including: ELISAs, multiplex assays requiring matched pairs, mass cytometry, and multiplex imaging applications. Antibody use should be optimized by the end user for each application and assay.

## Storage

**Storage:**

Store at -80°C.

**Storage Buffer:**

PBS Only

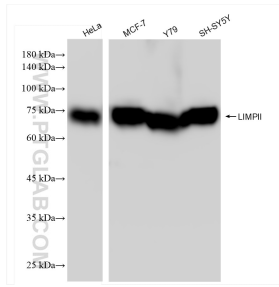
For technical support and original validation data for this product please contact:

T: 1 (888) 4PTGLAB (1-888-478-4522) (toll free in USA), or 1(312) 455-8498 (outside USA)

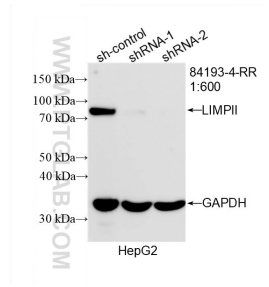
E: [proteintech@ptglab.com](mailto:proteintech@ptglab.com)  
W: [ptglab.com](http://ptglab.com)

**This product is exclusively available under Proteintech Group brand and is not available to purchase from any other manufacturer.**

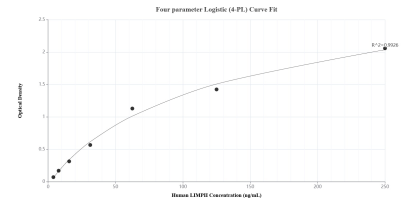
## Selected Validation Data



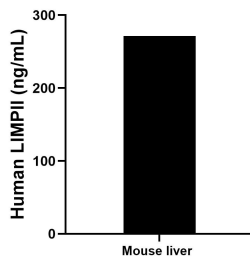
Various lysates were subjected to SDS PAGE followed by western blot with 84193-4-RR (LIMPII antibody) at dilution of 1:5000 incubated at room temperature for 1.5 hours. This data was developed using the same antibody clone with 84193-4-PBS in a different storage buffer formulation.



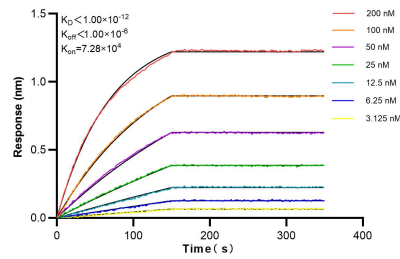
WB result of LIMPII antibody (84193-4-RR; 1:600; incubated at room temperature for 1.5 hours) with sh-Control and sh-LIMPII transfected HepG2 cells. This data was developed using the same antibody clone with 84193-4-PBS in a different storage buffer formulation.



Sandwich ELISA standard curve of MP01086-4, Human LIMPII Recombinant Matched Antibody Pair - PBS only. 84193-4-PBS was coated to a plate as the capture antibody and incubated with serial dilutions of standard Ag25908. 84193-3-PBS was HRP conjugated as the detection antibody. Range: 3.91-250 ng/mL.



The mean LIMPII concentration was determined to be 271.42 ng/mL in mouse liver cell extract based on a 3.70 mg/mL extract load.



Biolayer interferometry (BLI) kinetic assays of 84193-4-RR against Human LIMPII were performed. The affinity constant is below 1 pM.