

For Research Use Only

CD48 Recombinant antibody, PBS Only (Capture)

Catalog Number: 84186-4-PBS



Basic Information

Catalog Number: 84186-4-PBS	GenBank Accession Number: BC016182	Purification Method: Protein A purification
Size: 100ug, Concentration: 1 mg/ml by Nanodrop;	GeneID (NCBI): 962	CloneNo.: 241389F8
Source: Rabbit	UNIPROT ID: P09326	
Isotype: IgG	Full Name: CD48 molecule	
	Calculated MW: 43 kDa	

Applications

Tested Applications:
Cytometric bead array, Sandwich ELISA, Indirect ELISA,
Sample test

Species Specificity:
human

Product Information

84186-4-PBS targets CD48 as part of a matched antibody pair:

MP01093-1: 84186-4-PBS capture and 84186-2-PBS detection (validated in Cytometric bead array)

MP01093-2: 84186-4-PBS capture and 84186-3-PBS detection (validated in Cytometric bead array, Sandwich ELISA)

Unconjugated rabbit recombinant monoclonal antibody in PBS only (BSA and azide free) storage buffer at a concentration of 1 mg/mL, ready for conjugation. Created using Proteintech's proprietary in-house recombinant technology. Recombinant production enables unrivalled batch-to-batch consistency, easy scale-up, and future security of supply.

This conjugation ready format makes antibodies ideal for use in many applications including: ELISAs, multiplex assays requiring matched pairs, mass cytometry, and multiplex imaging applications. Antibody use should be optimized by the end user for each application and assay.

Storage

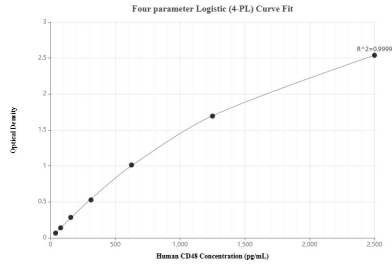
Storage:
Store at -80°C.

Storage Buffer:
PBS Only

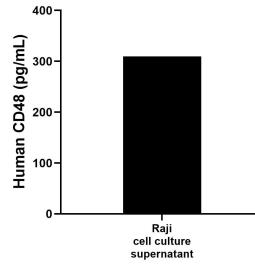
For technical support and original validation data for this product please contact:
T: 1 (888) 4PTGLAB (1-888-478-4522) (toll free in USA), or 1(312) 455-8498 (outside USA) E: proteintech@ptglab.com
W: ptglab.com

This product is exclusively available under Proteintech Group brand and is not available to purchase from any other manufacturer.

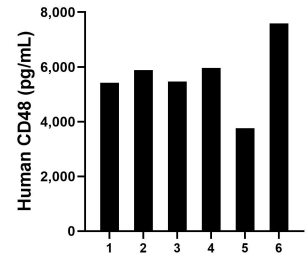
Selected Validation Data



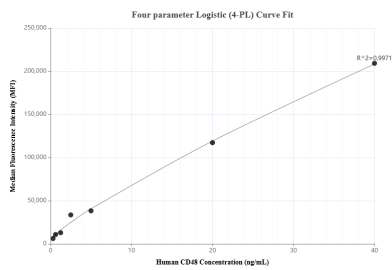
Sandwich ELISA standard curve of MP01093-2, Human CD48 Recombinant Matched Antibody Pair - PBS only. 84186-4-PBS was coated to a plate as the capture antibody and incubated with serial dilutions of standard Eg1005. 84186-3-PBS was HRP conjugated as the detection antibody. Range: 39.1-2500 pg/mL



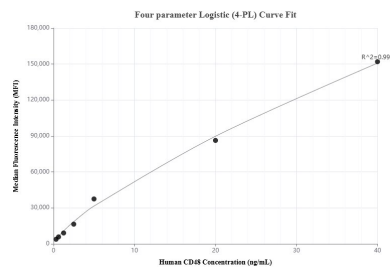
Raji cells (5×10^6 cells/mL) were cultured in RPMI supplemented with 10% fetal bovine serum, 2 mM L-glutamine, 100 U/mL penicillin, and 100 µg/mL streptomycin sulfate. An aliquot of the cell culture supernate was removed, assayed for human CD48, and measured 309.5 pg/mL.



Serum of six individual healthy human donors was measured. The human CD48 concentration of detected samples was determined to be 5680.6 pg/mL with a range of 3761.2 - 7588.7 pg/mL.



Cytometric bead array standard curve of MP01093-1, CD48 Recombinant Matched Antibody Pair, PBS Only. Capture antibody: 84186-4-PBS. Detection antibody: 84186-2-PBS. Standard: Eg1005. Range: 0.313-40 ng/mL



Cytometric bead array standard curve of MP01093-2, CD48 Recombinant Matched Antibody Pair, PBS Only. Capture antibody: 84186-4-PBS. Detection antibody: 84186-3-PBS. Standard: Eg1005. Range: 0.313-40 ng/mL