

For Research Use Only

MED6 Recombinant antibody, PBS Only

Catalog Number: 84184-5-PBS



Basic Information

Catalog Number: 84184-5-PBS	GenBank Accession Number: BC004106	Purification Method: Protein A purification
Size: 100ug, Concentration: 1 mg/ml by Nanodrop;	GeneID (NCBI): 10001	CloneNo.: 241382B2
Source: Rabbit	UNIPROT ID: O75586	
Isotype: IgG	Full Name: mediator complex subunit 6	
Immunogen Catalog Number: AG7541	Calculated MW: 28 kDa	

Applications

Tested Applications:
IF/ICC, Indirect ELISA

Species Specificity:
human

Background Information

MED6 is a part of mediator complex. Mediator functions as a bridge to convey information from gene-specific regulatory proteins to the basal RNA polymerase II transcription machinery. Mediator is recruited to promoters by direct interactions with regulatory proteins and serves as a scaffold for the assembly of a functional preinitiation complex with RNA polymerase II and the general transcription factors.

Storage

Storage:
Store at -80°C.

Storage Buffer:
PBS Only

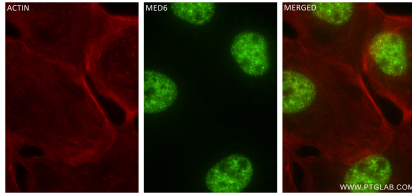
For technical support and original validation data for this product please contact:

T: 1 (888) 4PTGLAB (1-888-478-4522) (toll free in USA), or 1(312) 455-8498 (outside USA)

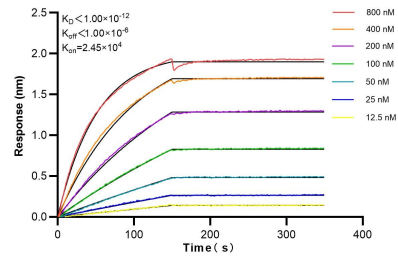
E: proteintech@ptglab.com
W: ptglab.com

This product is exclusively available under Proteintech Group brand and is not available to purchase from any other manufacturer.

Selected Validation Data



Immunofluorescent analysis of (4% PFA) fixed A431 cells using MED6 antibody (84184-5-RR, Clone: 241382B2) at dilution of 1:400 and CoraLite®488-Conjugated Goat Anti-Rabbit IgG(H+L) (SA00013-2), CL594-Phalloidin (red). This data was developed using the same antibody clone with 84184-5-PBS in a different storage buffer formulation.



Biolayer interferometry (BLI) kinetic assays of 84184-5-RR against Human MED6 were performed. The affinity constant is below 1 pM.