

For Research Use Only

MED6 Recombinant antibody, PBS Only (Detector)

Catalog Number: 84184-2-PBS



Basic Information

Catalog Number: 84184-2-PBS	GenBank Accession Number: BC004106	Purification Method: Protein A purification
Size: 100ug, Concentration: 1 mg/ml by Nanodrop;	GeneID (NCBI): 10001	CloneNo.: 241382E3
Source: Rabbit	UNIPROT ID: O75586	
Isotype: IgG	Full Name: mediator complex subunit 6	
Immunogen Catalog Number: AG7541	Calculated MW: 28 kDa	

Applications

Tested Applications:
Cytometric bead array, Sandwich ELISA, Indirect ELISA,
Sample test

Species Specificity:
human

Product Information

84184-2-PBS targets MED6 as part of a matched antibody pair:

MP01087-1: 84184-1-PBS capture and 84184-2-PBS detection (validated in Cytometric bead array)

MP01087-3: 84184-4-PBS capture and 84184-2-PBS detection (validated in Cytometric bead array, Sandwich ELISA)

Unconjugated rabbit recombinant monoclonal antibody in PBS only (BSA and azide free) storage buffer at a concentration of 1 mg/mL, ready for conjugation. Created using Proteintech's proprietary in-house recombinant technology. Recombinant production enables unrivalled batch-to-batch consistency, easy scale-up, and future security of supply.

This conjugation ready format makes antibodies ideal for use in many applications including: ELISAs, multiplex assays requiring matched pairs, mass cytometry, and multiplex imaging applications. Antibody use should be optimized by the end user for each application and assay.

Storage

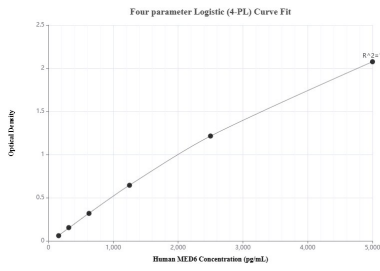
Storage:
Store at -80°C.

Storage Buffer:
PBS Only

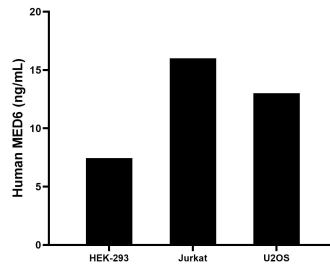
For technical support and original validation data for this product please contact:
T: 1 (888) 4PTGLAB (1-888-478-4522) (toll free in USA), or 1(312) 455-8498 (outside USA) E: proteintech@ptglab.com
W: ptglab.com

This product is exclusively available under Proteintech Group brand and is not available to purchase from any other manufacturer.

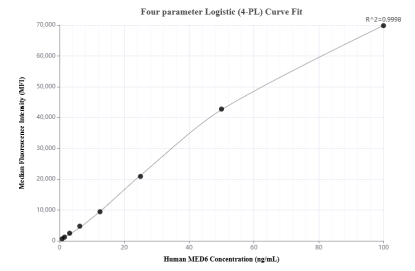
Selected Validation Data



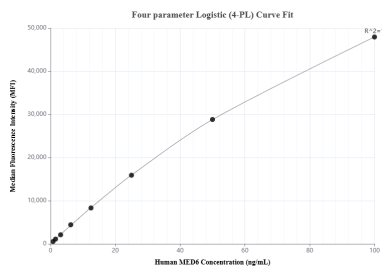
Sandwich ELISA standard curve of MP01087-3, Human MED6 Recombinant Matched Antibody Pair - PBS only. 84184-4-PBS was coated to a plate as the capture antibody and incubated with serial dilutions of standard Ag7541. 84184-2-PBS was HRP conjugated as the detection antibody. Range: 156-5000 pg/mL



The mean MED6 concentration was determined to be 7.45 ng/mL in HEK-293 cell extract based on a 1.5 mg/mL extract load, 16.00 ng/mL in Jurkat cell extract based on a 1.5 mg/mL extract load and 13.01 ng/mL in U2OS cell extract based on a 3.1 mg/mL extract load.



Cytometric bead array standard curve of MP01087-1, MED6 Recombinant Matched Antibody Pair, PBS Only. Capture antibody: 84184-1-PBS. Detection antibody: 84184-2-PBS. Standard: Ag7541. Range: 0.781-100 ng/mL



Cytometric bead array standard curve of MP01087-3, MED6 Recombinant Matched Antibody Pair, PBS Only. Capture antibody: 84184-4-PBS. Detection antibody: 84184-2-PBS. Standard: Ag7541. Range: 0.781-100 ng/mL