

For Research Use Only

Neprilysin/CD10 Recombinant antibody

Catalog Number: 84181-1-RR



Basic Information

Catalog Number: 84181-1-RR	GenBank Accession Number: BC101658	Purification Method: Protein A purification
Size: 100ul , Concentration: 1000 µg/ml by Nanodrop;	GeneID (NCBI): 4311	CloneNo.: 241322A8
Source: Rabbit	UNIPROT ID: P08473	Recommended Dilutions: WB 1:5000-1:50000 IHC 1:500-1:2000 IF-P 1:200-1:800
Isotype: IgG	Full Name: membrane metallo-endoropeptidase	
	Calculated MW: 750 aa, 86 kDa	
	Observed MW: 100 kDa	

Applications

Tested Applications:

WB, IHC, IF-P, ELISA

Species Specificity:

human, mouse, rat

Note-IHC: suggested antigen retrieval with TE buffer pH 9.0; (*) Alternatively, antigen retrieval may be performed with citrate buffer pH 6.0

Positive Controls:

WB : mouse kidney tissue, Raji cells, rat kidney tissue

IHC : human tonsillitis tissue,

IF-P : mouse kidney tissue,

Background Information

CD10, also known as neprilysin, membrane metallo-endoropeptidase (MME), neutral endopeptidase (NEP), or common acute lymphoblastic leukemia antigen (CALLA), is a 100-kDa type II transmembrane glycoprotein belonging to peptidase M13 family (PMID: 7760013; 8102558). Among hematopoietic cells, CD10 is expressed on granulocytes, B cell precursors, mature germinal center B cells, a subset of immature thymocytes (PMID: 13679451). CD10 is also expressed on a variety of nonhematopoietic cell types, including bronchial epithelial cells, cultured fibroblasts, bone marrow stromal cells, renal proximal tubular epithelial cells, breast myoepithelium, biliary canaliculi (PMID: 8102558). CD10 is a cell surface peptidase that cleaves peptide bonds on the amino side of hydrophobic amino acids and inactivates a variety of physiologically active peptides. Loss or decreases in CD10 expression have been reported in a variety of malignancies (PMID: 16054017).

Storage

Storage:

Store at -20°C. Stable for one year after shipment.

Storage Buffer:

PBS with 0.02% sodium azide and 50% glycerol pH 7.3.

Aliquoting is unnecessary for -20°C storage

*** 20ul sizes contain 0.1% BSA

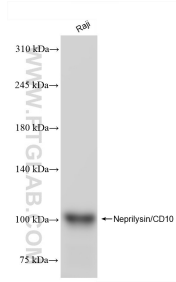
For technical support and original validation data for this product please contact:

T: 1 (888) 4PTGLAB (1-888-478-4522) (toll free
in USA), or 1(312) 455-8498 (outside USA)

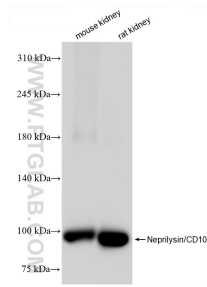
E: proteintech@ptglab.com
W: ptglab.com

This product is exclusively available under Proteintech Group brand and is not available to purchase from any other manufacturer.

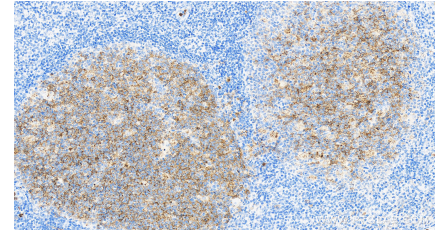
Selected Validation Data



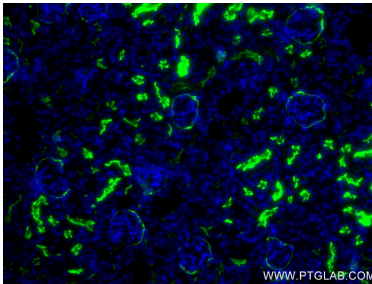
Raji cells were subjected to SDS PAGE followed by western blot with 84181-1-RR (Neprilysin/CD10 antibody) at dilution of 1:10000 incubated at room temperature for 1.5 hours.



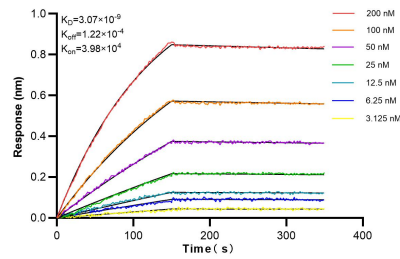
Various lysates were subjected to SDS PAGE followed by western blot with 84181-1-RR (Neprilysin/CD10 antibody) at dilution of 1:10000 incubated at room temperature for 1.5 hours.



Immunohistochemical analysis of paraffin-embedded human tonsillitis tissue slide using 84181-1-RR (Neprilysin/CD10 antibody) at dilution of 1:1000 (under 40x lens). Heat mediated antigen retrieval with Tris-EDTA buffer (pH 9.0).



Immunofluorescent analysis of (4% PFA) fixed mouse kidney tissue using Neprilysin/CD10 antibody (84181-1-RR, Clone: 241322A8) at dilution of 1:400 and Coralite® 488-Conjugated Goat Anti-Rabbit IgG(H+L) (SA00013-2).



Biolayer interferometry (BLI) kinetic assays of 84181-1-RR against Human Neprilysin/CD10 were performed. The affinity constant is 3.07 nM.