

For Research Use Only

EPS15 Recombinant antibody

Catalog Number: 84179-1-RR



Basic Information

Catalog Number:

84179-1-RR

Size:

100ul, Concentration: 1000 µg/ml by Nanodrop;

Source:

Rabbit

Isotype:

IgG

Immunogen Catalog Number:

AG35282

GenBank Accession Number:

NM_001981.3

GeneID (NCBI):

2060

UNIPROT ID:

P42566

Full Name:

epidermal growth factor receptor pathway substrate 15

Calculated MW:

99 kDa

Observed MW:

140 kDa

Purification Method:

Protein A purification

CloneNo.:

241485B7

Recommended Dilutions:

WB 1:5000-1:50000

Applications

Tested Applications:

WB, ELISA

Species Specificity:

human

Positive Controls:

WB : HeLa cells, MCF-7 cells, A431 cells, Jurkat cells

Background Information

EPS15 was originally identified as a substrate for the kinase activity of the epidermal growth factor receptor (EGFR). EPS15 has a tripartite structure comprising an NH2-terminal portion, which contains three EH domains, a central putative coiled-coil region, and a COOH-terminal domain containing multiple copies of the amino acid triplet Aspartate-Proline-Phenylalanine (PMID: 10481267). EPS15 is phosphorylated on tyrosine residues following EGFR activation (PMID: 7689153).

Storage

Storage:

Store at -20°C. Stable for one year after shipment.

Storage Buffer:

PBS with 0.02% sodium azide and 50% glycerol pH 7.3.

Aliquoting is unnecessary for -20°C storage

*** 20ul sizes contain 0.1% BSA

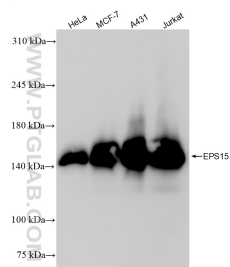
For technical support and original validation data for this product please contact:

T: 1 (888) 4PTGLAB (1-888-478-4522) (toll free in USA), or 1(312) 455-8498 (outside USA)

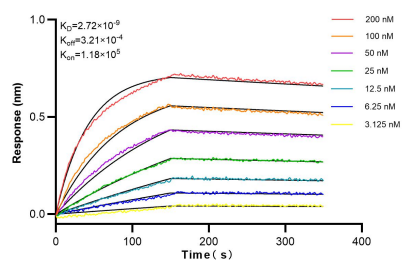
E: proteintech@ptglab.com
W: ptglab.com

This product is exclusively available under Proteintech Group brand and is not available to purchase from any other manufacturer.

Selected Validation Data



Various lysates were subjected to SDS PAGE followed by western blot with 84179-1-RR (EPS15 antibody) at dilution of 1:20000 incubated at room temperature for 1.5 hours.



Biolayer interferometry (BLI) kinetic assays of 84179-1-RR against Human EPS15 were performed. The affinity constant is 2.72 nM.