

For Research Use Only

EPS15 Recombinant antibody, PBS Only (Capture)

Catalog Number: 84179-1-PBS



Basic Information

Catalog Number: 84179-1-PBS	GenBank Accession Number: NM_001981.3	Purification Method: Protein A purification
Size: 100ug , Concentration: 1 mg/ml by Nanodrop;	GeneID (NCBI): 2060	CloneNo.: 241485B7
Source: Rabbit	UNIPROT ID: P42566	
Isotype: IgG	Full Name: epidermal growth factor receptor pathway substrate 15	
Immunogen Catalog Number: AG35282	Calculated MW: 99 kDa	
	Observed MW: 140 kDa	

Applications

Tested Applications:
WB, Cytometric bead array, Indirect ELISA

Species Specificity:
human

Product Information

84179-1-PBS targets EPS15 as part of a matched antibody pair:

MP01095-1: 84179-1-PBS capture and 84179-4-PBS detection (validated in Cytometric bead array)

Unconjugated rabbit recombinant monoclonal antibody in PBS only (BSA and azide free) storage buffer at a concentration of 1 mg/mL, ready for conjugation. Created using Proteintech's proprietary in-house recombinant technology. Recombinant production enables unrivalled batch-to-batch consistency, easy scale-up, and future security of supply.

This conjugation ready format makes antibodies ideal for use in many applications including: ELISAs, multiplex assays requiring matched pairs, mass cytometry, and multiplex imaging applications. Antibody use should be optimized by the end user for each application and assay.

Background Information

EPS15 was originally identified as a substrate for the kinase activity of the epidermal growth factor receptor (EGFR). EPS15 has a tripartite structure comprising an NH2-terminal portion, which contains three EH domains, a central putative coiled-coil region, and a COOH-terminal domain containing multiple copies of the amino acid triplet Aspartate-Proline-Phenylalanine (PMID: 10481267). EPS15 is phosphorylated on tyrosine residues following EGFR activation (PMID: 7689153).

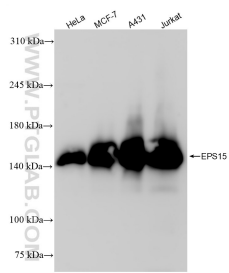
Storage

Storage:
Store at -80°C.
Storage Buffer:
PBS Only

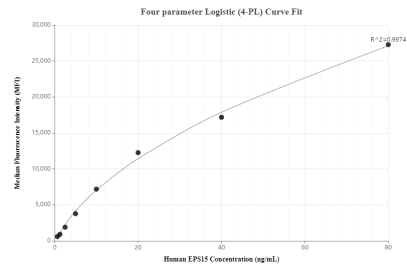
For technical support and original validation data for this product please contact:
T: 1 (888) 4PTGLAB (1-888-478-4522) (toll free in USA), or 1(312) 455-8498 (outside USA)
E: proteintech@ptglab.com
W: ptglab.com

This product is exclusively available under Proteintech Group brand and is not available to purchase from any other manufacturer.

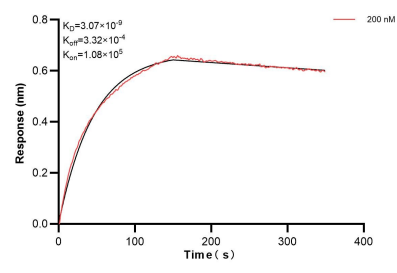
Selected Validation Data



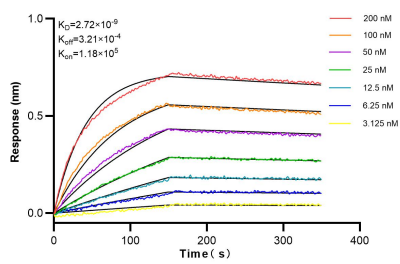
Various lysates were subjected to SDS PAGE followed by western blot with 84179-1-RR (EPS15 antibody) at dilution of 1:20000 incubated at room temperature for 1.5 hours. This data was developed using the same antibody clone with 84179-1-PBS in a different storage buffer formulation.



Cytometric bead array standard curve of MP01095-1, EPS15 Recombinant Matched Antibody Pair, PBS Only. Capture antibody: 84179-1-PBS. Detection antibody: 84179-4-PBS. Standard: Ag35282. Range: 0.625-80 ng/mL.



Biolayer interferometry (BLI) kinetic assay of 84179-1-PBS against Human EPS15 was performed. The affinity constant is 3.07 nM.



Biolayer interferometry (BLI) kinetic assays of 84179-1-RR against Human EPS15 were performed. The affinity constant is 2.72 nM.