

For Research Use Only

SLC7A5 Recombinant antibody, PBS Only (Capture)

Catalog Number: 84178-1-PBS



Basic Information

Catalog Number: 84178-1-PBS	GenBank Accession Number: BC039692	Purification Method: Protein A purification
Size: 100ug, Concentration: 1 mg/ml by Nanodrop;	GeneID (NCBI): 8140	CloneNo.: 241476A1
Source: Rabbit	UNIPROT ID: Q01650	
Isotype: IgG	Full Name: solute carrier family 7 (cationic amino acid transporter, y+ system), member 5	
Immunogen Catalog Number: AG29164	Calculated MW: 507 aa, 55 kDa	

Applications

Tested Applications:
Cytometric bead array, Sandwich ELISA, Indirect ELISA, Sample test

Species Specificity:
human

Product Information

84178-1-PBS targets SLC7A5 as part of a matched antibody pair:

MP01094-1: 84178-1-PBS capture and 84178-3-PBS detection (validated in Cytometric bead array)

MP01094-2: 84178-1-PBS capture and 84178-4-PBS detection (validated in Cytometric bead array, Sandwich ELISA)

Unconjugated rabbit recombinant monoclonal antibody in PBS only (BSA and azide free) storage buffer at a concentration of 1 mg/mL, ready for conjugation. Created using Proteintech's proprietary in-house recombinant technology. Recombinant production enables unrivalled batch-to-batch consistency, easy scale-up, and future security of supply.

This conjugation ready format makes antibodies ideal for use in many applications including: ELISAs, multiplex assays requiring matched pairs, mass cytometry, and multiplex imaging applications. Antibody use should be optimized by the end user for each application and assay.

Storage

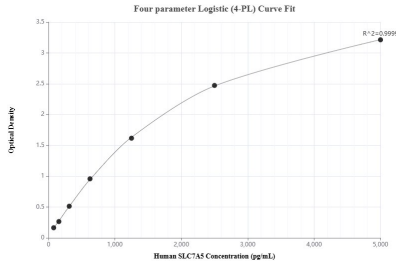
Storage:
Store at -80°C.

Storage Buffer:
PBS Only

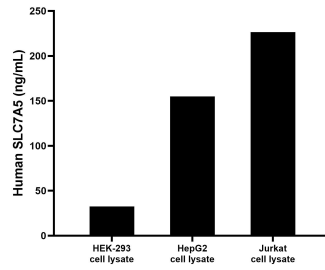
For technical support and original validation data for this product please contact:
T: 1 (888) 4PTGLAB (1-888-478-4522) (toll free in USA), or 1(312) 455-8498 (outside USA) E: proteintech@ptglab.com
W: ptglab.com

This product is exclusively available under Proteintech Group brand and is not available to purchase from any other manufacturer.

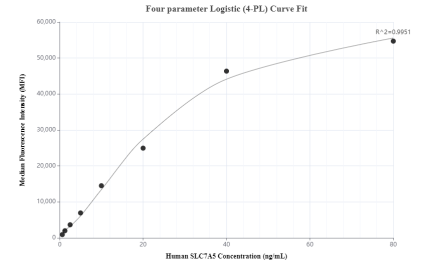
Selected Validation Data



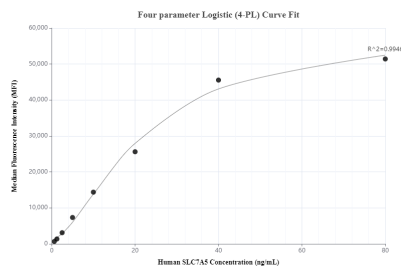
Sandwich ELISA standard curve of MP01094-2, Human SLC7A5 Recombinant Matched Antibody Pair - PBS only. 84178-1-PBS was coated to a plate as the capture antibody and incubated with serial dilutions of standard Ag29164. 84178-4-PBS was HRP conjugated as the detection antibody. Range: 78.1-5000 pg/mL



HEK-293, HepG2 and Jurkat cell lysates were measured. The human SLC7A5 concentration of detected samples was determined to be 32.56 ng/mL (based on a 2.0 mg/mL extract load) in HEK-293 cell lysate, 154.94 ng/mL (based on a 2.0 mg/mL extract load) in HepG2 cell lysate and 226.39 ng/mL (based on a 2.3 mg/mL extract load) in Jurkat cell lysate.



Cytometric bead array standard curve of MP01094-1, SLC7A5 Recombinant Matched Antibody Pair, PBS Only. Capture antibody: 84178-1-PBS. Detection antibody: 84178-3-PBS. Standard: Ag29164. Range: 0.625-80 ng/mL



Cytometric bead array standard curve of MP01094-2, SLC7A5 Recombinant Matched Antibody Pair, PBS Only. Capture antibody: 84178-1-PBS. Detection antibody: 84178-4-PBS. Standard: Ag29164. Range: 0.625-80 ng/mL